

**SANY**

Quality Changes the World

BAUMA2022



**KEEP ON  
GROWING  
WITH A  
STRONG  
PARTNER**

CONSTRUCTION AND PORT MACHINERY FROM SANY

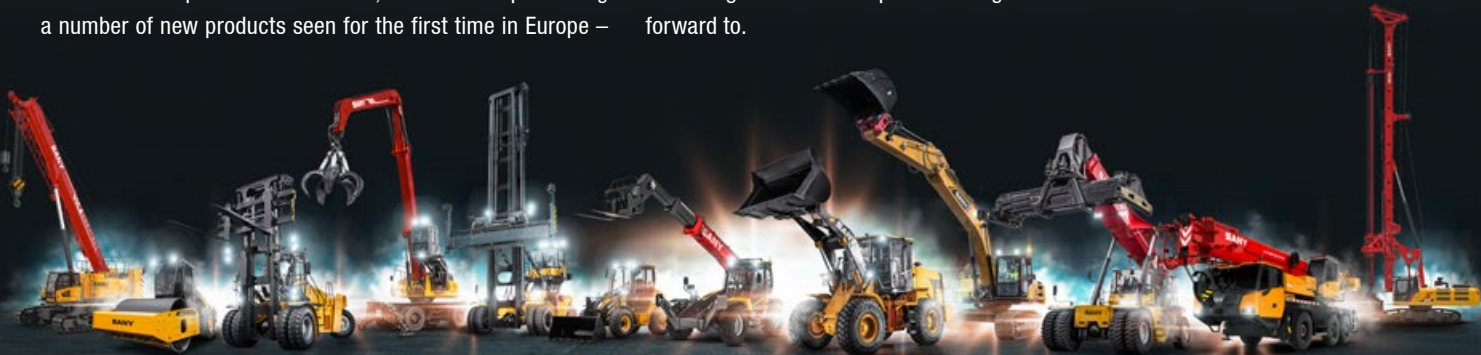
BAUMA 2022

## SANY AT BAUMA 2022

### AN EXTENSIVE RANGE WITH MANY HIGHLIGHTS

In Munich, SANY will be showcasing its full product range available in Europe. It will focus on the comprehensive range of construction products. In addition, SANY will be presenting a number of new products seen for the first time in Europe –

including in the areas of mini excavators and wheel loaders. What's more, in the area of telehandlers, we are launching a brand new product range that users can look forward to.



HIGHLIGHT

## WHEEL LOADER SW305 / SW405

The new generation of powerful wheel loaders further expands SANY's wheel loader range. With a robust, heavy-duty frame design and main components from renowned manufacturers, these wheel loaders have been designed for the most demanding operating conditions.

- + Particularly powerful wheel loader
- + Spacious, ROPS-/FOPS-certified cab
- + Hydraulically driven reversible fan
- + Third hydraulic function for proportional control on the joystick





HIGHLIGHT

# MINI EXCAVATOR WITH A FULLY ELECTRIC DRIVE SY19E

The new, two-tonne excavator with a canopy structure is the ideal solution wherever the aim is to eliminate pollution and noise emissions.

- + 30% energy saving
- + 80% maintenance cost saving
- + Zero pollutant emissions
- + LFP battery
- + High resolution 7" touch display
- + Load-sensing hydraulic system

HIGHLIGHT

# TELEHANDLER STH1440 / STH1840

The powerful telehandlers, which have been designed from scratch, set standards in their class with respect to safety, user experience and convenience.

- + Compact, high-performance telehandler
- + Extensive safety equipment
- + Highly manoeuvrable with three different steering modes
- + Robust and extremely durable thanks to solid steel construction
- + Integrated reversing camera and pulse radar as standard



# PORTFOLIO HIGHLIGHTS CONSTRUCTION MACHINERY

## Mini excavator SY18C

Can fit into any space

- + Width-adjustable chassis
- + Proportional auxiliary control circuit via joystick operation as standard
- + LED work lighting
- + Load-sensing hydraulic system



## Mini excavator SY50U

Great performance, small package

- + 2 proportional auxiliary line on joystick as standard
- + Double acting circuit for hydraulic quick coupler with piping
- + Efficient, powerful load-sensing hydraulic system
- + Safety valves on arm and boom



## Mini excavator SY26U

When manoeuvrability matters

- + 2 proportional auxiliary lines with joystick control as standard
- + 8 storable attachments
- + Double acting circuit for hydraulic quick-coupler with piping
- + Safety valves on arm and boom



## Compact excavator SY80U

Efficiency in the smallest of spaces

- + Extremely compact short-tail-swing excavator
- + Comfortable driver's cab
- + Hydraulic pipework for quick coupler attachment
- + 2 proportional auxiliary control circuits on the joystick



## Compact excavator SY155U

Productivity delivered today

- + Compact short-tail-swing machine with reinforced chassis
- + High safety standards including rear camera
- + 2 proportional auxiliary control circuits on the joystick
- + Air-suspension seat

## Crawler excavator SY215C

### Precise power

- + 10" high-resolution touchscreen display
- + 2 cameras as standard
- + Seat with adjustable control panels
- + 5 different attachment devices can be programmed for each category



## Crawler excavator SY305C

### Strong powerful

- + 10" high-resolution touchscreen display
- + 2 cameras as standard
- + Seat with adjustable control panels
- + 5 different attachment devices can be programmed for each category



## Crawler excavator SY500H

### High performance included

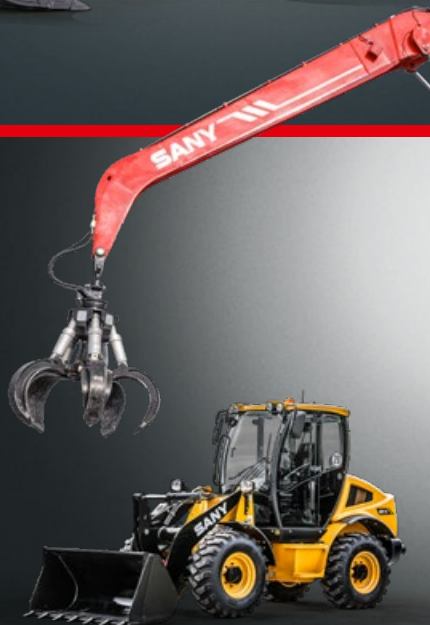
- + Telescopic undercarriage for optimum stability
- + Comfortable driver's cab
- + Total safety package, including camera
- + Standard connections for manufacturer-independent accessories



## Mobile excavator SY155W

### Ready for any terrain

- + Sensitive joystick control
- + Fast and powerful hydraulics
- + Two-piece-boom
- + Camera for good visibility on all sides



## Compact wheel loader SW115

### The reliable all-rounder

- + Comfortable driver's cab
- + Oscillating axle for greater stability
- + High safety standard
- + Extensive standard equipment



## Material handler SMHW48G5

### Simply move more

- + Most powerful engine in its class
- + Extensive safety equipment
- + Particularly maneuverable due to 4-wheel steering

BAUMA 2022

## SANY GLOBAL WITH STRONG PRODUCTS

### Hoisting AT-Crane SAC600E

- + 50 m boom, 16 m jib
- + New generation iCab
- + Wireless remote control
- + EU Stage V
- + 12 t axle load with 4.2 t counterweight
- + Optional anti-electromagnetic interference module



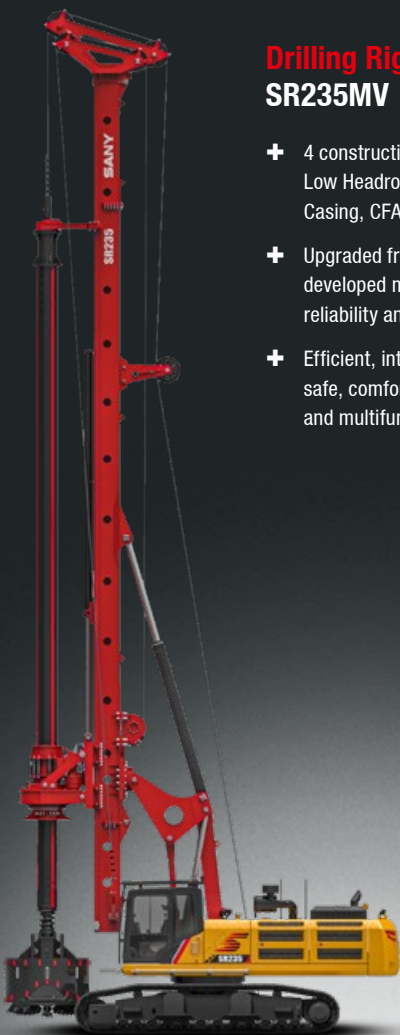
### Hoisting Crawler Crane SCE800TB-EV

- + Max. lifting moment 300 t.m
- + Pure electric, low noise emission, environmentally friendly and energy saving
- + Rear CW self loading and unloading by wireless remote control
- + 282 kWh liquid-cooled power battery, supporting 8h continuous operation
- + Danfoss 260 kW water-cooled permanent magnet synchronous motor
- + Support 240 kW double gun DC charging and 16 A / 32 A / 63 A AC charging modes



### Drilling Rig SR235MV

- + 4 construction methods: Low Headroom, Kelly, Casing, CFA
- + Upgraded from well-developed model, high reliability and good stability
- + Efficient, intelligent, safe, comfortable and multifunctional



### Tandem compactor STR40-C STR30-C STR20-C

- + High frequency dual-vibration modes
- + Optional double handles operation
- + Large volume water/fuel tanks



### Drum soil compactor SSR80-C SSR120-C

- + Dual frequency/Dual vibration modes
- + Air suspension seat plus electronic control handles
- + EU Stage V

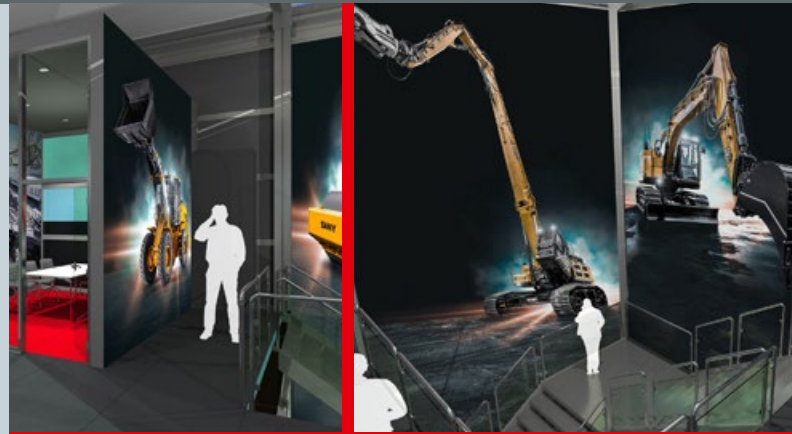


BAUMA 2022

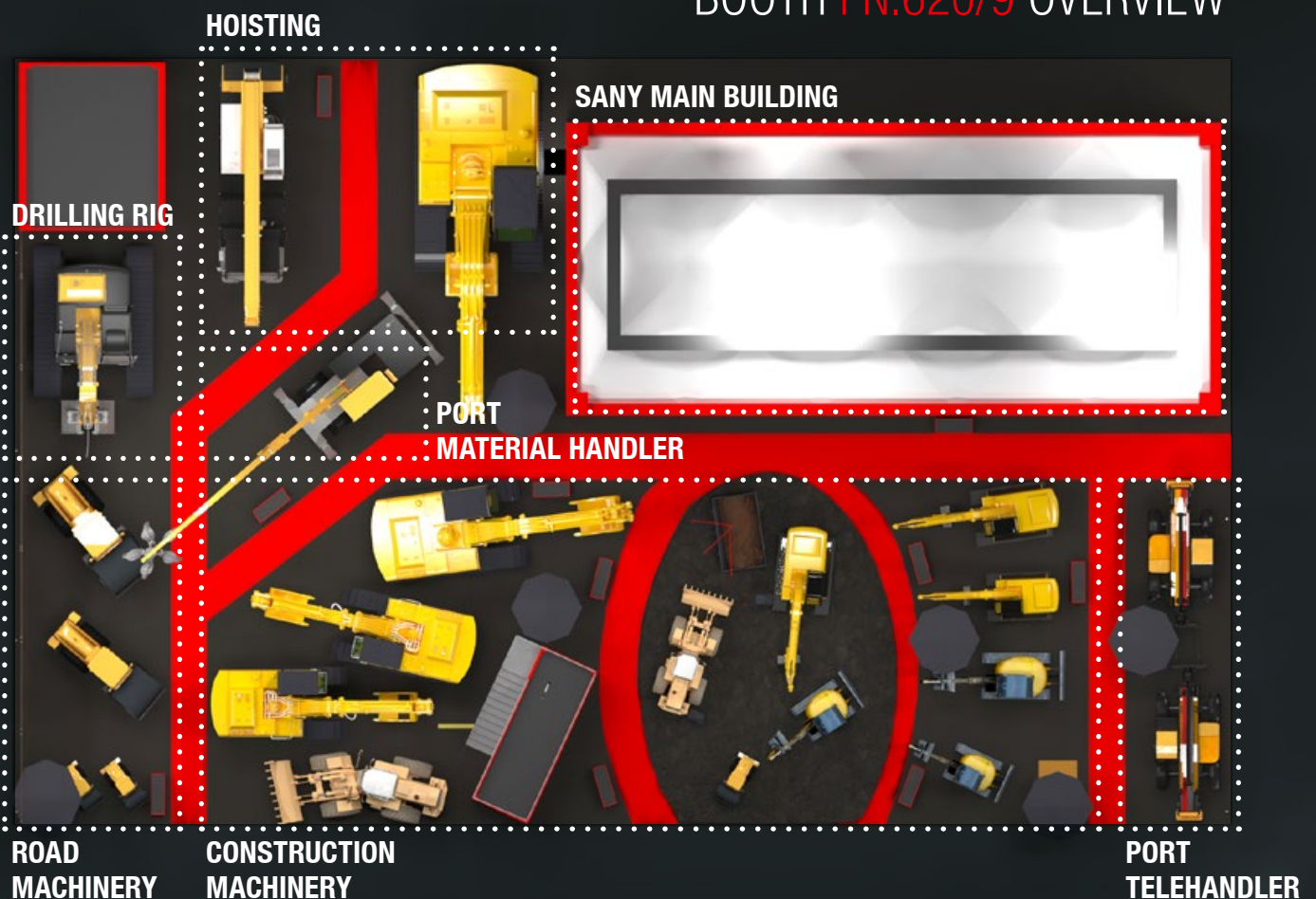
## WELCOME

TO THE CUTTING EDGE OF  
CONSTRUCTION MACHINERY  
TECHNOLOGY

A reliable and capable partner, SANY will be showcasing its particularly comprehensive product range at the world's largest trade fair for construction machinery. With a new and exciting trade fair stand concept, SANY will be inviting the construction industry to get to know the full variety of its products and services. Surrounded by huge construction containers, visitors will feel like they are on a real construction site, with the addition of expert contact partners on hand for advice and answering any questions.



## BOOTH FN.620/9 OVERVIEW



BAUMA 2022

# KEEP ON GROWING WITH A STRONG PARTNER

With powerful machinery, hands-on servicing and high delivery capability, SANY is a reliable partner for construction companies around the world that want to further strengthen their position in the market. Tailor-made products and a very impressive

price-performance ratio give SANY customers attractive options for growth and to expand their range of services. Supported by a global dealer network and with many sites scattered across the globe, SANY is synonymous with quality that changes the world!



# SANY

Quality Changes the World

## SANY EUROPE GmbH

Sany Allee 1  
D-50181 Bedburg  
fon +49 2272 90531 100  
fax +49 2272 90531 109  
info@sanyeurope.com  
www.sanyeurope.com



SANY Industrial Parks



SANY Sales & Service Offices China



Putzmeister



SANY Sales & Service Offices oversea



SANY global coverage