



# SCE1000A-EV

## Crawler Crane

### 100 Tons Lifting Capacity

Quality Changes the World



**Max. lifting moment: 380t · m**  
**Max. boom length: 64m**  
**Max. fixed jib combination: 52m+22.5m**

The parameters, pictures and standard/optional equipment are only for reference in this brochure, the actual machine is based on the effective price list and contract.



**Crawler Crane Series**  
**SCE1000A-EV**

P03

Main  
Characteristics

- Product Specification
- Safety Device

P09

Technical  
Parameters

- Major Performance & Specifications
- Outline Dimension
- Transport Dimension
- Transport Plan

P18

Configurations

- H Configuration
- FJ Configuration
- HC Configuration



**SCE1000A-EV**  
**SANY CRAWLER CRANE**  
**100 TONS LIFTING CAPACITY**

QUALITY CHANGES THE WORLD

## Main Characteristics

- Page 04 Product Specification
- Page 07 Safety Device



## Product Specification



### Power battery

- Cell type: LFP (lithium iron phosphate).
- Battery pack operating voltage: 480-700.8V.
- Rated energy storage: 281.91kWh.
- Max. continuous charging current: Single electric gun: 200A, Dual electric gun: 400A.
- Battery case protection level: IP68.  
Way of battery heat dissipation: Liquid cooling.

### Drive motor

- Model: EM-PMI375-T1100.
- Type: Three-phase AC permanent magnet synchronous motor.
- Rated voltage: 500V AC.
- Average efficiency: 96%.
- Rated power: 206kW.
- Rated speed: 1500rpm.
- Rated torque: 1310N·m.
- Max. power: 336kW.
- Max. speed: 2570rpm.
- Max. torque: 2500N·m.
- Weight: 295kg.
- Max. ambient temperature: 65°C.
- Min. ambient temperature: -40°C.
- Max. inlet temperature: 65°C.
- Cooling system: Water cooling, external switch unit.
- Protection level: IP67.

### Electrical control system

- SANY Developed SYIC-III Integrated Control System.
- Control system consists of power battery system, drive motor system, power supply system and main control system, torque limiter system, auxiliary system and safety monitoring system. The controller, CAN BUS technology is applied between display, power battery system and drive motor system Line data communication.
- Monitor: The working parameters and status are shown on the monitor, such as power battery SOC, power battery voltage, power battery charge and discharge Current, instantaneous power of driving motor, charging mark, lifting weight and boom Angle and other working parameters Number and working status.

### SANY developed SYIC-III integrated control system is adopted with high integration, precise operation and reliable quality

- Power battery system: The main control and she slave control in each battery pack adopt daisy-chain communication to achieve power in real time and efficient battery system data acquisition and control.
- Drive motor system: Vector control is adopted to achieve high precision control of motor output overload, over temperature, short circuit, over voltage protection and other functions.
- Control system: Power battery system, drive motor system, power supply system and main control system, torque limiter system, auxiliary system and safety monitoring system. The controller, CAN bus technology is applied between display, power battery system and drive motor system line data communication.  
Display: Can display power battery SOC, power battery voltage, power battery charge and discharge current, instantaneous power of driving motor, charging mark, lifting weight and boom Angle and other working parameters number and working status.

### Hydraulic system

- Main pumps: Three open variable displacement piston pumps are adopted to provide oil supply for main actuators of machine.
- Gear pump: two types of gear pump for radiator and control circuit.
- Control: Main pump adopts electrically-controlled positive flow control; winch motor adopts limitless adjustable piston motor of variable displacement. The operating components are two cross hydraulic handles, dual one-axis control handle for travel (EU market); or one cross handle plus three one-axis handles, and dual one-axis handles (US and other markets), to control various actuators proportionally.
- Way of cooling: Heat exchanger, plate fan core and multi-stage cooling.
- Filter: Large flow, high precision filter, with bypass valve and transmitter, which can remind the user to replace the filter element in time.
- Max. pressure of system: 32MPa.
- Main/aux. load hoist, boom hoist and travel system: 32MPa.
- Swing system: 32MPa.
- Control system: 5MPa.
- Hydraulic tank capacity: 460L.



## Product Specification

### Main and aux. hoist mechanism

- Main and aux. hoist winches are driven separately by motor via gearbox. Operating winch handle can control the winch to rotate to two directions, which are lifting and lowering of hook. Excellent inching function is equipped on the machine.
- Drums with fold-line grooves can ensure the wire rope reeved in order in multilayers.
- Free fall for main/aux. load hoist is offered as optional.

|                              |                                     |            |
|------------------------------|-------------------------------------|------------|
| Main hoisting mechanism      | Drum diameter                       | 630mm      |
|                              | Rope speed on the first work layer  | 0~121m/min |
|                              | Wire rope diameter                  | 26mm       |
|                              | Wire rope length of main hoist      | 240m       |
|                              | Rated single line pull              | 12t        |
| Auxiliary hoisting mechanism | Drum diameter                       | 630mm      |
|                              | Rope speed on the first work layer  | 0~121m/min |
|                              | Wire rope diameter                  | 26mm       |
|                              | Wire rope length of auxiliary hoist | 180m       |
|                              | Rated single line pull              | 12t        |

### Boom hoist mechanism

- Boom hoist winch is driven separately by motor via gearbox. Operating handle can control the winch to rotate to two directions, which are lifting and lowering of boom.
- Drums with fold-line grooves can ensure the wire rope reeved in order in multilayers.

|                      |                                    |           |
|----------------------|------------------------------------|-----------|
| Boom hoist mechanism | Drum diameter                      | 420mm     |
|                      | Rope speed on the first work layer | 0~59m/min |
|                      | Wire rope diameter                 | 20mm      |
|                      | Wire rope length of boom hoist     | 140m      |
|                      | Rated single line pull             | 7t        |

### Optional 3rd winch mechanism

- Optional 3rd winch mechanism is connected with boom base with pins and driven separately by motor via gearbox. Operating handle can control the winch to rotate to two directions, which are lifting and lowering of hook.
- Drums with fold-line grooves can ensure the wire rope reeved in order in multilayers.

|                              |  |            |
|------------------------------|--|------------|
| Optional 3rd winch mechanism | Drum diameter                          | 522mm      |
|                              | Rope speed on the outermost work layer | 0~100m/min |
|                              | Wire rope diameter                     | 22mm       |
|                              | Wire rope length                       | 130m       |
|                              | Rated single line pull                 | 9t         |

### Swing mechanism

- Swing brake adopts wet, spring loaded, normally-closed brake, and braking through spring force.
- Swing system has three work modes to accommodate different needs. It is featured in small backlash, steady control, and excellent inching function. It also has free slipping function and swing control on slope to provide smoother braking.
- Swing drive: Internal engaged swing drive with 360° swing range, and the max. swing speed is 2.7r/min. The max. drive pressure can reach 32MPa.
- Swing lock: Cylinder lock can ensure the upperworks locked securely on four directions after work or during transport; Swing ring: single row ball bearing.

### Cab and control

- Novel operator's cab with fashionable profile, nice interior and large window glass. There are low and high-beam lights, back-view mirror, heater and A/C, radio and other functions. The layout of seat, handles, control buttons are designed with ergonomic principles to make operation more comfortable.
- Cab layout: Integrated 10.4-inch touch screen, programmable smart switches, and man-machine interaction interface are more improved.
- Armrest box: On the left and right armrest box are control handles, electrical switches, emergent stop and ignition switch. The armrest box can be adjusted along with the seat.
- Seat: Multi-way and multi-level floating adjustable seat with unload switch.
- A/C: Cool and heat air; optimized air channels and vents.
- Multiple cameras can present on the monitor at the same time to realize backing video, real-time monitoring of wire rope on each winch, conditions behind the counterweight and surrounding the machine.

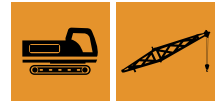
### Counterweight

- Counterweight tray and blocks are piled up for easier assembly and transport.
- Standard self-assembly rear counterweight 28.6t.
- Tray 8.8t×1, counterweight block 3.3t×6.
- Carbody counterweight: 5.5t×2 at the front and rear of carbody.

### Upperworks

- High-strength steel weld framework. The parts are laid out in the way that is easier for maintenance and service.

## Product Specification



### Lowerworks

- Independent travel driving units are adopted for each side of the crawler, to realize straight walking and turning driven by travel motor through gearbox and drive wheel.

### Crawler extension and retraction

- The crawlers can extend and retract via cylinders. During work mode, the crawlers must be extended, and retracted during transport with crawlers on when there is no restrictions.

### Crawler tensioning

- Use the jack to push the guide wheel and insert the shim to adjust crawler tension.

### Track pad

- High-strength alloy cast steel track pad can prolong the service life. They are 850mm wide, and the total amount is 62pcs×2.

### Jack cylinder

- Jack cylinders are provided as standard offering to make jobsite transfer easier.

### Self-assembly cylinder

- Self-assembly cylinder is provided as standard offering to help crawlers and carbody counterweight assembly during jobsite transfer.

### Operating equipment

- All chords are high-strength steel tubes, and the boom/jib top sheaves are made of high-strength anti-wearing Nylon material protecting wire rope. The hooks are installed with rolled welded steel sheave. Pendant cables with quick hitch connector that are easy to assemble are adopted.

### Boom

- Lattice structure. The chord adopts high-strength structural tube and each section is connected through pins.
- Basic boom: 6.5m boom top + 6.5m boom base.
- Boom insert: 3m×1, 6m×2, 9m×4.
- Boom length: 13m~64m.

### Fixed jib

- Lattice structure. The chord adopts high-strength structural tube and each section is connected through pins.
- Basic boom: 4.5m boom top + 4.5m boom base.
- Boom insert: 4.5m×3.
- Boom length: 9m~22.5m.
- Longest boom + jib: 52m boom +22.5m jib.

### Extension jib

- The extension jib is a welded structure connected to the boom tip by pins, used for auxiliary hook.
- Extension jib length: 1.66m.

### Hook block

- 100t hook block, five sheaves.
- 50t hook block, three sheaves.
- 25t hook block, one sheave.
- 13.5t ball hook.

## Safety Device



### Assembly mode/work mode switch

- In assembly mode, some safety devices are disabled for crane assembly.
- In work mode, all safety devices activate to protect the operation.

### Emergent stop

- In emergent situation, this button is pressed down to cut off the power supply of whole machine and all actions stop.

### Load limit indicator (LMI)

- It is an independent computerized safety control system. LMI can automatically detect the load weight, work radius and boom angle, and present on the display the rated load, actual load, work radius and boom angle. In normal operation, the LMI can make a judgment and cut off automatically if the crane moves towards dangerous direction. It can also perform as a black box to record the lifting information.
- Composition: Monitor, angler sensor, force sensor and other electrical components.

### Over-hoist protection of the main/auxiliary hooks

- Over-hoist protection device comprises of limit switch and weight on boom top, which prevents the hook lift up too much. When the hook lifts up to the limit height, the limit switch activates, buzzer on the left control panel sends alarm, and failure indicator light starts to flash, the hook hoisting action is cut off automatically.

### Over-release protection device of the main /auxiliary winch

- It is comprised of activator in the drum and proximity switch to prevent over release of wire rope. When the rope is paid out close to the last three wraps, the limit switch acts, and the system sends alarm through buzzer and show the alarm on the instrument panel, automatically cutting off the winch action.

### Function lock

- If the function lock level is not in work position, all the other handles won't work, which prevents any mis-operation caused by accidental collision.

### Drum lock

- Hydraulically controlled lock is installed for boom hoist drum, which needs to unlock by switch before operation, in order to prevent mis-operation of handles and ensure safety during non-work time.

### Swing lock

- Swing Lock can lock the machine at four positions, front and back, left and right.

### Boom limit device

- When the boom elevation angle reaches the maximum angle the buzzer sounds and boom action cut off. This protection is two-stage control ensured by both LMI system and travel switch.

### Back-stop device

- Its major components are tubes and spring, in order to buffer the boom backlash and prevent further tipping back.

### Boom angle indicator

- Pendulum angle indicator is fixed on the side of boom base close to the cab, so as to provide convenience to the operator.

### Hook latch

- The lifting hook is installed with a baffle plate to prevent wire rope from falling off.

## Safety Device



### Monitoring system

- Remote monitoring system is a standardized offering to provide functions like GPS locating, GPRS data transfer, machine status inquiry and statistics, operating data monitoring and analysis, remote diagnosis of failures.

### Lightning protection device

- It is offered as an optional feature, which includes the grounding device that can effectively protect the electric system elements and workers from lightning.

### Tri-color load indicator

- The load indication light has three colors, green, yellow and red, and the real time load status is presented on the display. When the actual load is smaller than 90% of rated load, the green light is on; when the actual load is larger than 90% and smaller than 100%, the yellow light is on, the alarm light flashes and sends out intermittent sirens; when the actual load reaches 102% of rated load, the red light on, the alarm light flashes and sends out continuous sirens. At this moment, the system will automatically cut off the crane's dangerous operation.

### Audio-visual alarm

- It flashes once the machine is powered on with electricity, so as to warn people around.

### Swing indicator light

- The swing indicator light flashes during traveling or swing.

### Illuminating light

- The machine is equipped with, short-beam light in front of machine, front angle adjustable far-beam, lamps in operator's cab, lighting devices for night operation, so as to increase the visibility during work.

### Rearview Mirror

- It is installed on the left of the operator's cab for monitoring the rear part of the machine.

### Pharos

- Pharos is mounted on the top of boom/jib to indicating the height.

### Anemometer

- It is mounted on the top of boom/jib, and displayed on the monitor in the cab.

### Electronic level gauge

- It displays the tipping angle of crane on the monitor in real time, protecting the machine from dangerous situation.

### Operation release

- If the operator leaves the seat, all control handles will be locked immediately to prevent any mis-operation due to accidental collision.





**SCE1000A-EV**  
**SANY CRAWLER CRANE**  
**100 TONS LIFTING CAPACITY**

QUALITY CHANGES THE WORLD

## Technical Parameters

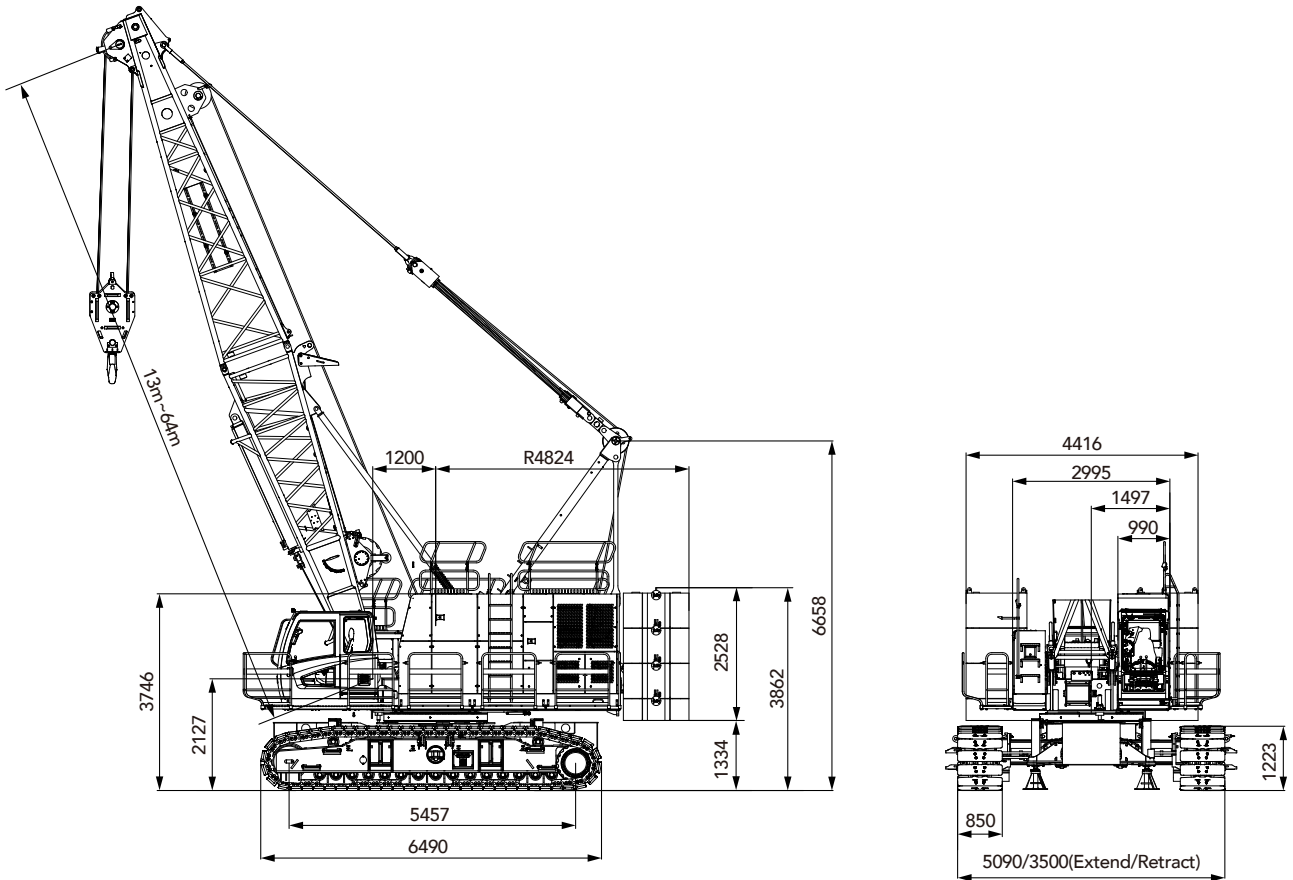
- Page 10 Major Performance & Specifications
- Page 11 Outline Dimension
- Page 12 Transport Dimension
- Page 16 Transport Plan 1



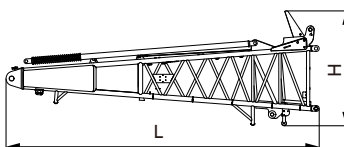
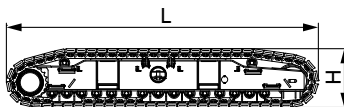
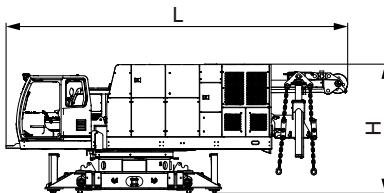
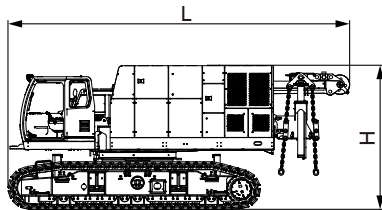
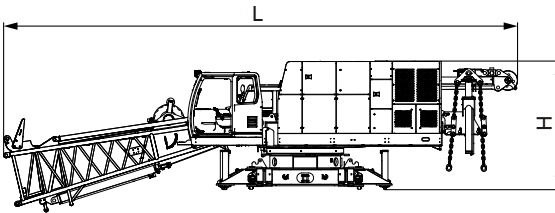
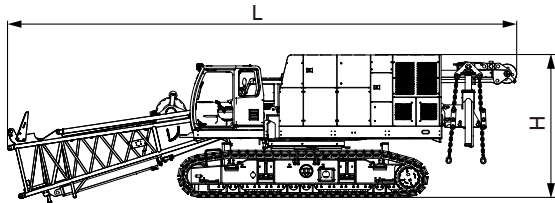
## Major Performance & Specifications

| Major Performance & Specifications of SCE1000A-EV |  |        |                 |
|---|--|--------|-----------------|
| Performance Indicators                            |  | Unit   | Parameter       |
| H   | Max. rated lifting capacity  | t      | 100             |
|   | Max. lifting moment  | t·m    | 100 × 3.8=380   |
|   | Boom length  | m      | 13~64           |
|   | Boom luffing angle   | °      | 30~80           |
| FJ  | Max. rated lifting capacity  | t      | 11              |
|   | Jib length   | m      | 9~22.5          |
|   | Longest boom + longest jib   | m      | 52+22.5         |
|   | Jib angle  | °      | 15\30           |
| Speed   | Rope speed of main/aux. winch (1st layer)                                  | m/min  | 121             |
|   | Rope speed of boom hoist winch (1st layer)                                 | m/min  | 59              |
|   | Swing speed  | rpm    | 2.7             |
|   | Travel speed   | km/h   | 2\1             |
| Wire rope   | Main hoist wire rope: diameter × length                                    | φ mm×m | φ 26×240        |
|   | Aux. hoist wire rope: diameter × length                                    | φ mm×m | φ 26×180        |
|   | Single line pull of main/aux. hoist wire rope                              | t      | 12              |
| Motor   | Output power   | kW     | 206             |
|   | Rated speed  | rpm    | 1500            |
| Transport   | Weight of machine with basic boom  | t      | 98              |
|   | Transport weight of basic machine (with boom base, crawlers and 4 winches) | t      | 54.5            |
|   | Transport weight of basic machine (without crawlers)                       | t      | 33.2            |
|   | Machine transport dimension (with boom base, crawlers and 4 winches)L×W×H  | mm     | 13600×3500×3690 |
|   | Machine transport dimension (without crawlers )L×W×H                       | mm     | 8750×3000×3290  |
| Other specifications                              | Average ground pressure (basic boom)                                       | MPa    | 0.1             |
|   | Gradeability   | %      | 30              |

### Outline Dimension



## Transport Dimension



### Basic machine 1 (with boom base , crawlers and 4 winches ) ×1

|                       |        |
|-----------------------|--------|
| Length (L)            | 13.20m |
| Width (W)             | 3.50m  |
| Height (H)            | 3.52m  |
| Weight with 3rd winch | 54.50t |

### Basic machine 2 (with boom base and 4 winches ) ×1

|                       |        |
|-----------------------|--------|
| Length (L)            | 13.20m |
| Width (W)             | 3.00m  |
| Height (H)            | 3.13m  |
| Weight with 3rd winch | 33.22t |

### Basic machine 3 (with crawlers and 3 winches) ×1

|            |        |
|------------|--------|
| Length (L) | 8.78m  |
| Width (W)  | 3.50m  |
| Height (H) | 3.52m  |
| Weight     | 51.00t |

### Basic machine 4 ×1

|            |        |
|------------|--------|
| Length (L) | 8.73m  |
| Width (W)  | 3.00m  |
| Height (H) | 3.13m  |
| Weight     | 29.92t |

### Crawlers ×2

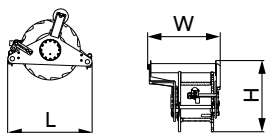
|            |        |
|------------|--------|
| Length (L) | 6.49m  |
| Width (W)  | 1.10m  |
| Height (H) | 1.22m  |
| Weight     | 10.65t |

### Boom base with the 3rd winch ×1

|            |       |
|------------|-------|
| Length (L) | 6.72m |
| Width (W)  | 1.78m |
| Height (H) | 2.06m |
| Weight     | 3.58t |

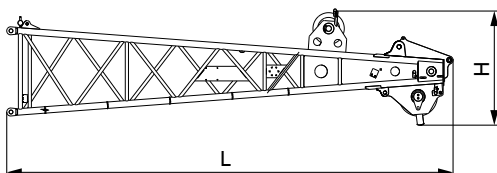
Note: weight of the optional 3rd winch is 1.04t.

## Transport Dimension



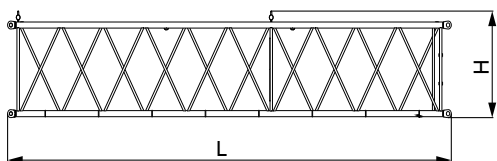
### 3rd winch ×1

|            |       |
|------------|-------|
| Length (L) | 1.11m |
| Width (W)  | 0.95m |
| Height (H) | 0.94m |
| Weight     | 1.04t |



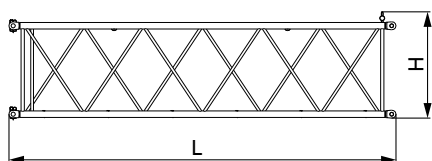
### Boom top ×1

|            |       |
|------------|-------|
| Length (L) | 7.13m |
| Width (W)  | 1.49m |
| Height (H) | 1.79m |
| Weight     | 1.50t |



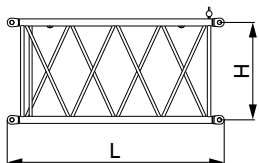
### 9m boom insert ×4

|            |       |
|------------|-------|
| Length (L) | 9.14m |
| Width (W)  | 1.51m |
| Height (H) | 1.47m |
| Weight     | 1.07t |



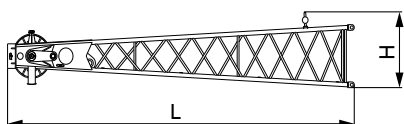
### 6m boom insert ×2

|            |       |
|------------|-------|
| Length (L) | 6.14m |
| Width (W)  | 1.51m |
| Height (H) | 1.47m |
| Weight     | 0.78t |



### 3m boom insert ×1

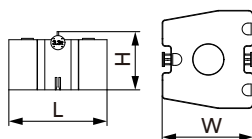
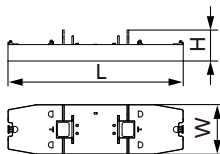
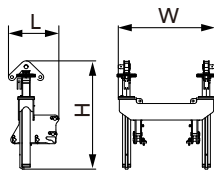
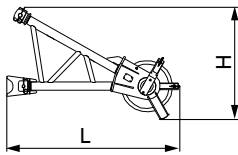
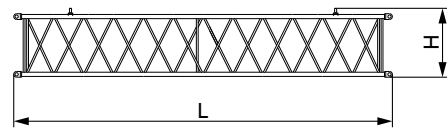
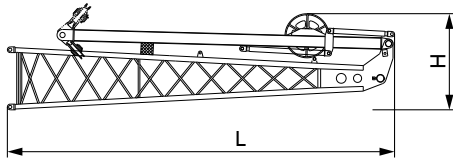
|            |       |
|------------|-------|
| Length (L) | 3.14m |
| Width (W)  | 1.51m |
| Height (H) | 1.47m |
| Weight     | 0.50t |



### Fixed jib top ×1

|            |       |
|------------|-------|
| Length (L) | 4.93m |
| Width (W)  | 0.87m |
| Height (H) | 0.92m |
| Weight     | 0.31t |

## Transport Dimension



### Fixed jib base and strut ×1

|            |       |
|------------|-------|
| Length (L) | 4.75m |
| Width (W)  | 0.87m |
| Height (H) | 1.18m |
| Weight     | 0.75t |

### 4.5m fixed jib ×3

|            |       |
|------------|-------|
| Length (L) | 4.57m |
| Width (W)  | 0.87m |
| Height (H) | 0.83m |
| Weight     | 0.24t |

### Extension jib ×1

|            |       |
|------------|-------|
| Length (L) | 1.82m |
| Width (W)  | 0.90m |
| Height (H) | 1.20m |
| Weight     | 0.2t  |

### Counterweight cylinder bracket ×1

|            |       |
|------------|-------|
| Length (L) | 2.21m |
| Width (W)  | 1.98m |
| Height (H) | 1.03m |
| Weight     | 1.5t  |

Note: weight includes that for chains and pendant bar

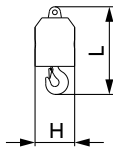
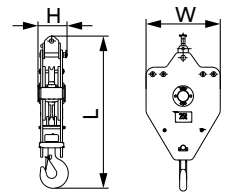
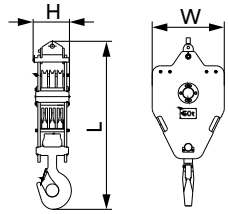
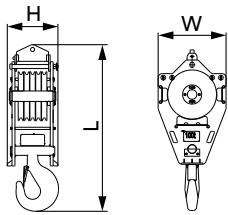
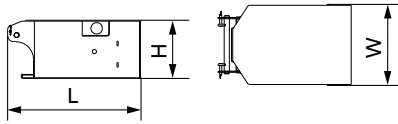
### Counterweight tray ×1

|            |       |
|------------|-------|
| Length (L) | 4.42m |
| Width (W)  | 1.25m |
| Height (H) | 0.78m |
| Weight     | 8.8t  |

### Rear counterweight ×6

|            |       |
|------------|-------|
| Length (L) | 1.16m |
| Width (W)  | 1.13m |
| Height (H) | 0.74m |
| Weight     | 3.3t  |

## Transport Dimension



### Carbody counterweight ×2

|            |       |
|------------|-------|
| Length (L) | 1.85m |
| Width (W)  | 1.13m |
| Height (H) | 0.81m |
| Weight     | 5.5t  |

### 100t hook ×1

|            |       |
|------------|-------|
| Length (L) | 2.08m |
| Width (W)  | 0.85m |
| Height (H) | 0.63m |
| Weight     | 1.36t |

### 50t hook ×1

|            |       |
|------------|-------|
| Length (L) | 1.95m |
| Width (W)  | 0.90m |
| Height (H) | 0.45m |
| Weight     | 1.04t |

### 25t hook ×1

|            |       |
|------------|-------|
| Length (L) | 1.86m |
| Width (W)  | 0.90m |
| Height (H) | 0.35m |
| Weight     | 0.79t |

### 13.5t ball hook ×1

|            |       |
|------------|-------|
| Length (L) | 0.95m |
| Width (W)  | 0.43m |
| Height (H) | 0.43m |
| Weight     | 0.45t |

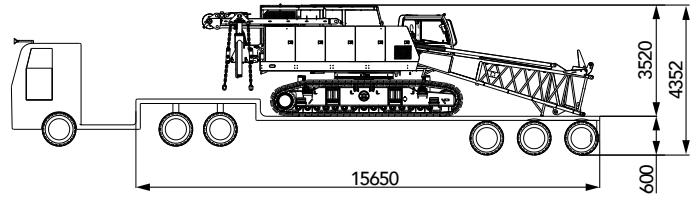
#### Note:

- 1.The transport dimensions of each part in the table are schematic, not proportional to the real parts. The dimensions are designed value without package considered.
- 2.The Weight is designed value that the actual manufactured part may deviate a little.

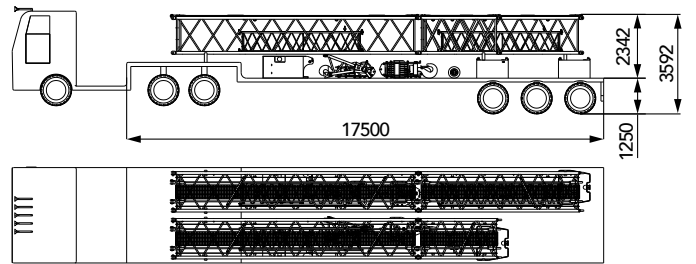
## Transport Plan

### Transport Plan 1

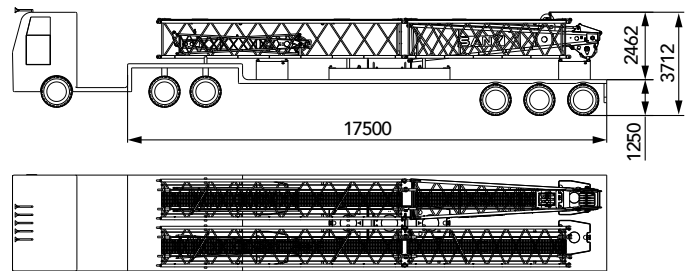
|           |  |
|-----------|--|
| Trailer 1 |  |
| Part (s)  | <ul style="list-style-type: none"> <li>Basic machine with 4 winches</li> </ul> |
| Weight    | <ul style="list-style-type: none"> <li>54.5t</li> </ul>                        |



|           |   |
|-----------|---|
| Trailer 2 |   |
| Part (s)  | <ul style="list-style-type: none"> <li>9m boom x2</li> <li>6m boom x1</li> <li>3m boom x1</li> <li>Extension jib x1</li> <li>4.5m fixed jib x3</li> <li>Carbody counterweight x2</li> <li>Left counterweight x1</li> <li>Right counterweight x1</li> <li>100t hook x1</li> <li>50t hook x1</li> <li>25t hook x1</li> <li>13.5t hook x1</li> </ul> |
| Weight    | <ul style="list-style-type: none"> <li>26t</li> </ul>   |



|           |  |
|-----------|--|
| Trailer 3 |  |
| Part (s)  | <ul style="list-style-type: none"> <li>9m boom x2</li> <li>6m boom x1</li> <li>Boom top x1</li> <li>Fixed jib base x1</li> <li>Fixed jib top x1</li> <li>Counterweight tray x1</li> <li>Left counterweight x2</li> <li>Right counterweight x2</li> </ul> |
| Weight    | <ul style="list-style-type: none"> <li>27t</li> </ul>  |

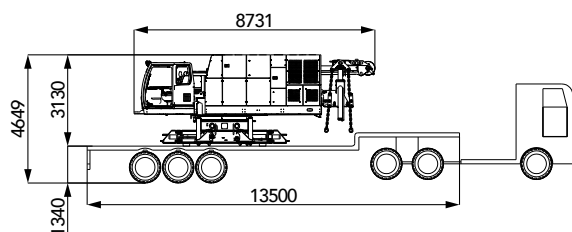




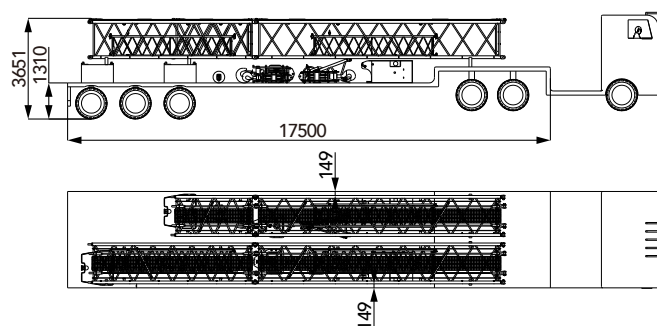
## Transport Plan

### Transport Plan 2

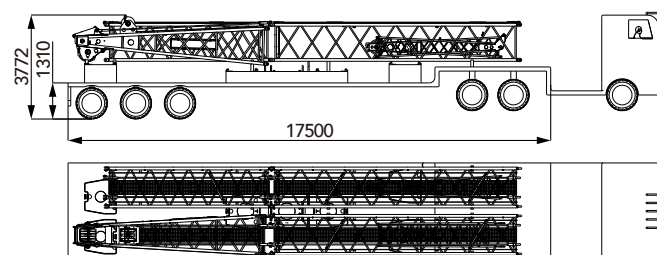
|           |   |
|-----------|---|
| Trailer 1 |   |
| Part (s)  | <ul style="list-style-type: none"> <li>Basic machine</li> </ul> |
| Weight    | <ul style="list-style-type: none"> <li>29.92t</li> </ul>        |



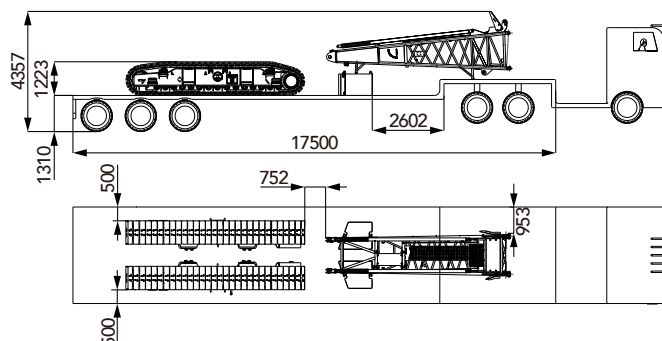
|           |   |
|-----------|---|
| Trailer 2 |   |
| Part (s)  | <ul style="list-style-type: none"> <li>Carbody counterweight × 2 5.5t×2</li> <li>Counterweight × 2 3.3t×2</li> <li>Hook block 100t × 1 1.36t</li> <li>Hook block 50t × 1 0.75t</li> <li>Hook block 25t × 1 0.53t</li> <li>Hook block 13.5t × 1 0.45t</li> <li>Extension jib × 1 0.2t</li> <li>Boom insert 9m × 2 1.06t×2</li> <li>Boom insert 6m × 1 0.82t</li> <li>Boom insert 3m × 1 0.61t</li> <li>4.5t fixed jib × 3 0.23t×3</li> </ul> |
| Weight    | <ul style="list-style-type: none"> <li>25.13t</li> </ul>  |



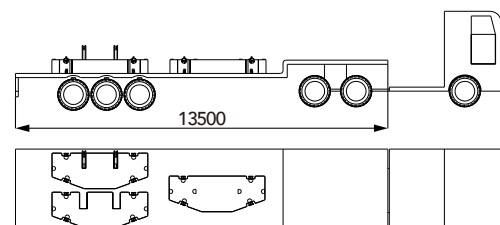
|           |   |
|-----------|---|
| Trailer 3 |   |
| Part (s)  | <ul style="list-style-type: none"> <li>Counterweight × 4 3.3t×4</li> <li>Counterweight support × 1 8.6t</li> <li>Boom insert 9m × 2 1.06t×2</li> <li>Boom insert 6m × 1 0.82t</li> <li>Boom top × 1 1.36t</li> <li>Jib upper boom × 1 0.31t</li> <li>Jib base boom × 1 0.24t</li> </ul> |
| Weight    | <ul style="list-style-type: none"> <li>26.65t</li> </ul>  |



|           |  |
|-----------|--|
| Trailer 4 |  |
| Part (s)  | <ul style="list-style-type: none"> <li>Left crawler frame × 1 10.2t</li> <li>Right crawler frame × 1 10.2t</li> <li>Boom base × 1 1.52t</li> <li>Counterweight 3 × 1 3.1t</li> <li>Counterweight 4 × 1 3.1t</li> </ul> |
| Weight    | <ul style="list-style-type: none"> <li>28.1t</li> </ul>  |



|           |   |
|-----------|---|
| Trailer 5 |   |
| Part (s)  | <ul style="list-style-type: none"> <li>Counterweight support × 1 8.16t</li> <li>Counterweight 1 × 1 7.53t</li> <li>Counterweight 2 × 1 8.14t</li> </ul> |
| Weight    | <ul style="list-style-type: none"> <li>24t</li> </ul>   |





**SCE1000A-EV**  
**SANY CRAWLER CRANE**  
**100 TONS LIFTING CAPACITY**

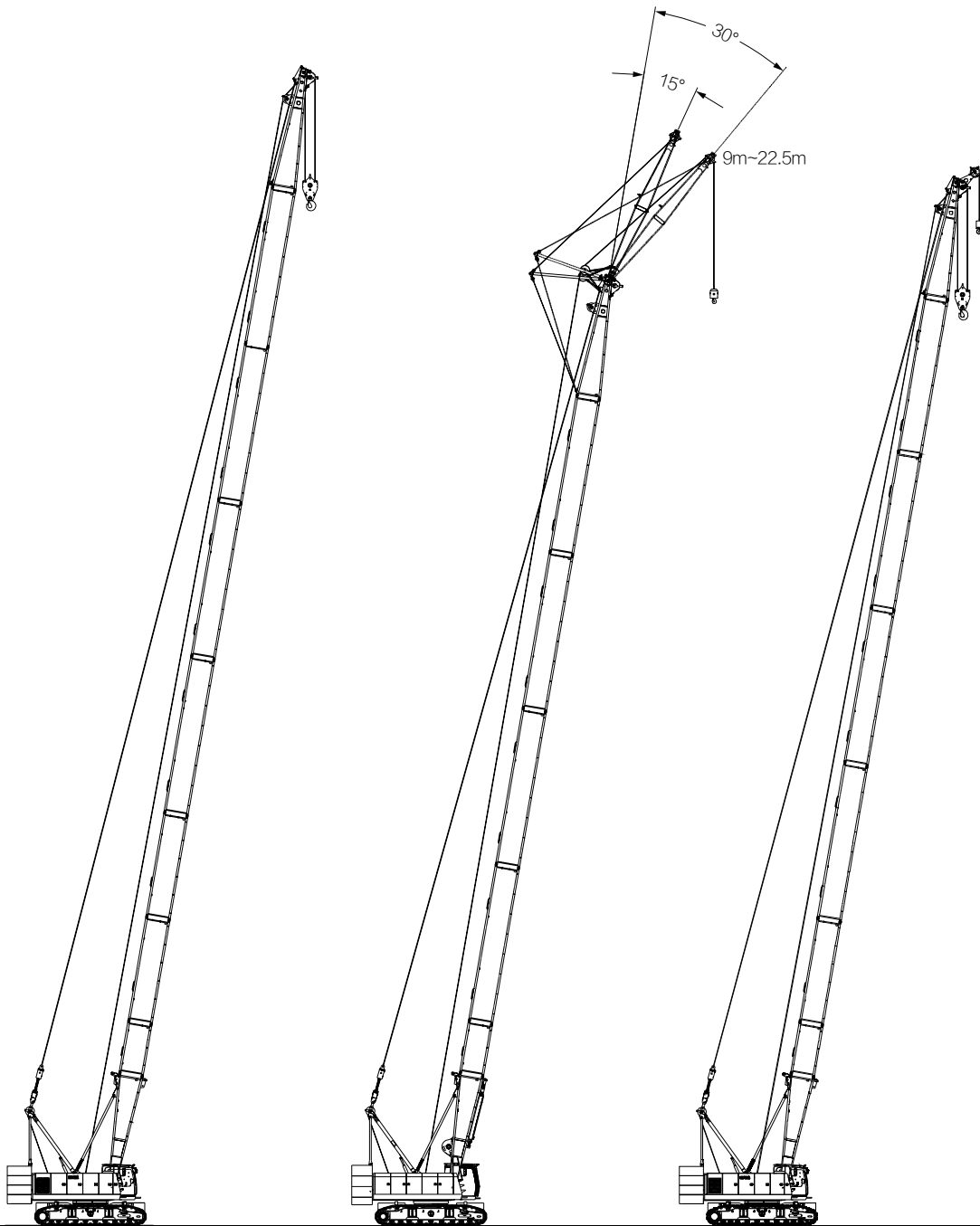
QUALITY CHANGES THE WORLD

## Configuration

- Page 20 H Configuration
- Page 26 FJ Configuration
- Page 32 HC Configuration

> 18

**Combination**

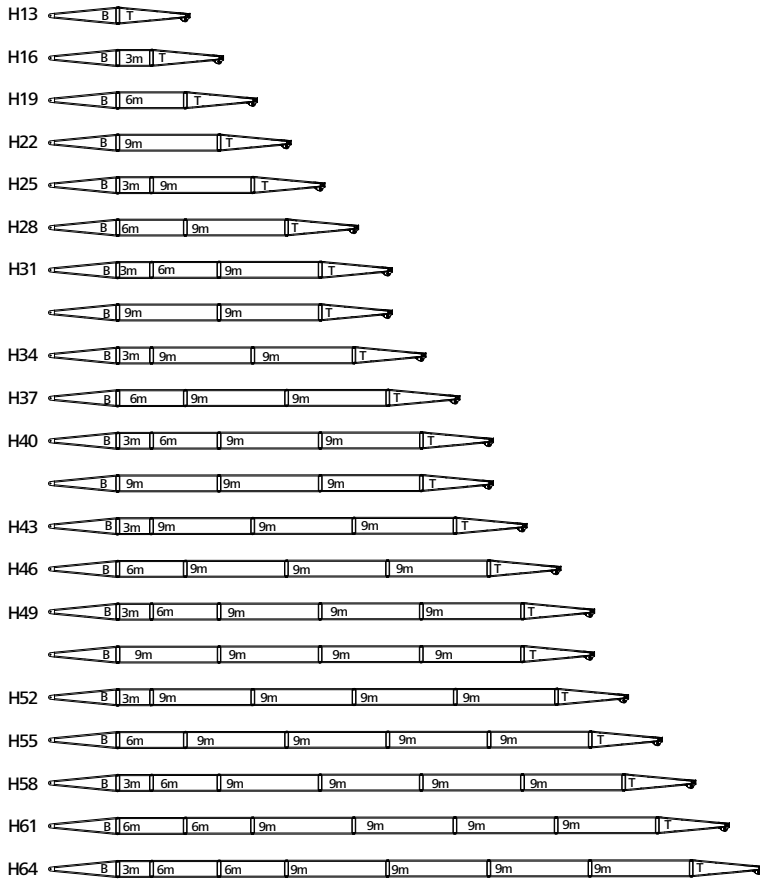


H Configuration  
13m~64m

FJ Configuration  
31m~52m

HC Configuration  
13m~58m

## Boom Combination in H



(6.5m) Boom Base



(3m) Boom Insert



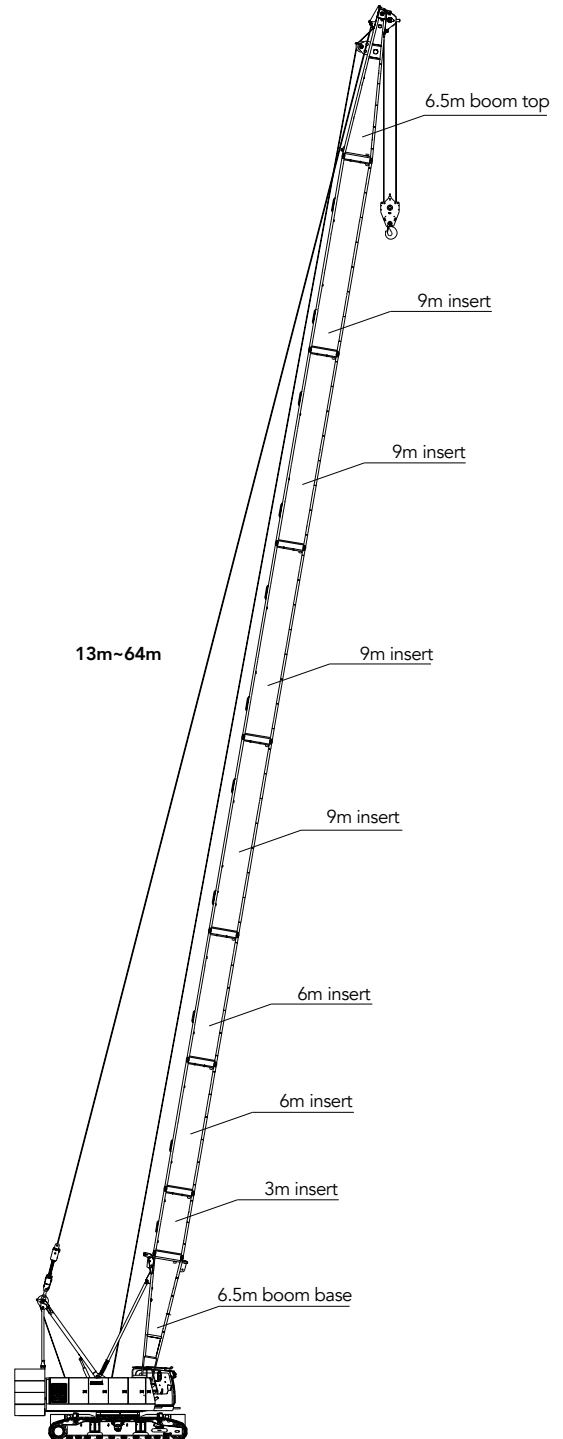
(6m) Boom Insert



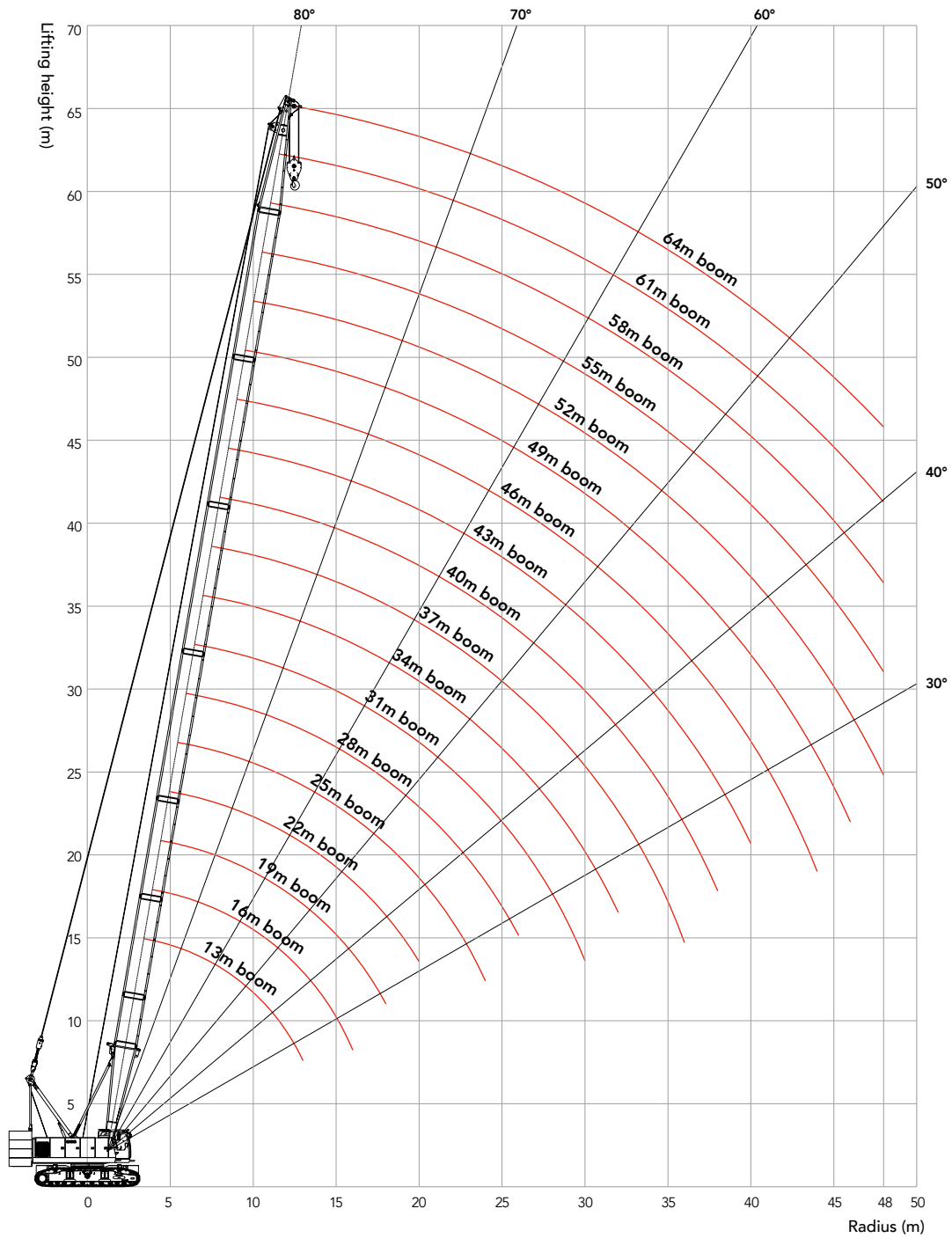
(9m) Boom Insert



(6.5m) Boom Top



## Working Radius in H Configuration



## Load Chart of H Configuration

- Note:
- 1.The rated load in the load chart is calculated complying with EN 13000;
  - 2.The working radius is the horizontal distance from the load center to the swing center;
  - 3.The actual lifting capacity must subtract the weight of hooks and other riggings from the rated capacity in the load chart.
  - 4.The load value is calculated when the object is hung freely,without considering the influence of wind on the load, ground conditions and slope, operation speed and the influence of any other negative factors over safe operation. Therefore, the operator bears the responsibility of making a judgment and decreasing the load and lowering speed.
  - 5.All ratings are calculated when the machine is parking on firm and level ground with less than 1% gradient.
  6. The load value is calculated with wind speed of 9.8m/s.
  7. More detailed information needs to refer to Operator Manual.
  8. This note is applicable to all the following load charts.

Load chart -H(Rear counterweight 28.6t, Carbody counterweight 11t) 1/2

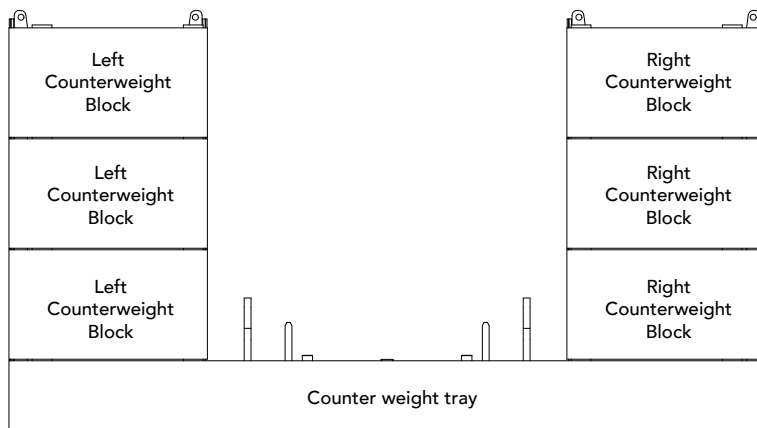
| R/BL (m) | 13   | 16   | 19   | 22   | 25   | 28   | 31   | 34   | 37   | R/BL (m) |
|----------|------|------|------|------|------|------|------|------|------|----------|
| 3.8      | 100  |      |      |      |      |      |      |      |      | 3.8      |
| 4        | 90   |      |      |      |      |      |      |      |      | 4        |
| 4.5      | 84.2 | 82   |      |      |      |      |      |      |      | 4.5      |
| 5        | 75   | 73   |      |      |      |      |      |      |      | 5        |
| 5.5      | 69   | 68.8 | 68.2 |      |      |      |      |      |      | 5.5      |
| 6        | 62.9 | 62.2 | 61.4 | 59.2 |      |      |      |      |      | 6        |
| 6.5      | 55.6 | 55.1 | 54.6 | 53.8 | 52   |      |      |      |      | 6.5      |
| 7        | 49.9 | 49.4 | 49   | 48.6 | 47.6 | 46.2 |      |      |      | 7        |
| 7.5      | 45.1 | 44.7 | 44.3 | 44   | 43.6 | 42.7 | 41.5 |      |      | 7.5      |
| 8        | 41.2 | 40.8 | 40.5 | 40.2 | 39.8 | 39.5 | 38.6 | 37.5 |      | 8        |
| 9        | 35.1 | 34.7 | 34.4 | 34.2 | 33.9 | 33.6 | 33.4 | 32.9 | 32.1 | 9        |
| 10       | 30.5 | 30.1 | 29.9 | 29.7 | 29.4 | 29.2 | 28.9 | 28.7 | 28.4 | 10       |
| 11       | 26.9 | 26.6 | 26.4 | 26.2 | 25.9 | 25.7 | 25.5 | 25.2 | 25   | 11       |
| 12       | 24   | 23.7 | 23.5 | 23.4 | 23.1 | 22.9 | 22.7 | 22.5 | 22.3 | 12       |
| 13       | 21.7 | 21.4 | 21.2 | 21   | 20.8 | 20.6 | 20.4 | 20.2 | 20   | 13       |
| 14       |      | 19.5 | 19.3 | 19.1 | 18.9 | 18.7 | 18.5 | 18.3 | 18.2 | 14       |
| 15       |      | 17.8 | 17.7 | 17.5 | 17.3 | 17.1 | 16.9 | 16.7 | 16.6 | 15       |
| 16       |      | 16.4 | 16.3 | 16.1 | 15.9 | 15.7 | 15.6 | 15.3 | 15.2 | 16       |
| 18       |      |      | 14   | 13.8 | 13.6 | 13.5 | 13.3 | 13.1 | 12.9 | 18       |
| 20       |      |      |      | 12.1 | 11.8 | 11.7 | 11.6 | 11.3 | 11.2 | 20       |
| 22       |      |      |      |      | 10.4 | 10.3 | 10.1 | 9.9  | 9.8  | 22       |
| 24       |      |      |      |      | 9.3  | 9.1  | 9    | 8.8  | 8.6  | 24       |
| 26       |      |      |      |      |      | 8.2  | 8    | 7.8  | 7.7  | 26       |
| 28       |      |      |      |      |      |      | 7.2  | 7    | 6.9  | 28       |
| 30       |      |      |      |      |      |      | 6.5  | 6.3  | 6.2  | 30       |
| 32       |      |      |      |      |      |      |      | 5.7  | 5.6  | 32       |
| 34       |      |      |      |      |      |      |      |      | 5    | 34       |
| 36       |      |      |      |      |      |      |      |      | 4.6  | 36       |

## Load Chart of H Configuration

| Load chart -H(Rear counterweight 28.6t, Carbody counterweight 11t) 2/2 |      |      |      |      |      |      |      |      |      |          |
|--|------|------|------|------|------|------|------|------|------|----------|
| R/BL (m)   | 40   | 43   | 46   | 49   | 52   | 55   | 58   | 61   | 64   | R/BL (m) |
| 9  | 31.4 |      |      |      |      |      |      |      |      | 9        |
| 10   | 27.9 | 27.2 |      |      |      |      |      |      |      | 10       |
| 11   | 24.8 | 24.5 | 23.9 | 23.4 |      |      |      |      |      | 11       |
| 12   | 22.1 | 21.9 | 21.7 | 21.2 | 20.7 |      |      |      |      | 12       |
| 13   | 19.9 | 19.6 | 19.5 | 19.3 | 18.9 | 18.1 | 16   |      |      | 13       |
| 14   | 18   | 17.8 | 17.6 | 17.4 | 17.2 | 16.9 | 15.4 | 14.2 |      | 14       |
| 15   | 16.4 | 16.2 | 16   | 15.9 | 15.6 | 15.5 | 14.8 | 13.6 | 11.8 | 15       |
| 16   | 15   | 14.8 | 14.7 | 14.5 | 14.3 | 14.1 | 13.9 | 12.9 | 10.5 | 16       |
| 18   | 12.8 | 12.6 | 12.4 | 12.3 | 12.1 | 11.9 | 11.7 | 11.6 | 9.8  | 18       |
| 20   | 11.1 | 10.8 | 10.7 | 10.6 | 10.3 | 10.2 | 10   | 9.9  | 8.8  | 20       |
| 22   | 9.7  | 9.4  | 9.3  | 9.2  | 9    | 8.8  | 8.6  | 8.5  | 7.8  | 22       |
| 24   | 8.5  | 8.3  | 8.2  | 8    | 7.8  | 7.7  | 7.5  | 7.4  | 6.8  | 24       |
| 26   | 7.6  | 7.3  | 7.2  | 7.1  | 6.9  | 6.7  | 6.5  | 6.4  | 5.8  | 26       |
| 28   | 6.7  | 6.5  | 6.4  | 6.3  | 6.1  | 5.9  | 5.7  | 5.6  | 5.2  | 28       |
| 30   | 6    | 5.8  | 5.7  | 5.6  | 5.4  | 5.2  | 5    | 4.9  | 4.5  | 30       |
| 32   | 5.4  | 5.2  | 5.1  | 5    | 4.8  | 4.6  | 4.4  | 4.3  | 3.9  | 32       |
| 34   | 4.9  | 4.7  | 4.6  | 4.4  | 4.2  | 4.1  | 3.9  | 3.8  | 3.4  | 34       |
| 36   | 4.4  | 4.2  | 4.1  | 4    | 3.8  | 3.6  | 3.4  | 3.3  | 2.9  | 36       |
| 38   | 4    | 3.8  | 3.7  | 3.6  | 3.3  | 3.2  | 3    | 2.9  | 2.5  | 38       |
| 40   |      | 3.4  | 3.3  | 3.2  | 3    | 2.9  | 2.6  | 2.5  | 2.1  | 40       |
| 42   |      |      | 3    | 2.8  | 2.6  | 2.5  | 2.3  | 2.2  | 1.8  | 42       |
| 44   |      |      | 2.7  | 2.5  | 2.3  | 2.2  | 2    | 1.9  | 1.5  | 44       |
| 46   |      |      |      | 2.3  | 2.1  | 1.9  | 1.7  | 1.6  | 1.2  | 46       |
| 48   |      |      |      |      | 1.8  | 1.7  | 1.5  | 1.3  | 1    | 48       |

## Instructions on H load chart with reduced counterweight

1. Please follow the instructions in the Operator Manual to set properly via Menu Setting – Configuration Setting – Counterweight Selection.
2. Machine rear counterweight is about 28.6t, with rear counterweight tray, two left counterweight blocks, two right counterweight blocks, no carbody counterweight.
3. Five rear counterweight combinations, 0t, 8.8t, 15.4t, 22t, 28.6t.

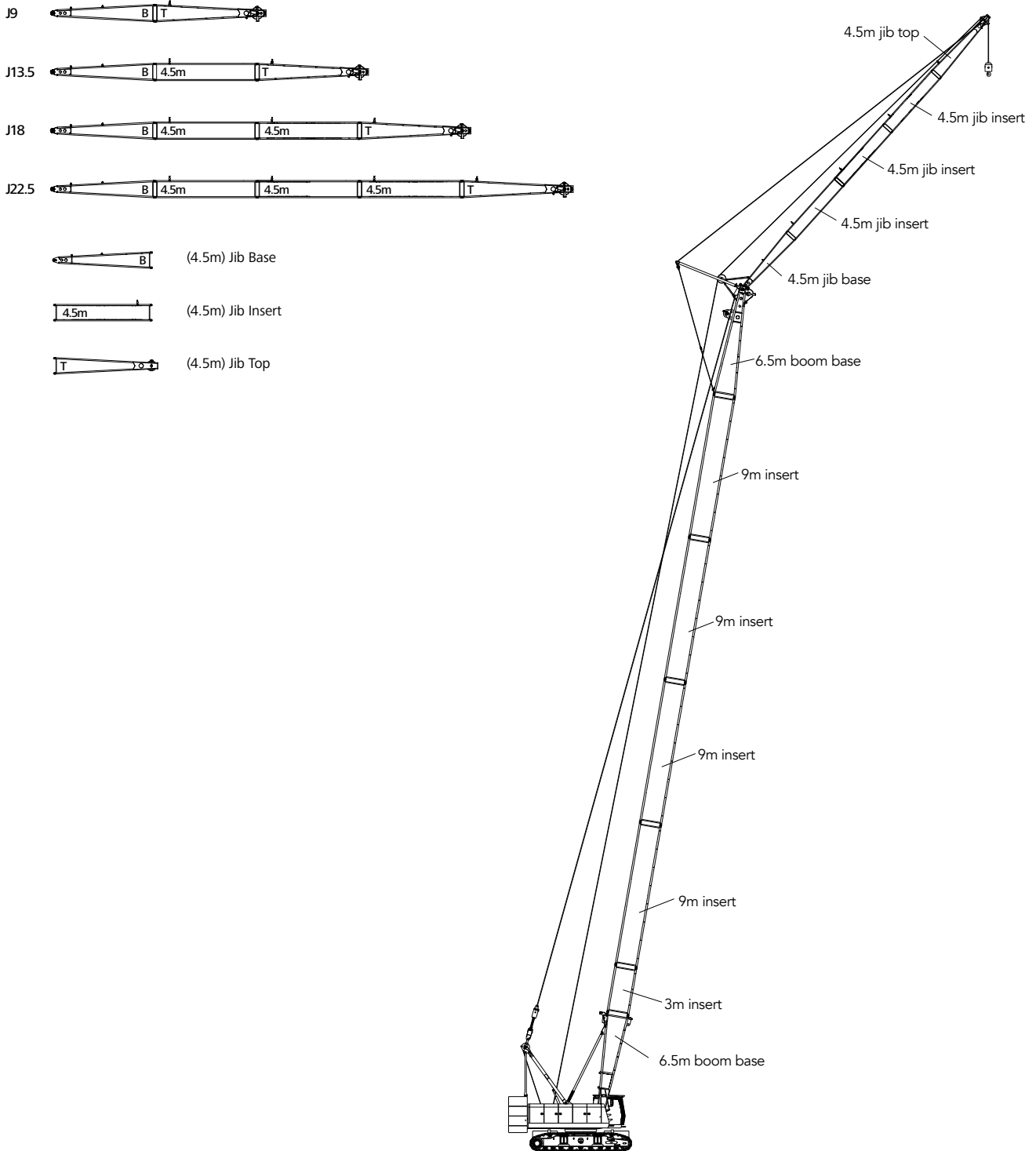




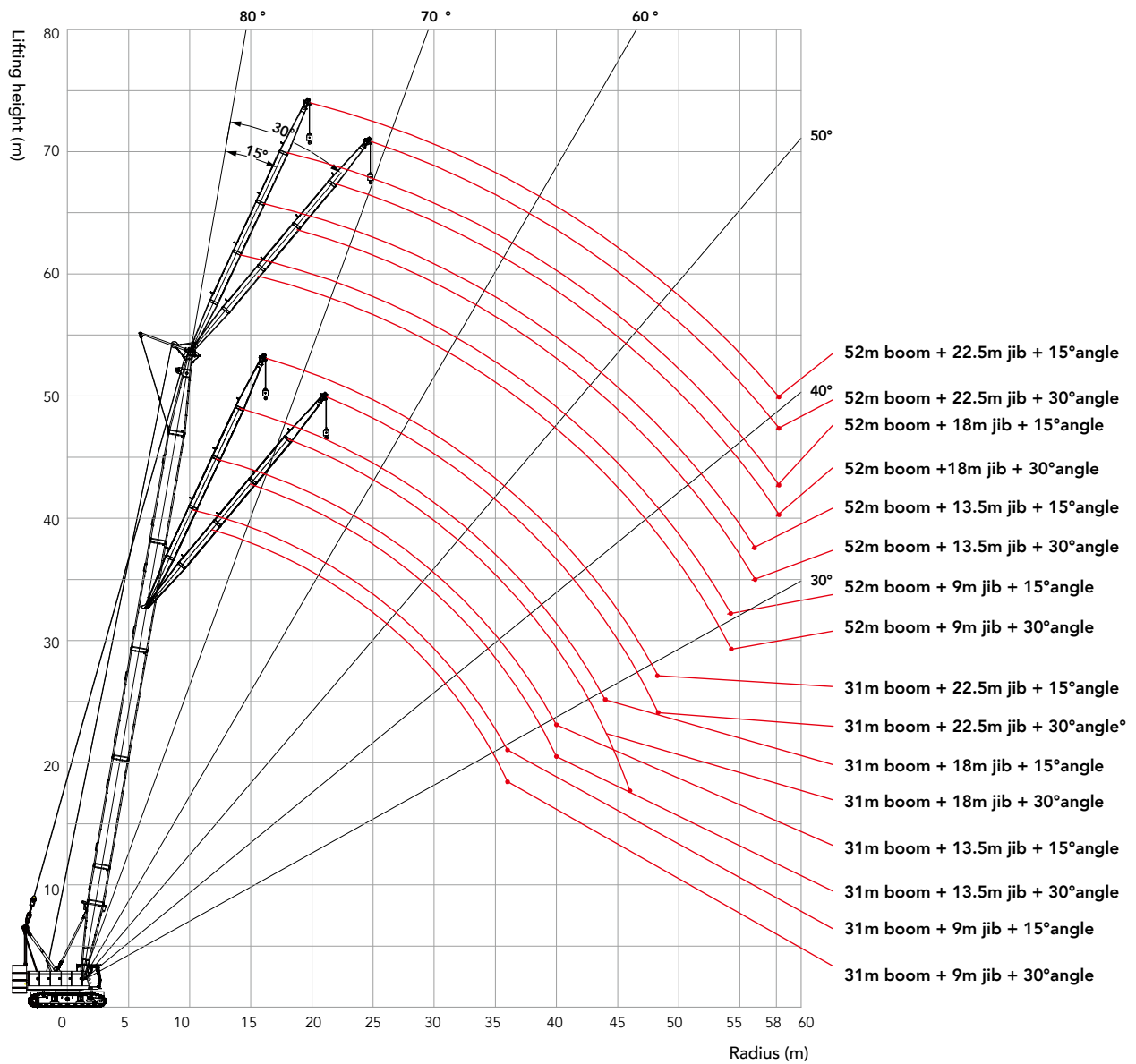
## Load Chart of H Configuration

| Load chart -H with less counterweight (Rear counterweight 22t, Carbody counterweight 0t) |      |      |      |      |      |      |      |      |      |      |      |      |      |      |      |          |
|--|------|------|------|------|------|------|------|------|------|------|------|------|------|------|------|----------|
| R/BL (m)   | 13   | 16   | 19   | 22   | 25   | 28   | 31   | 34   | 37   | 40   | 43   | 46   | 49   | 52   | 55   | R/BL (m) |
| 4  | 90   |      |      |      |      |      |      |      |      |      |      |      |      |      |      | 4        |
| 4.5  | 76   |      |      |      |      |      |      |      |      |      |      |      |      |      |      | 4.5      |
| 5  | 65.1 | 62.2 |      |      |      |      |      |      |      |      |      |      |      |      |      | 5        |
| 5.5  | 55.4 | 54.7 | 52.5 |      |      |      |      |      |      |      |      |      |      |      |      | 5.5      |
| 6  | 48.2 | 47.7 | 47   | 45.2 |      |      |      |      |      |      |      |      |      |      |      | 6        |
| 6.5  | 42.6 | 42.2 | 41.8 | 41   | 39.6 |      |      |      |      |      |      |      |      |      |      | 6.5      |
| 7  | 38.2 | 37.8 | 37.4 | 37.1 | 36.2 | 35.1 |      |      |      |      |      |      |      |      |      | 7        |
| 7.5  | 34.5 | 34.1 | 33.8 | 33.6 | 33.2 | 32.4 | 31.5 |      |      |      |      |      |      |      |      | 7.5      |
| 8  | 31.5 | 31.1 | 30.9 | 30.6 | 30.3 | 30   | 29.2 | 28.3 |      |      |      |      |      |      |      | 8        |
| 9  | 26.7 | 26.4 | 26.2 | 26   | 25.7 | 25.5 | 25.2 | 24.7 | 24.1 |      |      |      |      |      |      | 9        |
| 10   | 23.2 | 22.9 | 22.7 | 22.5 | 22.2 | 22   | 21.8 | 21.6 | 21.4 | 20.8 | 20.2 |      |      |      |      | 10       |
| 11   | 20.4 | 20.1 | 19.9 | 19.8 | 19.5 | 19.3 | 19.2 | 18.9 | 18.7 | 18.6 | 18.1 | 17.7 | 17.2 |      |      | 11       |
| 12   | 18.2 | 17.9 | 17.8 | 17.6 | 17.3 | 17.2 | 17   | 16.8 | 16.6 | 16.4 | 16.2 | 15.9 | 15.5 | 15.1 |      | 12       |
| 13   | 16.4 | 16.1 | 16   | 15.8 | 15.6 | 15.4 | 15.2 | 15   | 14.9 | 14.7 | 14.5 | 14.3 | 14.1 | 13.7 | 13.3 | 13       |
| 14   |      | 14.6 | 14.5 | 14.3 | 14.1 | 13.9 | 13.8 | 13.6 | 13.4 | 13.3 | 13   | 12.9 | 12.7 | 12.5 | 12.1 | 14       |
| 15   |      | 13.4 | 13.2 | 13.1 | 12.8 | 12.7 | 12.5 | 12.3 | 12.2 | 12   | 11.8 | 11.7 | 11.5 | 11.3 | 11.1 | 15       |
| 16   |      | 12.3 | 12.1 | 12   | 11.7 | 11.6 | 11.5 | 11.2 | 11.1 | 11   | 10.7 | 10.6 | 10.5 | 10.2 | 10.1 | 16       |
| 18   |      |      | 10.4 | 10.2 | 10   | 9.9  | 9.7  | 9.5  | 9.4  | 9.2  | 9    | 8.9  | 8.7  | 8.5  | 8.4  | 18       |
| 20   |      |      |      | 8.8  | 8.6  | 8.5  | 8.4  | 8.1  | 8    | 7.9  | 7.7  | 7.5  | 7.4  | 7.2  | 7.1  | 20       |
| 22   |      |      |      |      | 7.5  | 7.4  | 7.3  | 7.1  | 6.9  | 6.8  | 6.6  | 6.5  | 6.3  | 6.1  | 6    | 22       |
| 24   |      |      |      |      | 6.6  | 6.5  | 6.4  | 6.2  | 6    | 5.9  | 5.7  | 5.6  | 5.4  | 5.2  | 5.1  | 24       |
| 26   |      |      |      |      |      | 5.8  | 5.6  | 5.4  | 5.3  | 5.2  | 5    | 4.8  | 4.7  | 4.5  | 4.4  | 26       |
| 28   |      |      |      |      |      |      | 5    | 4.8  | 4.7  | 4.5  | 4.3  | 4.2  | 4.1  | 3.9  | 3.7  | 28       |
| 30   |      |      |      |      |      |      | 4.4  | 4.2  | 4.1  | 4    | 3.8  | 3.7  | 3.5  | 3.3  | 3.2  | 30       |
| 32   |      |      |      |      |      |      |      | 3.8  | 3.6  | 3.5  | 3.3  | 3.2  | 3.1  | 2.9  | 2.7  | 32       |
| 34   |      |      |      |      |      |      |      |      | 3.2  | 3.1  | 2.9  | 2.8  | 2.6  | 2.4  | 2.3  | 34       |
| 36   |      |      |      |      |      |      |      |      | 2.9  | 2.7  | 2.5  | 2.4  | 2.3  | 2.1  | 2    | 36       |
| 38   |      |      |      |      |      |      |      |      |      | 2.4  | 2.2  | 2.1  | 2    | 1.8  | 1.6  | 38       |
| 40   |      |      |      |      |      |      |      |      |      |      | 1.9  | 1.8  | 1.7  | 1.5  | 1.3  | 40       |
| 42   |      |      |      |      |      |      |      |      |      |      |      | 1.5  | 1.4  | 1.2  | 1.1  | 42       |

## Boom Combination of FJ Configuration



## Working Radius in FJ Configuration



## Load Chart of FJ Configuration

| Load chart -FJ (Rear counterweight 28.6t, Carbody counterweight 11t) 1/4 |      |      |      |      |      |     |      |     |      |      |      |     |      |     |      |     |                   |
|--|------|------|------|------|------|-----|------|-----|------|------|------|-----|------|-----|------|-----|-------------------|
| R/BL (m)   | 31   |      |      |      |      |     |      |     | 34   |      |      |     |      |     |      |     | R/BL (m)          |
| Jib Length (m)   | 9    |      | 13.5 |      | 18   |     | 22.5 |     | 9    |      | 13.5 |     | 18   |     | 22.5 |     | Jib Length (m)    |
| Boom to Jib Angle  | 15°  | 30°  | 15°  | 30°  | 15°  | 30° | 15°  | 30° | 15°  | 30°  | 15°  | 30° | 15°  | 30° | 15°  | 30° | Boom to Jib Angle |
| 12   | 11   |      |      |      |      |     |      |     |      |      |      |     |      |     |      |     | 12                |
| 13   | 11   |      |      |      |      |     |      |     | 11   |      |      |     |      |     |      |     | 13                |
| 14   | 11   | 11   | 11   |      |      |     |      |     | 11   | 11   |      |     |      |     |      |     | 14                |
| 15   | 11   | 11   | 11   |      |      |     |      |     | 11   | 11   | 11   |     |      |     |      |     | 15                |
| 16   | 11   | 11   | 11   | 10.3 | 11   |     |      |     | 11   | 11   | 11   |     | 11   |     |      |     | 16                |
| 18   | 11   | 11   | 11   | 9.7  | 10.5 |     |      | 7.1 | 11   | 11   | 11   | 9.7 | 10.5 |     | 7.2  |     | 18                |
| 20   | 11   | 11   | 11   | 9.1  | 9.7  | 7.2 | 6.7  |     | 11   | 11   | 11   | 9.1 | 9.7  | 7.2 | 6.8  |     | 20                |
| 22   | 10.4 | 10.5 | 10.5 | 8.7  | 9    | 6.8 | 6.3  | 5.7 | 10.2 | 10.4 | 10.3 | 8.7 | 9    | 6.8 | 6.4  | 5.8 | 22                |
| 24   | 9.2  | 9.3  | 9.3  | 8.3  | 8.4  | 6.4 | 6    | 5.3 | 9    | 9.2  | 9.1  | 8.3 | 8.4  | 6.4 | 6.1  | 5.5 | 24                |
| 26   | 8.2  | 8.3  | 8.3  | 7.9  | 7.9  | 6.1 | 5.7  | 5   | 8    | 8.2  | 8.1  | 7.9 | 7.9  | 6.1 | 5.8  | 5.2 | 26                |
| 28   | 7.4  | 7.5  | 7.5  | 7.6  | 7.4  | 5.9 | 5.5  | 4.8 | 7.2  | 7.3  | 7.3  | 7.5 | 7.3  | 5.9 | 5.6  | 5   | 28                |
| 30   | 6.7  | 6.8  | 6.7  | 6.9  | 6.8  | 5.6 | 5.2  | 4.6 | 6.5  | 6.6  | 6.6  | 6.8 | 6.6  | 5.6 | 5.3  | 4.8 | 30                |
| 32   | 6    | 6.1  | 6.1  | 6.3  | 6.1  | 5.4 | 5    | 4.4 | 5.8  | 5.9  | 5.9  | 6.1 | 6    | 5.4 | 5.1  | 4.6 | 32                |
| 34   | 5.5  | 5.5  | 5.6  | 5.7  | 5.6  | 5.2 | 4.8  | 4.3 | 5.3  | 5.4  | 5.4  | 5.5 | 5.4  | 5.2 | 4.9  | 4.4 | 34                |
| 36   | 5    | 5    | 5.1  | 5.2  | 5.1  | 5.1 | 4.6  | 4.2 | 4.8  | 4.9  | 4.9  | 5   | 4.9  | 5.1 | 4.7  | 4.3 | 36                |
| 38   |      |      | 4.7  | 4.7  | 4.7  | 4.8 | 4.5  | 4   | 4.4  | 4.4  | 4.5  | 4.6 | 4.5  | 4.7 | 4.5  | 4.1 | 38                |
| 40   |      |      | 4.3  | 4.3  | 4.3  | 4.4 | 4.3  | 3.9 |      |      | 4.1  | 4.2 | 4.1  | 4.2 | 4.2  | 4   | 40                |
| 42   |      |      |      |      | 3.9  | 4   | 4    | 3.8 |      |      | 3.7  | 3.8 | 3.8  | 3.9 | 3.9  | 3.9 | 42                |
| 44   |      |      |      |      | 3.6  | 3.7 | 3.7  | 3.7 |      |      |      | 3.4 | 3.4  | 3.5 | 3.6  | 3.7 | 44                |
| 46   |      |      |      |      |      | 3.3 | 3.5  | 3.5 |      |      |      |     | 3.1  | 3.2 | 3.4  | 3.4 | 46                |
| 48   |      |      |      |      |      |     | 3.2  | 3.2 |      |      |      |     |      |     | 3.1  | 3.1 | 48                |

Note: the capacity values in shade are determined by single line pull or boom strength.

## Load Chart of FJ Configuration

| Load chart -FJ (Rear counterweight 28.6t, Carbody counterweight 11t) 2/4 |     |      |      |     |      |     |      |     |     |      |      |     |      |     |      |     |                   |
|--|-----|------|------|-----|------|-----|------|-----|-----|------|------|-----|------|-----|------|-----|-------------------|
| R/BL (m)   | 37  |      |      |     |      |     |      |     | 40  |      |      |     |      |     |      |     | R/BL (m)          |
| Jib Length (m)   | 9   |      | 13.5 |     | 18   |     | 22.5 |     | 9   |      | 13.5 |     | 18   |     | 22.5 |     | Jib Length (m)    |
| Boom to Jib Angle  | 15° | 30°  | 15°  | 30° | 15°  | 30° | 15°  | 30° | 15° | 30°  | 15°  | 30° | 15°  | 30° | 15°  | 30° | Boom to Jib Angle |
| 13   | 11  |      |      |     |      |     |      |     | 11  |      |      |     |      |     |      |     | 13                |
| 14   | 11  |      |      |     |      |     |      |     | 11  |      |      |     |      |     |      |     | 14                |
| 15   | 11  | 11   | 11   |     |      |     |      |     | 11  |      |      |     |      |     |      |     | 15                |
| 16   | 11  | 11   | 11   |     |      |     |      |     | 11  | 11   | 11   |     |      |     |      |     | 16                |
| 18   | 11  | 11   | 11   | 9.7 | 10.5 |     |      |     | 11  | 11   | 11   |     | 10.5 |     |      |     | 18                |
| 20   | 11  | 11   | 11   | 9.1 | 9.7  |     | 6.9  |     | 11  | 11   | 11   | 9.1 | 9.7  |     | 6.9  |     | 20                |
| 22   | 10  | 10.3 | 10.1 | 8.7 | 9    | 6.8 | 6.5  |     | 9.9 | 10.1 | 10   | 8.7 | 9    | 6.8 | 6.6  |     | 22                |
| 24   | 8.9 | 9.1  | 9    | 8.3 | 8.4  | 6.4 | 6.2  | 5.6 | 8.7 | 8.9  | 8.8  | 8.3 | 8.4  | 6.4 | 6.3  | 5.6 | 24                |
| 26   | 7.9 | 8    | 8    | 7.9 | 7.9  | 6.1 | 5.9  | 5.3 | 7.7 | 7.9  | 7.9  | 7.9 | 7.9  | 6.1 | 6    | 5.4 | 26                |
| 28   | 7.1 | 7.2  | 7.2  | 7.4 | 7.2  | 5.9 | 5.7  | 5.1 | 6.9 | 7.1  | 7    | 7.3 | 7.1  | 5.9 | 5.8  | 5.2 | 28                |
| 30   | 6.3 | 6.5  | 6.4  | 6.6 | 6.5  | 5.6 | 5.5  | 4.9 | 6.2 | 6.3  | 6.3  | 6.5 | 6.4  | 5.6 | 5.6  | 5   | 30                |
| 32   | 5.7 | 5.8  | 5.8  | 6   | 5.9  | 5.4 | 5.2  | 4.7 | 5.6 | 5.7  | 5.7  | 5.9 | 5.7  | 5.4 | 5.3  | 4.8 | 32                |
| 34   | 5.2 | 5.3  | 5.3  | 5.4 | 5.3  | 5.2 | 5    | 4.5 | 5   | 5.2  | 5.1  | 5.3 | 5.2  | 5.2 | 5.1  | 4.7 | 34                |
| 36   | 4.7 | 4.8  | 4.8  | 4.9 | 4.8  | 5   | 4.8  | 4.3 | 4.6 | 4.7  | 4.6  | 4.8 | 4.7  | 4.9 | 4.7  | 4.5 | 36                |
| 38   | 4.3 | 4.3  | 4.3  | 4.5 | 4.4  | 4.6 | 4.4  | 4.2 | 4.1 | 4.2  | 4.2  | 4.4 | 4.3  | 4.5 | 4.3  | 4.3 | 38                |
| 40   | 3.9 | 3.9  | 4    | 4.1 | 4    | 4.1 | 4    | 4.1 | 3.7 | 3.8  | 3.8  | 3.9 | 3.9  | 4   | 3.9  | 4.1 | 40                |
| 42   | 3.5 | 3.6  | 3.6  | 3.7 | 3.6  | 3.8 | 3.7  | 3.8 | 3.4 | 3.4  | 3.5  | 3.6 | 3.5  | 3.7 | 3.6  | 3.8 | 42                |
| 44   |     |      | 3.3  | 3.3 | 3.3  | 3.4 | 3.4  | 3.5 | 3.1 | 3.1  | 3.2  | 3.2 | 3.2  | 3.3 | 3.3  | 3.5 | 44                |
| 46   |     |      | 3    | 3   | 3    | 3.1 | 3.1  | 3.3 |     |      | 2.9  | 2.9 | 2.9  | 3   | 3    | 3.2 | 46                |
| 48   |     |      |      |     | 2.7  | 2.8 | 2.8  | 3   |     |      | 2.6  | 2.6 | 2.6  | 2.7 | 2.7  | 2.9 | 48                |
| 50   |     |      |      |     | 2.5  | 2.5 | 2.6  | 2.7 |     |      |      |     | 2.4  | 2.5 | 2.5  | 2.6 | 50                |
| 52   |     |      |      |     |      |     | 2.3  | 2.4 |     |      |      |     | 2.1  | 2.2 | 2.2  | 2.3 | 52                |
| 54   |     |      |      |     |      |     |      |     |     |      |      |     | 2    | 2   | 2.1  |     | 54                |

Note: the capacity values in shade are determined by single line pull or boom strength.

## Load Chart of FJ Configuration

| Load chart -FJ (Rear counterweight 28.6t, Carbody counterweight 11t) 3/4 |     |     |      |     |     |     |      |      |     |     |      |     |     |     |      |     |                   |  |
|--|-----|-----|------|-----|-----|-----|------|------|-----|-----|------|-----|-----|-----|------|-----|-------------------|--|
| R/BL (m)   | 43  |     |      |     |     |     |      |      | 46  |     |      |     |     |     |      |     | R/BL (m)          |  |
| Jib Length (m)   | 9   |     | 13.5 |     | 18  |     | 22.5 |      | 9   |     | 13.5 |     | 18  |     | 22.5 |     | Jib Length (m)    |  |
| Boom to Jib Angle  | 15° | 30° | 15°  | 30° | 15° | 30° | 15°  | 30°  | 15° | 30° | 15°  | 30° | 15° | 30° | 15°  | 30° | Boom to Jib Angle |  |
| 14   | 11  |     |      |     |     |     |      |      |     |     |      |     |     |     |      |     | 14                |  |
| 15   | 11  |     |      |     |     |     |      |      | 11  |     |      |     |     |     |      |     | 15                |  |
| 16   | 11  | 11  | 11   |     |     |     |      |      | 11  |     |      |     |     |     |      |     | 16                |  |
| 18   | 11  | 11  | 11   |     | 10  |     |      |      | 11  | 11  | 11   |     |     |     |      |     | 18                |  |
| 20   | 11  | 11  | 11   | 9.1 | 9.7 |     | 7    |      | 11  | 11  | 11   | 9.1 | 9.6 |     |      |     | 20                |  |
| 22   | 9.7 | 10  | 9.8  | 8.7 | 9   | 6.8 | 6.7  |      | 9.6 | 9.9 | 9.7  | 8.7 | 8.9 |     | 6.8  |     | 22                |  |
| 24   | 8.5 | 8.8 | 8.7  | 8.3 | 8.4 | 6.4 | 6.4  | 5.7  | 8.4 | 8.7 | 8.5  | 8.3 | 8.4 | 6.4 | 6.5  | 5.8 | 24                |  |
| 26   | 7.6 | 7.8 | 7.7  | 7.9 | 7.8 | 6.1 | 6.1  | 5.5  | 7.4 | 7.6 | 7.6  | 7.9 | 7.6 | 6.1 | 6.2  | 5.6 | 26                |  |
| 28   | 6.7 | 6.9 | 6.8  | 7.1 | 6.9 | 5.9 | 5.9  | 5.3  | 6.6 | 6.8 | 6.7  | 7   | 6.8 | 5.9 | 5.9  | 5.4 | 28                |  |
| 30   | 6   | 6.2 | 6.1  | 6.4 | 6.2 | 5.6 | 5.6  | 5.1  | 5.9 | 6.1 | 6    | 6.3 | 6.1 | 5.6 | 5.7  | 5.2 | 30                |  |
| 32   | 5.4 | 5.5 | 5.5  | 5.7 | 5.6 | 5.4 | 5.4  | 4.9  | 5.3 | 5.4 | 5.4  | 5.6 | 5.4 | 5.4 | 5.4  | 4.9 | 32                |  |
| 34   | 4.9 | 5   | 5    | 5.2 | 5   | 5.2 | 5    | 4.8  | 4.7 | 4.9 | 4.8  | 5   | 4.9 | 5.2 | 4.9  | 4.6 | 34                |  |
| 36   | 4.4 | 4.5 | 4.5  | 4.6 | 4.5 | 4.8 | 4.6  | 4.6  | 4.2 | 4.4 | 4.3  | 4.5 | 4.4 | 4.7 | 4.4  | 4.4 | 36                |  |
| 38   | 3.9 | 4   | 4    | 4.2 | 4.1 | 4.3 | 4.1  | 4.4  | 3.8 | 3.9 | 3.9  | 4.1 | 4   | 4.2 | 4    | 4.2 | 38                |  |
| 40   | 3.6 | 3.6 | 3.6  | 3.8 | 3.7 | 3.9 | 3.8  | 4    | 3.4 | 3.5 | 3.5  | 3.7 | 3.6 | 3.8 | 3.7  | 3.9 | 40                |  |
| 42   | 3.2 | 3.3 | 3.3  | 3.4 | 3.3 | 3.5 | 3.5  | 3.6  | 3.1 | 3.2 | 3.2  | 3.3 | 3.2 | 3.4 | 3.4  | 3.6 | 42                |  |
| 44   | 2.9 | 2.9 | 3    | 3.1 | 3   | 3.2 | 3.1  | 3.3  | 2.8 | 2.8 | 2.8  | 3   | 2.9 | 3.1 | 3    | 3.2 | 44                |  |
| 46   | 2.6 | 2.6 | 2.7  | 2.8 | 2.7 | 2.9 | 2.8  | 3    | 2.5 | 2.5 | 2.6  | 2.7 | 2.6 | 2.8 | 2.7  | 2.9 | 46                |  |
| 48   |     |     | 2.4  | 2.5 | 2.4 | 2.6 | 2.5  | 2.7  | 2.2 | 2.3 | 2.3  | 2.4 | 2.3 | 2.5 | 2.4  | 2.6 | 48                |  |
| 50   |     |     | 2.2  | 2.2 | 2.2 | 2.3 | 2.2  | 2.4  |     | 2   | 2    | 2.1 | 2.1 | 2.2 | 2.2  | 2.3 | 50                |  |
| 52   |     |     |      | 2   | 2   | 2.1 | 2    | 2.2  |     |     | 1.8  | 1.9 | 1.9 | 2   | 1.9  | 2.1 | 52                |  |
| 54   |     |     |      |     | 1.8 | 1.8 | 1.8  | 1.95 |     |     | 1.6  | 1.6 | 1.6 | 1.7 | 1.7  | 1.8 | 54                |  |
| 56   |     |     |      |     | 1.6 | 1.6 | 1.6  | 1.7  |     |     |      |     | 1.4 | 1.5 | 1.5  | 1.6 | 56                |  |
| 58   |     |     |      |     |     |     | 1.4  | 1.5  |     |     |      |     | 1.3 | 1.3 | 1.3  | 1.4 | 58                |  |

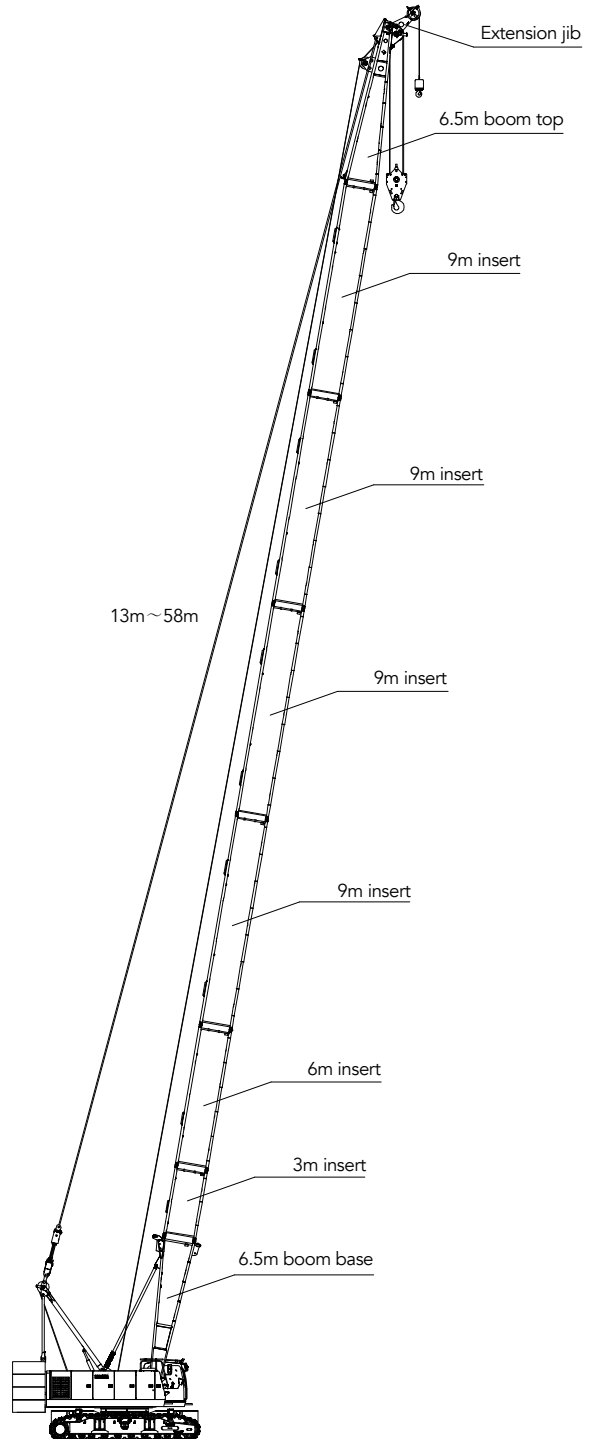
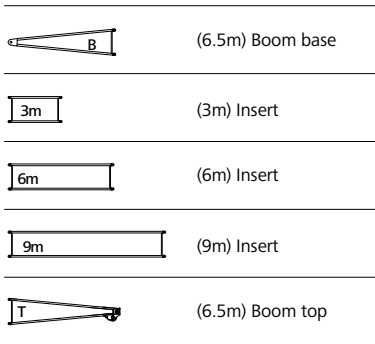
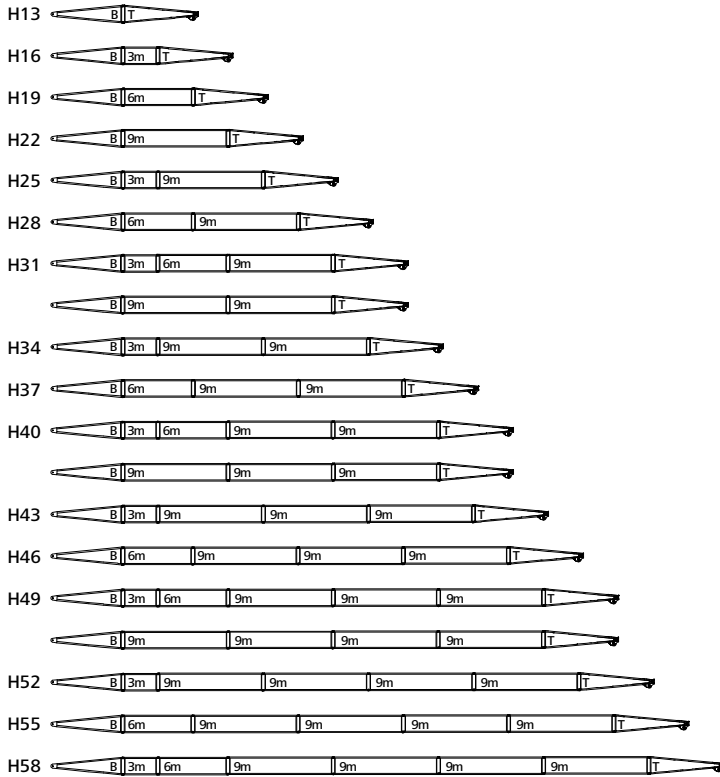
Note: the capacity values in shade are determined by single line pull or boom strength.

## Load Chart of FJ Configuration

| Load chart -FJ (Rear counterweight 28.6t, Carbody counterweight 11t) 4/4 |      |     |      |     |     |     |      |     |      |     |      |     |     |     |      |     |                   |
|--|------|-----|------|-----|-----|-----|------|-----|------|-----|------|-----|-----|-----|------|-----|-------------------|
| R/BL (m)   | 49   |     |      |     |     |     |      |     | 52   |     |      |     |     |     |      |     | R/BL (m)          |
| Jib Length (m)   | 9    |     | 13.5 |     | 18  |     | 22.5 |     | 9    |     | 13.5 |     | 18  |     | 22.5 |     | Jib Length (m)    |
| Boom to Jib Angle  | 15°  | 30° | 15°  | 30° | 15° | 30° | 15°  | 30° | 15°  | 30° | 15°  | 30° | 15° | 30° | 15°  | 30° | Boom to Jib Angle |
| 15   | 11   |     |      |     |     |     |      |     | 11   |     |      |     |     |     |      |     | 15                |
| 16   | 11   |     |      |     |     |     |      |     | 11   |     |      |     |     |     |      |     | 16                |
| 18   | 11   | 11  | 11   |     |     |     |      |     | 11   | 11  | 10.4 |     |     |     |      |     | 18                |
| 20   | 10.9 | 11  | 10.8 | 9.1 | 9   |     |      |     | 10.7 | 11  | 10.1 |     | 8.3 |     |      |     | 20                |
| 22   | 9.4  | 9.7 | 9.6  | 8.7 | 8.7 |     | 6.8  |     | 9.3  | 9.6 | 9.3  | 8.7 | 8.1 |     |      |     | 22                |
| 24   | 8.3  | 8.5 | 8.4  | 8.3 | 8   | 6.4 | 6.5  |     | 8.1  | 8.4 | 8.2  | 8.3 | 7.8 | 6.4 | 6.7  |     | 24                |
| 26   | 7.3  | 7.5 | 7.4  | 7.8 | 7.5 | 6.1 | 6.3  | 5.4 | 7.1  | 7.4 | 7.3  | 7.6 | 7.4 | 6.1 | 6.4  | 5.4 | 26                |
| 28   | 6.5  | 6.7 | 6.6  | 6.9 | 6.7 | 5.9 | 6.1  | 5.2 | 6.3  | 6.5 | 6.4  | 6.8 | 6.5 | 5.9 | 6.1  | 5.1 | 28                |
| 30   | 5.8  | 5.9 | 5.9  | 6.2 | 6   | 5.6 | 5.7  | 5   | 5.6  | 5.8 | 5.7  | 6   | 5.8 | 5.6 | 5.8  | 4.8 | 30                |
| 32   | 5.1  | 5.3 | 5.3  | 5.5 | 5.3 | 5.4 | 5.3  | 4.7 | 5    | 5.1 | 5.1  | 5.4 | 5.2 | 5.4 | 5.2  | 4.6 | 32                |
| 34   | 4.6  | 4.7 | 4.7  | 4.9 | 4.8 | 5.1 | 4.8  | 4.5 | 4.4  | 4.6 | 4.5  | 4.8 | 4.6 | 4.9 | 4.7  | 4.4 | 34                |
| 36   | 4.1  | 4.3 | 4.2  | 4.4 | 4.3 | 4.6 | 4.3  | 4.3 | 3.9  | 4.1 | 4    | 4.3 | 4.1 | 4.4 | 4.2  | 4.2 | 36                |
| 38   | 3.7  | 3.8 | 3.8  | 4   | 3.8 | 4.1 | 3.9  | 4.1 | 3.5  | 3.6 | 3.6  | 3.8 | 3.7 | 4   | 3.8  | 4   | 38                |
| 40   | 3.3  | 3.4 | 3.4  | 3.6 | 3.4 | 3.7 | 3.5  | 3.8 | 3.1  | 3.2 | 3.2  | 3.4 | 3.3 | 3.5 | 3.4  | 3.7 | 40                |
| 42   | 3    | 3.1 | 3    | 3.2 | 3.1 | 3.3 | 3.2  | 3.5 | 2.8  | 2.9 | 2.9  | 3   | 2.9 | 3.2 | 3.1  | 3.4 | 42                |
| 44   | 2.6  | 2.7 | 2.7  | 2.9 | 2.8 | 3   | 2.9  | 3.1 | 2.5  | 2.5 | 2.5  | 2.7 | 2.6 | 2.8 | 2.7  | 3   | 44                |
| 46   | 2.4  | 2.4 | 2.4  | 2.6 | 2.5 | 2.7 | 2.6  | 2.8 | 2.2  | 2.2 | 2.2  | 2.4 | 2.3 | 2.5 | 2.4  | 2.7 | 46                |
| 48   | 2.1  | 2.1 | 2.2  | 2.3 | 2.2 | 2.4 | 2.3  | 2.5 | 1.9  | 2   | 2    | 2.1 | 2   | 2.2 | 2.1  | 2.4 | 48                |
| 50   | 1.9  | 1.9 | 1.9  | 2   | 2   | 2.1 | 2.1  | 2.3 | 1.7  | 1.7 | 1.7  | 1.8 | 1.8 | 1.9 | 1.8  | 2.1 | 50                |
| 52   | 1.6  | 1.7 | 1.7  | 1.8 | 1.7 | 1.9 | 1.8  | 2   | 1.4  | 1.5 | 1.5  | 1.6 | 1.6 | 1.7 | 1.6  | 1.8 | 52                |
| 54   |      |     | 1.5  | 1.5 | 1.5 | 1.6 | 1.6  | 1.8 | 1.2  | 1.3 | 1.3  | 1.4 | 1.3 | 1.5 | 1.4  | 1.6 | 54                |
| 56   |      |     | 1.3  | 1.3 | 1.3 | 1.4 | 1.4  | 1.5 |      |     | 1.1  | 1.2 | 1.1 | 1.3 | 1.2  | 1.4 | 56                |
| 58   |      |     |      |     | 1.1 | 1.2 | 1.2  | 1.3 |      |     |      |     | 1   | 1   | 1    | 1.2 | 58                |

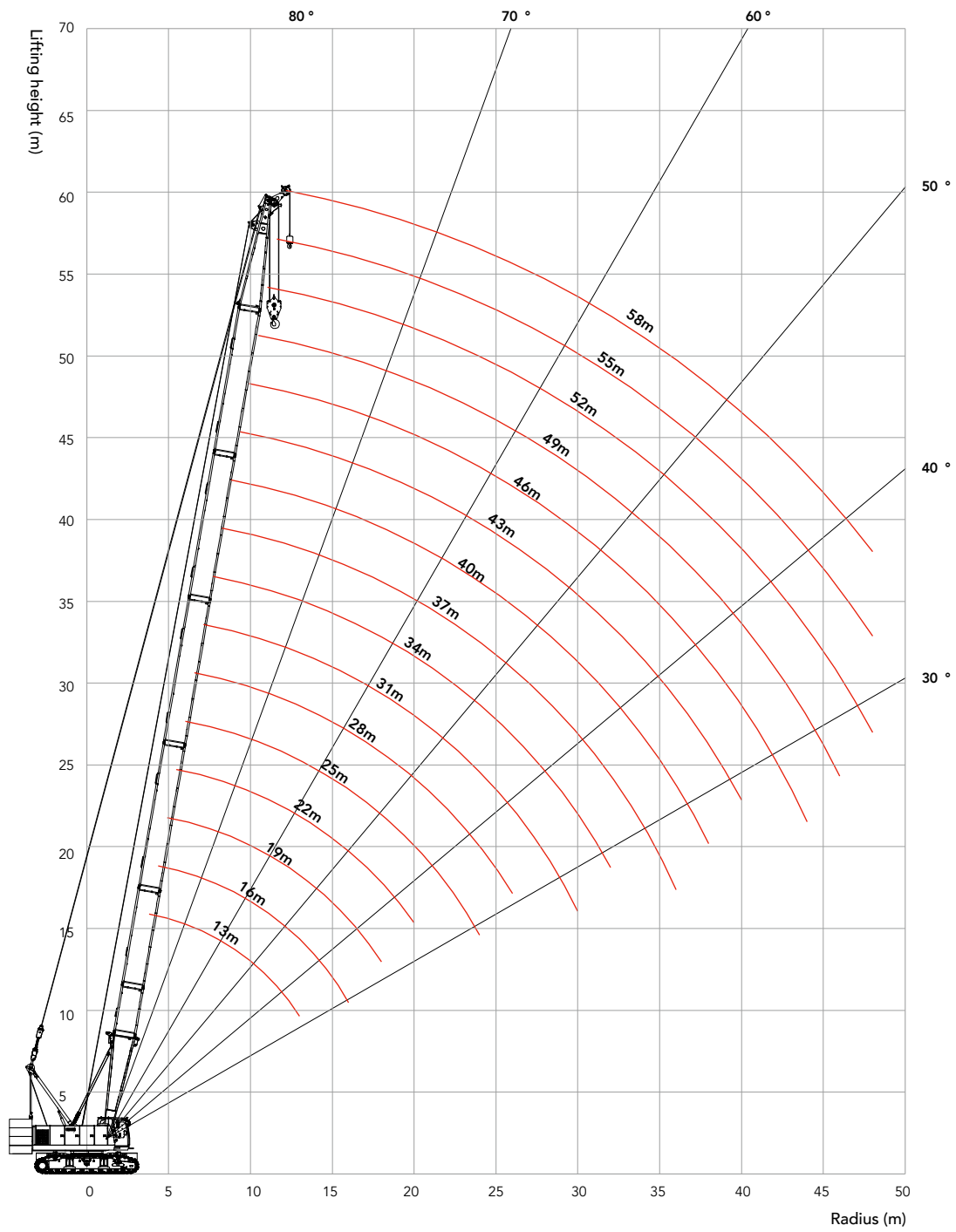
Note: the capacity values in shade are determined by single line pull or boom strength.

### Boom Combination of HC Configuration





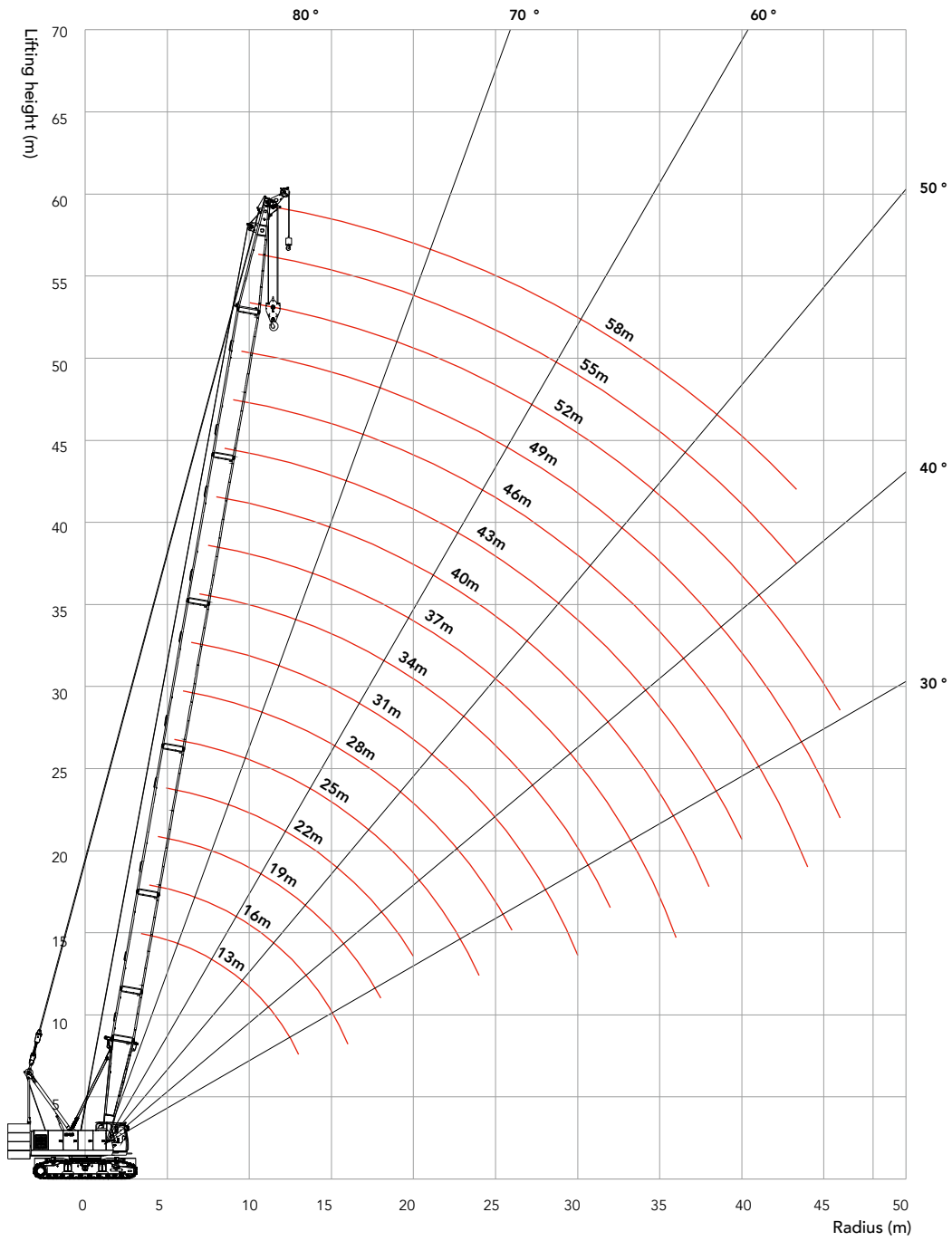
## Working Radius of HC Configuration



### Load Chart of HC Configuration

| Load chart -HC (With aux. hook, Rear counterweight 28.6t, Carbody counterweight 11t) |    |    |    |    |      |      |      |      |      |      |      |      |      |      |      |      |          |
|--|----|----|----|----|------|------|------|------|------|------|------|------|------|------|------|------|----------|
| R/BL (m)   | 13 | 16 | 19 | 22 | 25   | 28   | 31   | 34   | 37   | 40   | 43   | 46   | 49   | 52   | 55   | 58   | R/BL (m) |
| 3.8  | 12 |    |    |    |      |      |      |      |      |      |      |      |      |      |      |      | 3.8      |
| 4  | 12 |    |    |    |      |      |      |      |      |      |      |      |      |      |      |      | 4        |
| 4.5  | 12 | 12 |    |    |      |      |      |      |      |      |      |      |      |      |      |      | 4.5      |
| 5  | 12 | 12 |    |    |      |      |      |      |      |      |      |      |      |      |      |      | 5        |
| 5.5  | 12 | 12 | 12 |    |      |      |      |      |      |      |      |      |      |      |      |      | 5.5      |
| 6  | 12 | 12 | 12 | 12 |      |      |      |      |      |      |      |      |      |      |      |      | 6        |
| 6.5  | 12 | 12 | 12 | 12 | 12   |      |      |      |      |      |      |      |      |      |      |      | 6.5      |
| 7  | 12 | 12 | 12 | 12 | 12   | 12   |      |      |      |      |      |      |      |      |      |      | 7        |
| 7.5  | 12 | 12 | 12 | 12 | 12   | 12   | 12   |      |      |      |      |      |      |      |      |      | 7.5      |
| 8  | 12 | 12 | 12 | 12 | 12   | 12   | 12   | 12   |      |      |      |      |      |      |      |      | 8        |
| 9  | 12 | 12 | 12 | 12 | 12   | 12   | 12   | 12   | 12   | 12   |      |      |      |      |      |      | 9        |
| 10   | 12 | 12 | 12 | 12 | 12   | 12   | 12   | 12   | 12   | 12   | 12   |      |      |      |      |      | 10       |
| 11   | 12 | 12 | 12 | 12 | 12   | 12   | 12   | 12   | 12   | 12   | 12   | 12   |      |      |      |      | 11       |
| 12   | 12 | 12 | 12 | 12 | 12   | 12   | 12   | 12   | 12   | 12   | 12   | 12   | 12   |      |      |      | 12       |
| 13   | 12 | 12 | 12 | 12 | 12   | 12   | 12   | 12   | 12   | 12   | 12   | 12   | 12   | 12   |      |      | 13       |
| 14   |    | 12 | 12 | 12 | 12   | 12   | 12   | 12   | 12   | 12   | 12   | 12   | 12   | 12   | 12   |      | 14       |
| 15   |    | 12 | 12 | 12 | 12   | 12   | 12   | 12   | 12   | 12   | 12   | 12   | 12   | 12   | 12   | 12   | 15       |
| 16   |    | 12 | 12 | 12 | 12   | 12   | 12   | 12   | 12   | 12   | 12   | 12   | 12   | 12   | 12   | 12   | 16       |
| 18   |    |    | 12 | 12 | 12   | 12   | 12   | 12   | 12   | 12   | 12   | 12   | 12   | 12   | 11.9 | 11.7 | 18       |
| 20   |    |    |    | 12 | 11.8 | 11.7 | 11.6 | 11.3 | 11.2 | 11.1 | 10.8 | 10.7 | 10.6 | 10.3 | 10.2 | 10   | 20       |
| 22   |    |    |    |    | 10.4 | 10.3 | 10.1 | 9.9  | 9.8  | 9.7  | 9.4  | 9.3  | 9.2  | 9    | 8.8  | 8.6  | 22       |
| 24   |    |    |    |    | 9.3  | 9.1  | 9    | 8.8  | 8.6  | 8.5  | 8.3  | 8.2  | 8    | 7.8  | 7.7  | 7.5  | 24       |
| 26   |    |    |    |    |      | 8.2  | 8    | 7.8  | 7.7  | 7.6  | 7.3  | 7.2  | 7.1  | 6.9  | 6.7  | 6.5  | 26       |
| 28   |    |    |    |    |      |      | 7.2  | 7    | 6.9  | 6.7  | 6.5  | 6.4  | 6.3  | 6.1  | 5.9  | 5.7  | 28       |
| 30   |    |    |    |    |      |      | 6.5  | 6.3  | 6.2  | 6    | 5.8  | 5.7  | 5.6  | 5.4  | 5.2  | 5    | 30       |
| 32   |    |    |    |    |      |      |      | 5.7  | 5.6  | 5.4  | 5.2  | 5.1  | 5    | 4.8  | 4.6  | 4.4  | 32       |
| 34   |    |    |    |    |      |      |      |      | 5    | 4.9  | 4.7  | 4.6  | 4.4  | 4.2  | 4.1  | 3.9  | 34       |
| 36   |    |    |    |    |      |      |      |      | 4.6  | 4.4  | 4.2  | 4.1  | 4    | 3.8  | 3.6  | 3.4  | 36       |
| 38   |    |    |    |    |      |      |      |      |      | 4    | 3.8  | 3.7  | 3.6  | 3.3  | 3.2  | 3    | 38       |
| 40   |    |    |    |    |      |      |      |      |      |      | 3.4  | 3.3  | 3.2  | 3    | 2.9  | 2.6  | 40       |
| 42   |    |    |    |    |      |      |      |      |      |      |      | 3    | 2.8  | 2.6  | 2.5  | 2.3  | 42       |
| 44   |    |    |    |    |      |      |      |      |      |      |      |      | 2.7  | 2.5  | 2.3  | 2    | 44       |
| 46   |    |    |    |    |      |      |      |      |      |      |      |      |      | 2.3  | 2.1  | 1.9  | 46       |
| 48   |    |    |    |    |      |      |      |      |      |      |      |      |      |      | 1.8  | 1.7  | 48       |

## Working Radius of HC Configuration



### Load Chart of HC Configuration

| Load chart -HC (With main hook, Rear counterweight 28.6t, Carbody counterweight 11t) |      |      |      |      |      |      |      |      |      |      |      |      |      |      |      |      |          |    |
|--|------|------|------|------|------|------|------|------|------|------|------|------|------|------|------|------|----------|----|
| R/BL (m)   | 13   | 16   | 19   | 22   | 25   | 28   | 31   | 34   | 37   | 40   | 43   | 46   | 49   | 52   | 55   | 58   | R/BL (m) |    |
| 3.8  | 99   |      |      |      |      |      |      |      |      |      |      |      |      |      |      |      | 3.8      |    |
| 4  | 89   |      |      |      |      |      |      |      |      |      |      |      |      |      |      |      | 4        |    |
| 4.5  | 83.2 | 81   |      |      |      |      |      |      |      |      |      |      |      |      |      |      | 4.5      |    |
| 5  | 74   | 72   |      |      |      |      |      |      |      |      |      |      |      |      |      |      | 5        |    |
| 5.5  | 68   | 67.8 | 67.2 |      |      |      |      |      |      |      |      |      |      |      |      |      | 5.5      |    |
| 6  | 61.9 | 61.2 | 60.4 | 58.2 |      |      |      |      |      |      |      |      |      |      |      |      | 6        |    |
| 6.5  | 54.6 | 54.1 | 53.6 | 52.8 | 51   |      |      |      |      |      |      |      |      |      |      |      | 6.5      |    |
| 7  | 48.9 | 48.4 | 48   | 47.6 | 46.6 | 45.2 |      |      |      |      |      |      |      |      |      |      | 7        |    |
| 7.5  | 44.1 | 43.7 | 43.3 | 43   | 42.6 | 41.7 | 40.5 |      |      |      |      |      |      |      |      |      | 7.5      |    |
| 8  | 40.2 | 39.8 | 39.5 | 39.2 | 38.8 | 38.5 | 37.6 | 36.5 |      |      |      |      |      |      |      |      | 8        |    |
| 9  | 34.1 | 33.7 | 33.4 | 33.2 | 32.9 | 32.6 | 32.4 | 31.9 | 31.1 | 30.4 |      |      |      |      |      |      | 9        |    |
| 10   | 29.5 | 29.1 | 28.9 | 28.7 | 28.4 | 28.2 | 27.9 | 27.7 | 27.4 | 26.9 | 26.2 |      |      |      |      |      | 10       |    |
| 11   | 25.9 | 25.6 | 25.4 | 25.2 | 24.9 | 24.7 | 24.5 | 24.2 | 24   | 23.8 | 23.5 | 22.9 | 22.4 |      |      |      | 11       |    |
| 12   | 23   | 22.7 | 22.5 | 22.4 | 22.1 | 21.9 | 21.7 | 21.5 | 21.3 | 21.1 | 20.9 | 20.7 | 20.2 | 19.7 |      |      | 12       |    |
| 13   | 20.7 | 20.4 | 20.2 | 20   | 19.8 | 19.6 | 19.4 | 19.2 | 19   | 18.9 | 18.6 | 18.5 | 18.3 | 17.9 | 17.1 | 15   | 13       |    |
| 14   |      | 18.5 | 18.3 | 18.1 | 17.9 | 17.7 | 17.5 | 17.3 | 17.2 | 17   | 16.8 | 16.6 | 16.4 | 16.2 | 15.9 | 14.4 | 14       |    |
| 15   |      | 16.8 | 16.7 | 16.5 | 16.3 | 16.1 | 15.9 | 15.7 | 15.6 | 15.4 | 15.2 | 15   | 14.9 | 14.6 | 14.5 | 13.8 | 15       |    |
| 16   |      | 15.4 | 15.3 | 15.1 | 14.9 | 14.7 | 14.6 | 14.3 | 14.2 | 14   | 13.8 | 13.7 | 13.5 | 13.3 | 13.1 | 12.9 | 16       |    |
| 18   |      |      | 13   | 12.8 | 12.6 | 12.5 | 12.3 | 12.1 | 11.9 | 11.8 | 11.6 | 11.4 | 11.3 | 11.1 | 10.9 | 10.7 | 18       |    |
| 20   |      |      |      | 11.1 | 10.8 | 10.7 | 10.6 | 10.3 | 10.2 | 10.1 | 9.8  | 9.7  | 9.6  | 9.3  | 9.2  | 9    | 20       |    |
| 22   |      |      |      |      | 9.4  | 9.3  | 9.1  | 8.9  | 8.8  | 8.7  | 8.4  | 8.3  | 8.2  | 8    | 7.8  | 7.6  | 22       |    |
| 24   |      |      |      |      | 8.3  | 8.1  | 8    | 7.8  | 7.6  | 7.5  | 7.3  | 7.2  | 7    | 6.8  | 6.7  | 6.5  | 24       |    |
| 26   |      |      |      |      |      | 7.2  | 7    | 6.8  | 6.7  | 6.6  | 6.3  | 6.2  | 6.1  | 5.9  | 5.7  | 5.5  | 26       |    |
| 28   |      |      |      |      |      |      | 6.2  | 6    | 5.9  | 5.7  | 5.5  | 5.4  | 5.3  | 5.1  | 4.9  | 4.7  | 28       |    |
| 30   |      |      |      |      |      |      |      | 5.5  | 5.3  | 5.2  | 5    | 4.8  | 4.7  | 4.6  | 4.4  | 4    | 30       |    |
| 32   |      |      |      |      |      |      |      |      | 4.7  | 4.6  | 4.4  | 4.2  | 4.1  | 4    | 3.8  | 3.6  | 3.4      | 32 |
| 34   |      |      |      |      |      |      |      |      |      | 4    | 3.9  | 3.7  | 3.6  | 3.4  | 3.2  | 3.1  | 2.9      | 34 |
| 36   |      |      |      |      |      |      |      |      |      |      | 3.6  | 3.4  | 3.2  | 3.1  | 3    | 2.8  | 2.6      | 36 |
| 38   |      |      |      |      |      |      |      |      |      |      |      | 3    | 2.8  | 2.7  | 2.6  | 2.3  | 2.2      | 38 |
| 40   |      |      |      |      |      |      |      |      |      |      |      |      | 2.4  | 2.3  | 2.2  | 2    | 1.9      | 40 |
| 42   |      |      |      |      |      |      |      |      |      |      |      |      |      | 2    | 1.8  | 1.6  | 1.5      | 42 |
| 44   |      |      |      |      |      |      |      |      |      |      |      |      |      |      | 1.7  | 1.5  | 1.3      | 44 |
| 46   |      |      |      |      |      |      |      |      |      |      |      |      |      |      |      | 1.3  | 1.1      | 46 |

Note: all the values provided in this material are subject to update without prior notice.



## Zhejiang Sany Equipment Co.,LTD

SANY Crawler Crane Industrial Park, No. 2188 Daishan Road, Wuxing District, Huzhou City,  
Zhejiang Province, P. R. China Zip 313028  
Consulting [sanycrane@sanygroup.com](mailto:sanycrane@sanygroup.com) (Crane BU) / [crd@sany.com.cn](mailto:crd@sany.com.cn) (IHQ)  
After-sales Service 0086-400 6098 318

**Reminder:**

Any change in the technical parameters and configuration due to product modification or upgrade may occur without prior notice.  
The machine in the picture may include additional equipment. This brochure is for reference only, and goods in kind shall prevail.  
Copyright at SANY. No part of this brochure may be copied or used for any purpose without written approval from SANY.

© Edited in July 2024

