

REACHSTACKER
DIESEL PORTFOLIO

SANY

Quality Changes the World



MEETING CHALLENGES WITH EFFICIENCY

RELIABLE. ECONOMICAL. PRODUCTIVE.



**SANY REACHSTACKER
DIESEL PORTFOLIO**

ABOUT US

SANY Europe is part of the SANY Group, a leading global leading manufacturer of construction machinery, port equipment and wind turbines based in Changsha, China.

We always strive to deliver customised products to the national markets, characterised by their high-performance, innovative technology. Thus, each of these models is specially developed for the European market.

With our own steel construction and spreader production, SANY has the world's largest production of reachstackers. Integrated with a powerful Europe-wide dealer network, that competently supports local users with regard to sales, service and maintenance.



SANY



Table of contents

P. 2	Overview reachstacker portfolio
P. 4	Top features
P. 6	Top highlights
P. 10	Technical specifications / Turning radius
P. 12	Dimensions
P. 13	Spreader
P. 14	Axle loads
P. 16	Load diagrams
P. 22	Equipment

FULL POWER – FULL SCOPE

SANY reachstackers master every task in container handling. With their impressive load capacity, long reach and robust design, they are reliable guarantors in the port. Powerful drives, a compact design and sophisticated container positioning during travel make maneuvering easier, even in narrow aisles - ensuring a high handling speed.

Users benefit from the large portfolio of SANY diesel reachstackers. As specialists or all-rounders, the machines are precisely tailored to the respective tasks. In addition to diesel drives, hybrid drives for even greater fuel efficiency and a fully electric reachstacker are also available.



ECONOMICAL

Newly developed efficient drive train achieves significant fuel savings

PRECISE

Precise joystick control and ergonomically arranged controls for productive work

SAFE

Numerous safety systems to support the operator

COMPACT

Clear dimensions for quick maneuvering, even in tight spaces

EFFICIENT

High handling capacity

STABLE

Robust design for maximum service life

CLEVER

Perfectly coordinated hydraulic and electronic system

SIMPLE

Large maintenance flaps on the side of the machine for easy service checks

COMFORT

EXCELLENT OPERATION

The performance of the SANY reachstacker is also evident behind the steering wheel: the cab offers plenty of comfort. This includes air conditioning and the Grammer Actimo XL comfort seat, which guarantees pleasant and fatigue-free sitting thanks to its excellent vibration comfort. The sound insulation of the cab exceeds the requirements of the strictest industry standards and makes the working environment even more comfortable. All machine controls are grouped together on the control console on the right-hand armrest and steering wheel column, making them easily accessible.



EASE OF USE

Precision in the blink of an eye

The multi-function joystick from premium supplier Elobau can be controlled with particular precision, allowing you to work accurately and efficiently in any situation. For example, it enables several hydraulic commands to be issued simultaneously and supports precise control for fast cycle times. The joystick is connected to a safety CAN bus.

Electronic monitoring of the load torque ensures that the limits of the load diagram are adhered to. The angle of the boom and the telescoping with the actual load on the spreader are taken into account. If the limit values are approached, the control system reduces the speed of movement, warns the driver and prevents the load limits from being exceeded.



TESTIMONIAL

TOP CUSTOMER FEEDBACK



„WHAT STOOD OUT PARTICULARLY POSITIVELY IN THE COLLABORATION WITH SANY WAS THEIR OPENNESS TO OUR FINE-TUNING IN ORDER TO ADAPT THE REACHSTACKERS PRECISELY TO OUR NEEDS.“

TESTIMONIAL

Why SSB Cargo AG relies on SANY as a strong partner

„We also opted for the SRSC45G5-P because we had already gained experience with a similar SANY machine at one of our sites. The feedback from our colleagues there was overwhelmingly positive. The large, easy-to-read display is very helpful for keeping an eye on the weight and boom position. The spacious cab was highlighted, as was the reversing camera. It provides a clear image and the distance markings are very accurate, which makes work much easier - a small detail, but one that makes a big difference in everyday use.“

Initially, we had specific customisation requests such as a grease trap and a sun visor for the indicator lights. These were retrofitted quickly and easily. SANY also implemented the front access with handrail without any problems. This makes it easy to get on and off and extends the field of vision, especially in intermodal use. Together with our long-standing local partner, the entire process ran smoothly. The overall package was just right for us.“

Armin Fischer
Terminal Manager – SBB Cargo AG





FLEET MANAGEMENT SYSTEM

360° VIEW ON YOUR MACHINES

MACHINE DATA IN REAL TIME, SAFE AND ON ALL MOBILE DEVICES

With regard to Industry 4.0, machines and processes are intelligently networked with each other. SANY has developed e.VISION (EVI for short) exclusively for the European market. The digital fleet management system allows real-time access to all important information about the machines in use. This optimizes production and logistics processes and makes them even more efficient and significantly more profitable.

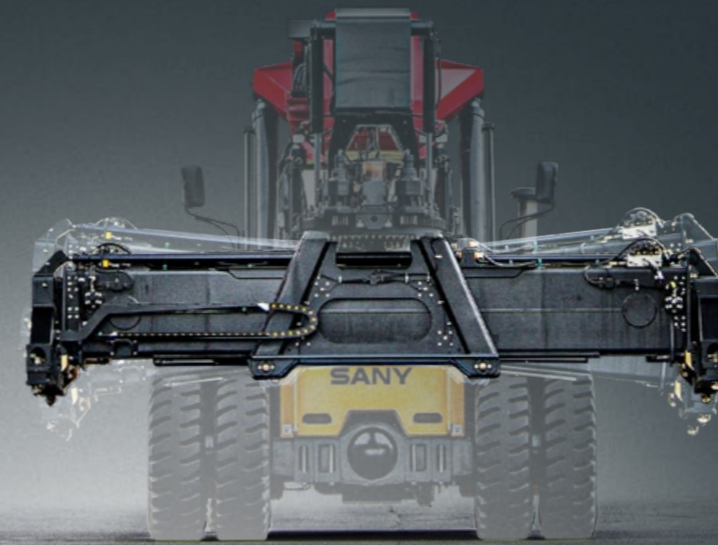


RELIABILITY AND DURABILITY

Central lubrication full of advantages

The functional reliability and service life of reachstackers also depend on reliable maintenance. SANY centralized lubrication systems increase the service life and reduce both lubricant consumption and maintenance costs for the entire fleet. Even hard-to-reach lubrication points are also reliably lubricated for high machine availability and increased productivity.

- + Extended service life of the machine
- + Lower lubricant consumption and lower maintenance costs
- + Less machine downtime and safer working conditions



SAFETY

Power Pile Slope

The terrain is not always as level as you would expect for fast and safe relocation of containers. Then the optional Power Pile Slope function with its additional inclination angle of +/- 6° on the spreader ensures stability and control. This makes the processes on difficult terrain significantly safer and allows time-saving lowering even on sloping truck trailers.

- + Better handling of containers on uneven ground
- + Safer operation on difficult terrain
- + Better setting down on inclined truck trailers

SAFETY

Power Damping

How do you combine safety and high handling speed when moving containers? For example, with the Power Damping function from SANY. With this power damping function, containers are picked up at a controlled speed ratio. This increases safety and makes the processes even more economical thanks to faster circulation cycles.

- + Increased handling volume
- + Safe operation at the location
- + Increased productivity and turnover



SAFETY

Safe and precise steering

All SANY reachstackers are equipped with a modern SANY steering axle. This not only allows precise maneuvering, it also ensures a particularly high level of machine stability. As an operator, you can look forward to lower maintenance costs and greater robustness thanks to the synchronous steering cylinder.

- + Greater precision in operation
- + Lower maintenance costs due to fewer parts
- + Greater robustness thanks to synchronous steering cylinder

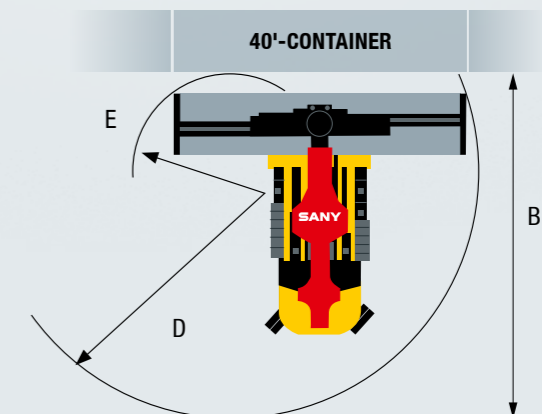
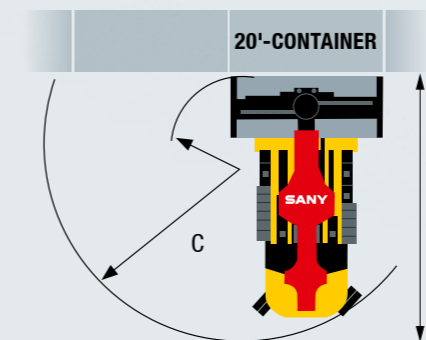


Model		SRSC45G5	SRSC45G5-P	SRSC45H9G5	SRSC4535G5	SRSC4535G5-S
Model extension			Intermodal spreader (Piggyback)	hybrid drive		Support jacks
Characteristics						
Manufacturer		SANY	SANY	SANY	SANY	SANY
Drive		Diesel	Diesel	Diesel	Diesel	Diesel
Load capacity / load	kg	45 000	45 000	45 000	45 000	45 000
Wheelbase	mm	6 000	6 000	6 000	6 500	6 500
Chassis						
Tires		Air	Air	Air	Luft	Luft
Tire size, front		18.00-25	18.00-25	18.00-25	18.00-33	18.00-33
Tire size, rear		18.00-25	18.00-25	18.00-25	18.00-33	18.00-33
Wheels, number front / rear		6	6	6	6	6
Power output						
Travel speed with / without load	km/h	25 / 21	25 / 21	25 / 21	25 / 21	25 / 21
Lifting speed with / without load	mm/s	460 / 260	460 / 260	460 / 260	420 / 220	420 / 220
Lowering speed with / without load	mm/s	600 / 400	600 / 400	600 / 400	500 / 400	500 / 400
Gradeability with / without load	%	46 / 28	42 / 26	46 / 28	43 / 26	42 / 26
Service brake		Wet multi-disc brake	Wet multi-disc brake	Wet multi-disc brake	Wet multi-disc brake	Wet multi-disc brake
Electric motor						
Motor manufacturer / typ		VOLVO TAD1181VE	VOLVO TAD1181VE	VOLVO TAD1181VE	VOLVO TAD1181VE	VOLVO TAD1181VE
Motor power according to ISO 14396	kW	265	265	265	265	265
Motor torque	Nm / rpm	1 785 / 1 400	1 785 / 1 400	1 785 / 1 400	1 785 / 1 400	1 785 / 1 400
Rated speed	rpm	2 100	2 100	2 100	2 100	2 100
Fuel consumption according to VDI cycle	l/h	12-22	12-22	12-22	12-22	12-22
Miscellaneous						
Transmission		TE30	TE30	TE30 with lock-up torque converter	TE30	TE30
Noise level inside the cab	dB	72	72	72	72	72
Noise level outside the cab	dB	107	107	107	107	107
Tank capacity	l	560	560	520	520	520
AdBlue tank	l	45	45	45	45	45

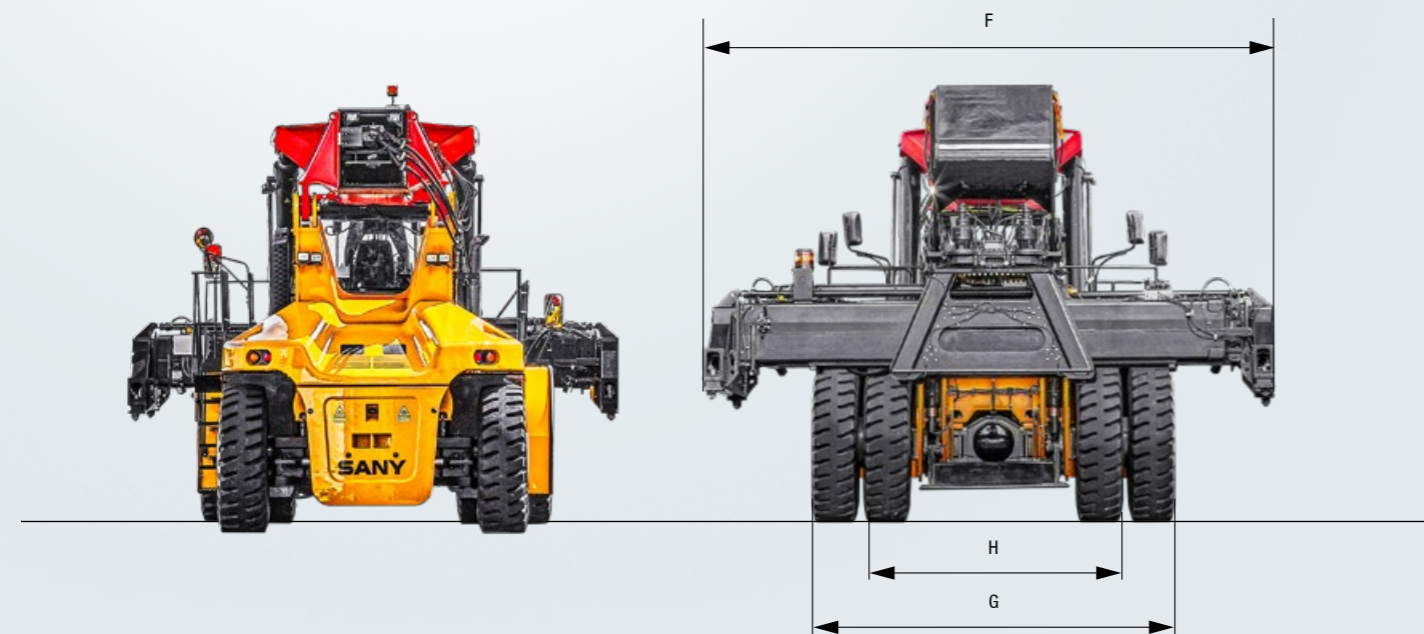
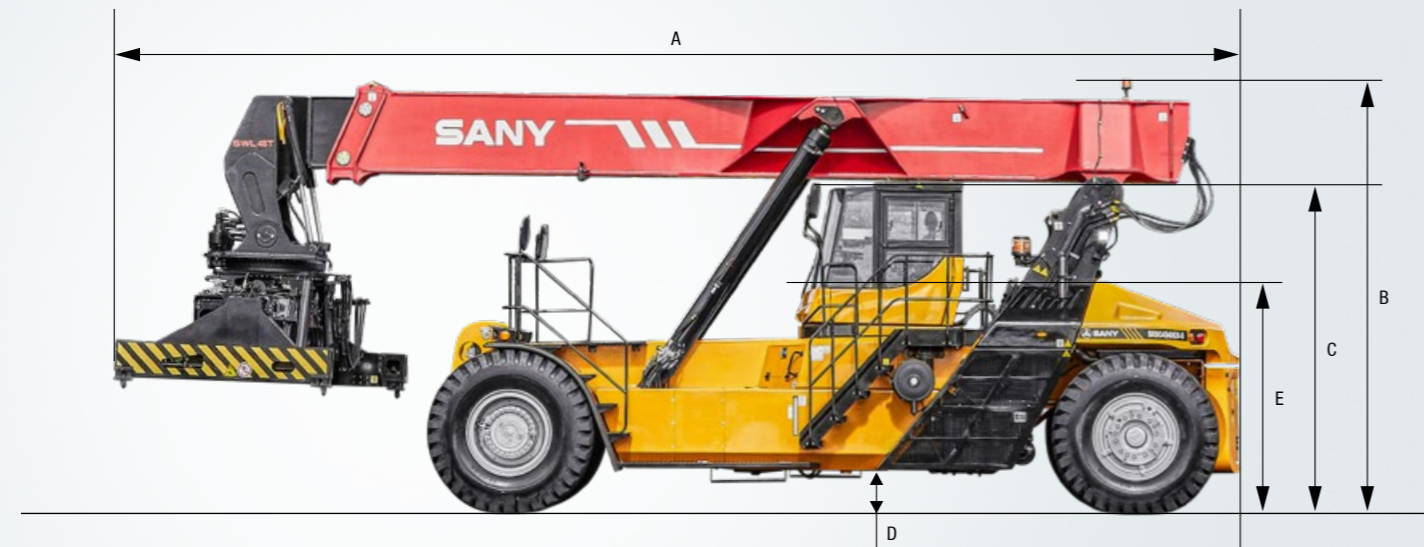
Model		SRSC4535G5-P	SRSC4535G5-SP	SRSC4540G5	SRSC4540G5-S	SRSC4540G5-P	SRSC4540G5-SP	SRSC4540G5-75
Model extension		Intermodal spreader (Piggyback)	Support jacks and intermodal spreader (Piggyback)		Support jacks	Intermodal-Spreader (Piggyback)	Support jacks and intermodal spreader (Piggyback)	7 500 mm wheelbase
Characteristics								
Manufacturer		SANY	SANY	SANY	SANY	SANY	SANY	SANY
Drive		Diesel	Diesel	Diesel	Diesel	Diesel	Diesel	Diesel
Load capacity / load	kg	45 000	45 000	45 000	45 000	45 000	45 000	45 000
Wheelbase	mm	6 500	6 500	7 000	7 000	7 000	7 000	7 500
Chassis								
Tires		Luft	Luft	Air	Air	Luft	Luft	Luft
Tire size, front		18.00-33	18.00-33	18.00-33	18.00-33	18.00-33	18.00-33	18.00-33
Tire size, rear		18.00-33	18.00-33	18.00-33	18.00-33	18.00-33	18.00-33	18.00-33
Wheels, number front / rear		6	6	6	6	6	6	6
Power output								
Travel speed with / without load	km/h	25 / 21	25 / 21	25 / 21	25 / 21	25 / 21	25 / 21	25 / 21
Lifting speed with / without load	mm/s	420 / 220	420 / 220	420 / 220	420 / 220	420 / 220	420 / 220	420 / 220
Lowering speed with / without load	mm/s	500 / 400	500 / 400	500 / 400	500 / 400	500 / 400	500 / 400	500 / 400
Gradeability with / without load	%	40 / 24	39 / 24	41 / 25	40 / 25	38 / 23	38 / 23	38 / 23
Service brake		Wet multi-disc brake	Wet multi-disc brake	Wet multi-disc brake	Wet multi-disc brake	Wet multi-disc brake	Wet multi-disc brake	Wet multi-disc brake
Electric motor								
Motor manufacturer / typ		VOLVO TAD1181VE	VOLVO TAD1181VE	VOLVO TAD1181VE	VOLVO TAD1181VE	VOLVO TAD1181VE	VOLVO TAD1181VE	VOLVO TAD1181VE
Motor power according to ISO 14396	kW	265	265	265	265	265	265	265
Motor torque	Nm / rpm	1 785 / 1 400	1 785 / 1 400	1 785 / 1 400	1 785 / 1 400	1 785 / 1 400	1 785 / 1 400	1 785 / 1 400
Rated speed	rpm	2 100	2 100	2 100	2 100	2 100	2 100	2 100
Fuel consumption according to VDI cycle	l/h	12-22	12-22	12-22	12-22	12-22	12-22	12-22
Miscellaneous								
Transmission		TE30	TE30	TE30	TE30	TE30	TE30	TE30
Noise level inside the cab	dB	72	72	72	72	72	72	72
Noise level outside the cab	dB	107	107	107	107	107	107	107
Tank capacity	l	520	520	520	520	520	520	520
AdBlue tank	l	45	45	45	45	45	45	45

TURNING RADIUS

Model		SRSC45G5 H9	SRSC4535G5	SRSC4540G5	SRSC4540G5-75
A Aisle width with 20' container	mm	11 300	11 600	12 000	12 800
B Aisle width with 40' container	mm	13 600	13 600	13 600	13 600
C Turning radius with 20' container	mm	8 100	8 600	9 100	9 700
D Outside turning radius with 40' container	mm	9 670	9 670	9 820	9 820
E Turning radius inside with 40' container	mm	3 830	3 830	3 700	3 700



Model		SRSC45G5 H9	SRSC4535G5	SRSC4540G5	SRSC4540G5-75
A Total length	mm	11 290	11 850	12 290	12 790
B Max. height	mm	4 900	5 350	5 350	5 350
C Transport height without mast	mm	3 700	3 800	3 800	3 800
D Ground clearance	mm	350	350	350	350
E Seat height	mm	2 504	2 606	2 606	2 606
F Overall width	mm	6 042 – 12 175	6 042 – 12 175	6 042 – 12 175	6 042 – 12 175
G Overall width front	mm	4 188	4 188	4 188	4 188
Overall width rear	mm	2 790	3 380	3 380	3 380
H Front track width	mm	3 033	3 033	3 033	3 033
Rear track width	mm	2 790	2 790	2 790	2 790

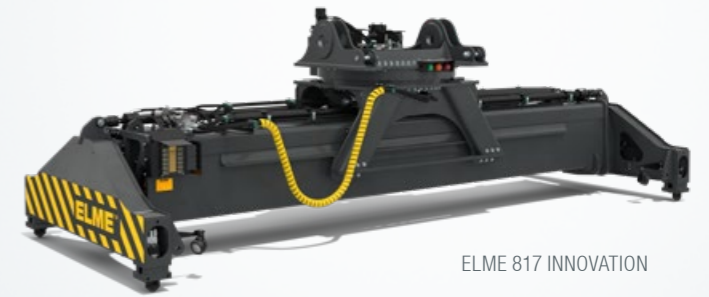


Spreader model		SANY SDJ450H9	SANY SDJ450G5	ELME 817 INN.	ELME 857 INN.
Lifting height max.	mm	15 100	15 100	15 250	14 910
Sideshift	mm	+/- 800	+/- 800	+/- 800	+/- 800
Rotation angle	°	+105 / -195	+105 / -195	+105 / -195	+105 / -195
Mechanical side level compensation	°	-2 / +2	-2 / +2	-2 / +2	-2 / +2
Tilt angle SRSC4535	°	0 – 58	0 – 58	0 – 58	0 – 58
Tilt angle SRSC4540	°	0 – 56,6	0 – 56,6	0 – 56,6	0 – 56,6
Tilt angle SRSC45G5	°	0 – 60	0 – 60	0 – 60	0 – 60
Angle of inclination SRSC45H9G5	°	0 – 60	0 – 60	0 – 60	0 – 60

EFFICIENCY

If you have the choice, you have more options

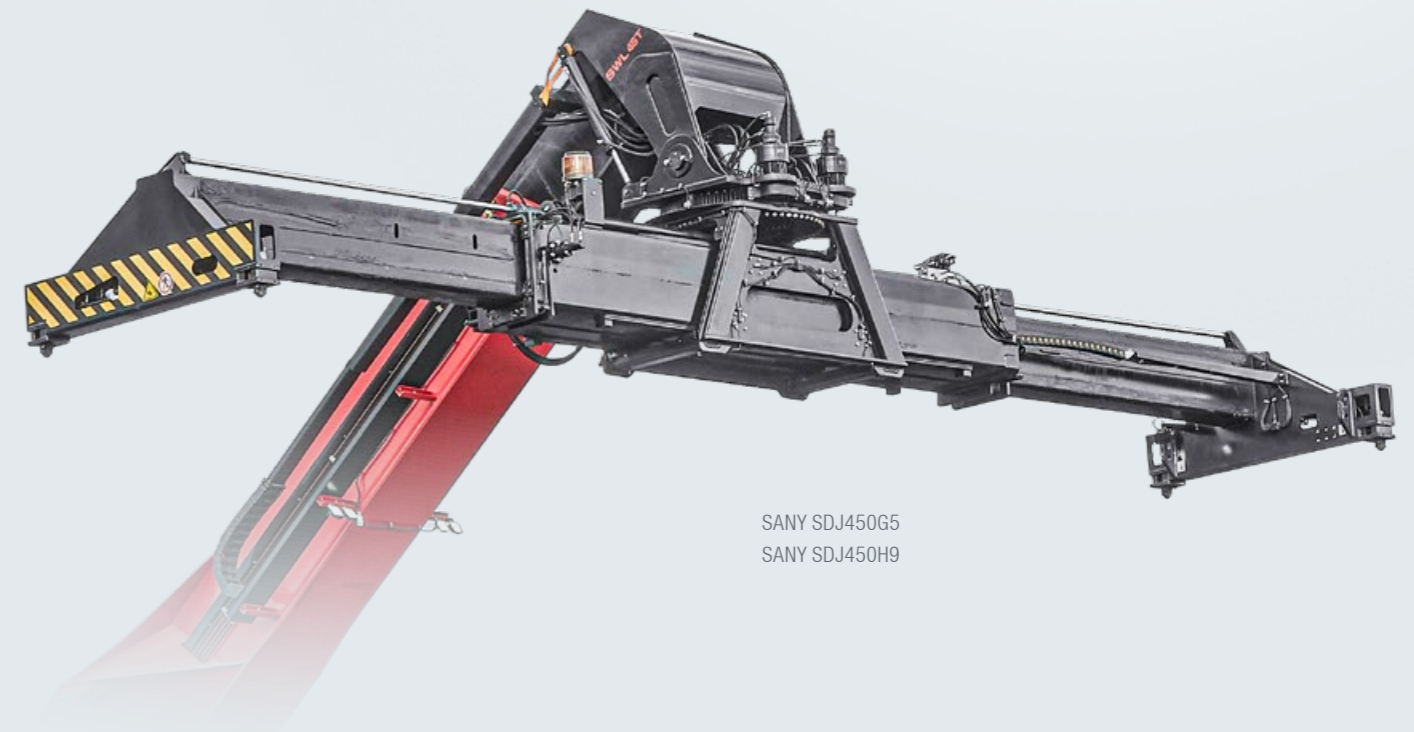
With SANY, you have the choice in the original equipment between the cost-efficient SANY spreader and the proven ELME Spreader. This allows you to tailor your SANY reachstacker even more precisely to your requirements - and to your budget.



ELME 817 INNOVATION



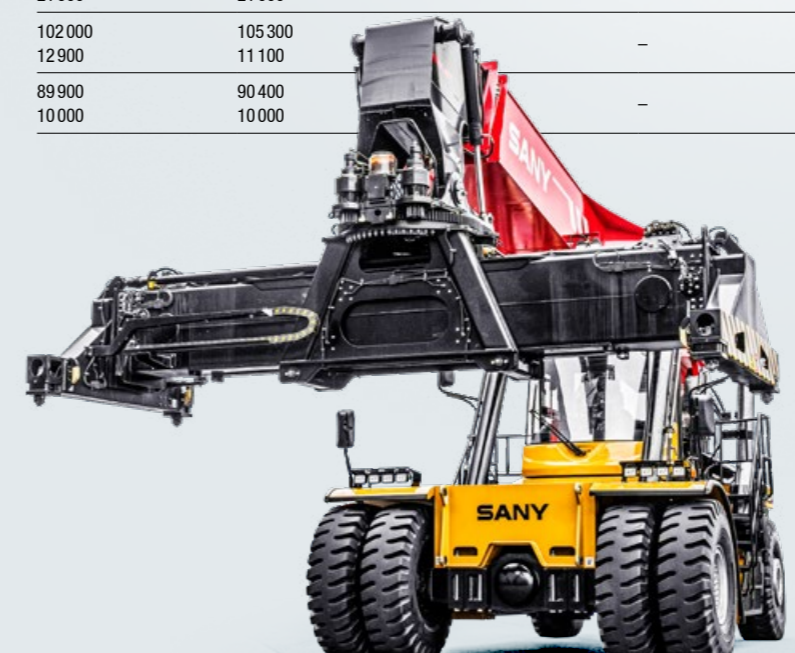
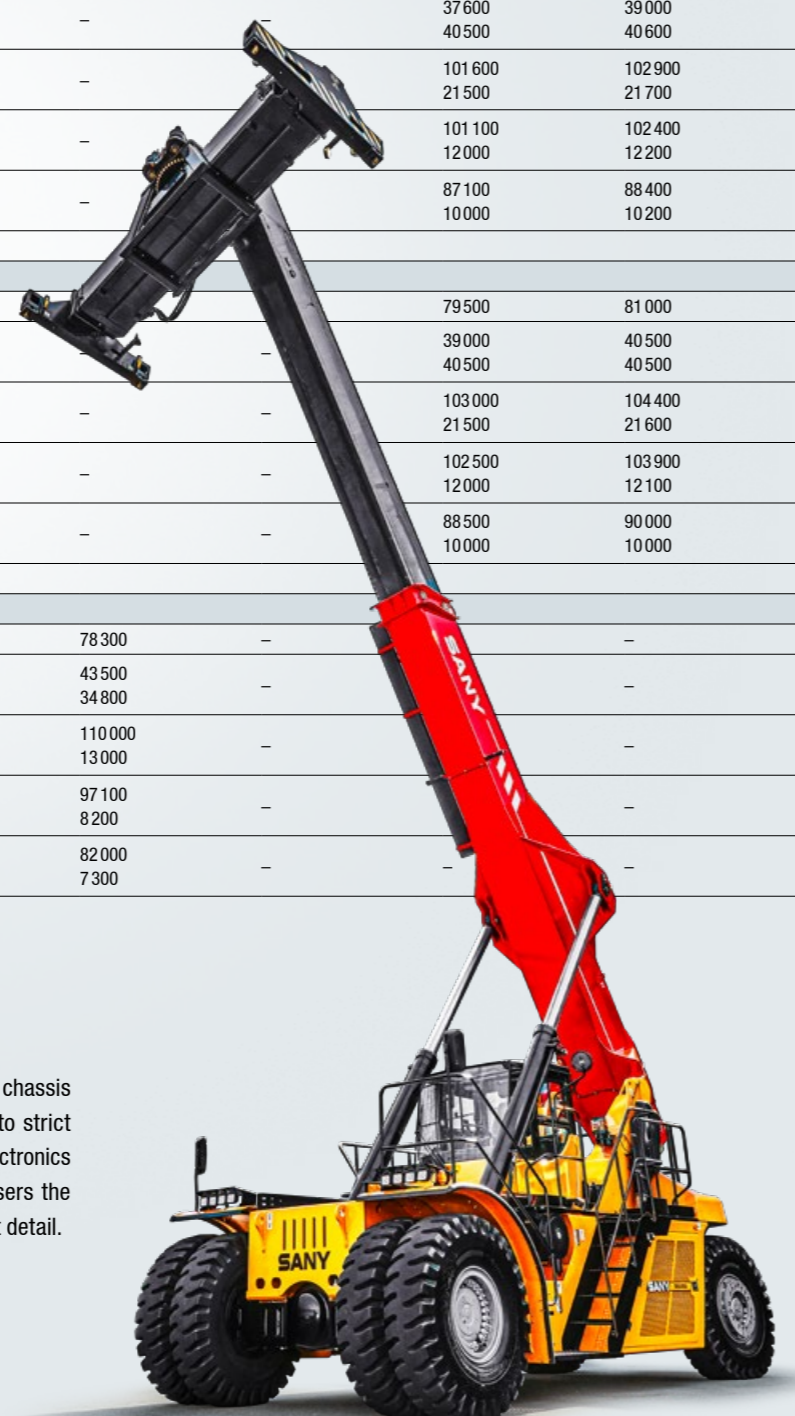
ELME 857 INNOVATION



SANY SDJ450G5
SANY SDJ450H9

Model		SRSC45G5	SRSC45G5-P	SRSC45H9G5	SRSC4535G5	SRSC4535G5-S
SANY Spreader SDJ450H9						
Total weight	kg	-	-	70 500	-	-
Axle load without front load	kg	-	-	33 500	-	-
Axle load without front rear	kg	-	-	37 000	-	-
Axle load with load at L1 front	kg	-	-	99 700	-	-
Axle load with load at L1 rear	kg	-	-	15 800	-	-
Axle load with load at L2 front	kg	-	-	92 500	-	-
Axle load with load at L2 rear	kg	-	-	9 000	-	-
Axle load with load at L3 front	kg	-	-	77 800	-	-
Axle load with load at L3 rear	kg	-	-	8 700	-	-
SANY Spreader SDJ450G5						
Total weight	kg	72 500	-	-	78 100	79 600
Axle load without front load	kg	35 000	-	-	37 600	39 000
Axle load without front rear	kg	37 500	-	-	40 500	40 600
Axle load with load at L1 front	kg	10 150	-	-	101 600	102 900
Axle load with load at L1 rear	kg	16 000	-	-	21 500	21 700
Axle load with load at L2 front	kg	94 000	-	-	101 100	102 400
Axle load with load at L2 rear	kg	9 500	-	-	12 000	12 200
Axle load with load at L3 front	kg	78 300	-	-	87 100	88 400
Axle load with load at L3 rear	kg	9 200	-	-	10 000	10 200
ELME Spreader 817 Innovation						
Total weight	kg	74 000	-	-	79 500	81 000
Axle load without front load	kg	37 000	-	-	39 000	40 500
Axle load without front rear	kg	37 000	-	-	40 500	40 500
Axle load with load at L1 front	kg	103 500	-	-	103 000	104 400
Axle load with load at L1 rear	kg	15 500	-	-	21 500	21 600
Axle load with load at L2 front	kg	96 500	-	-	102 500	103 900
Axle load with load at L2 rear	kg	8 500	-	-	12 000	12 100
Axle load with load at L3 front	kg	81 200	-	-	88 500	90 000
Axle load with load at L3 rear	kg	7 800	-	-	10 000	10 000
ELME Spreader 857 Innovation						
Total weight	kg	-	78 300	-	-	-
Axle load without front load	kg	-	43 500	-	-	-
Axle load without front rear	kg	-	34 800	-	-	-
Axle load with load at L1 front	kg	-	110 000	-	-	-
Axle load with load at L1 rear	kg	-	13 000	-	-	-
Axle load with load at L2 front	kg	-	97 100	-	-	-
Axle load with load at L2 rear	kg	-	8 200	-	-	-
Axle load with load at L3 front	kg	-	82 000	-	-	-
Axle load with load at L3 rear	kg	-	7 300	-	-	-

	SRSC4535G5-P	SRSC4535G5-SP	SRSC4540G5	SRSC4540G5-S	SRSC4540G5-P	SRSC4540G5-SP	SRSC4540G5-75
SANY Spreader SDJ450H9							
-	-	-	-	-	-	-	-
-	-	-	-	-	-	-	-
-	-	-	-	-	-	-	-
-	-	-	-	-	-	-	-
-	-	-	-	-	-	-	-
-	-	-	-	-	-	-	-
SANY Spreader SDJ450G5							
-	-	80 500	82 000	-	-	-	88 000
-	-	36 980	38 500	-	-	-	39 600
-	-	43 520	43 500	-	-	-	48 400
-	-	100 640	102 000	-	-	-	109 700
-	-	24 860	25 000	-	-	-	23 300
-	-	108 070	109 500	-	-	-	109 700
-	-	12 440	12 500	-	-	-	18 300
-	-	93 060	92 400	-	-	-	107 500
-	-	10 440	11 600	-	-	-	10 500
ELME Spreader 817 Innovation							
-	-	81 900	83 500	-	-	-	-
-	-	38 960	40 500	-	-	-	-
-	-	42 940	43 000	-	-	-	-
-	-	102 620	104 000	-	-	-	-
-	-	24 280	24 500	-	-	-	-
-	-	110 420	111 800	-	-	-	-
-	-	11 480	11 700	-	-	-	-
-	-	93 870	95 200	-	-	-	-
-	-	10 030	10 300	-	-	-	-
ELME Spreader 857 Innovation							
83 900	85 400	-	-	86 300	87 800	-	-
42 100	46 100	-	-	45 300	46 500	-	-
41 800	39 300	-	-	41 000	41 300	-	-
107 000	109 400	-	-	108 900	110 000	-	-
21 900	21 000	-	-	22 400	22 800	-	-
102 000	105 300	-	-	111 100	112 400	-	-
12 900	11 100	-	-	11 200	11 400	-	-
89 900	90 400	-	-	92 700	93 800	-	-
10 000	10 000	-	-	10 600	11 000	-	-



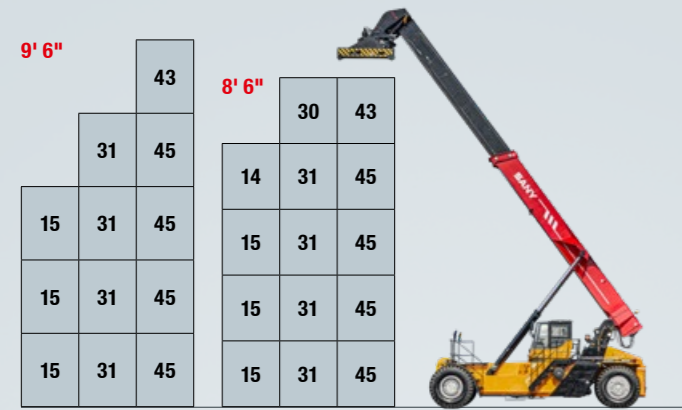
QUALITY
Inner and outer values

All structural components, such as the entire steel construction, the chassis and the outriggers, are manufactured in-house and are subject to strict quality controls. All components in the powertrain, hydraulics and electronics are from renowned European brand manufacturers. This gives users the security of being able to rely on the highest quality down to the last detail.

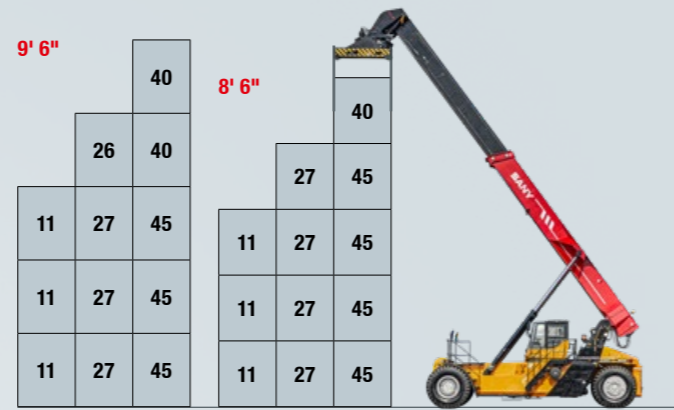
PRODUCTIVITY
Maximize operating times, minimize downtimes

SANY reachstackers prove their reliability in tough practical use worldwide. Within 10 years of use, they achieve more than 50,000 working hours and thus an excellent total operating time. Meanwhile, the downtimes for maintenance, service or repair are extremely low compared to the usable machine hours.

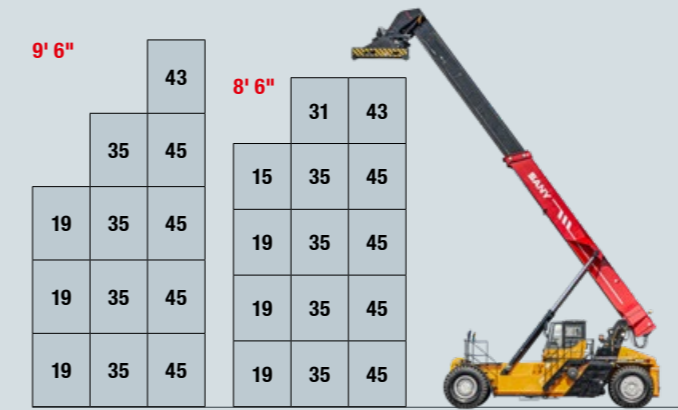
SRSC45G5



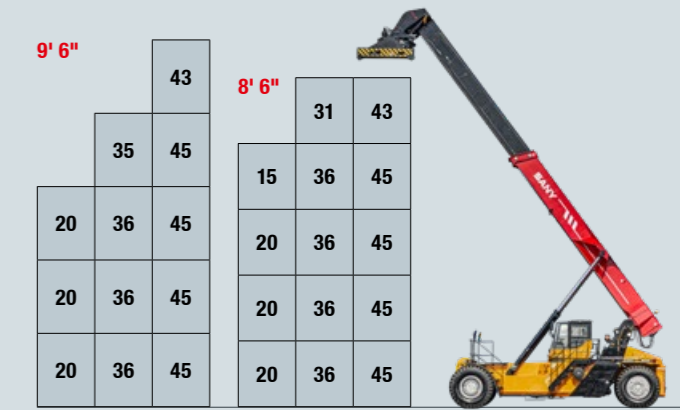
SRSC45G5-P



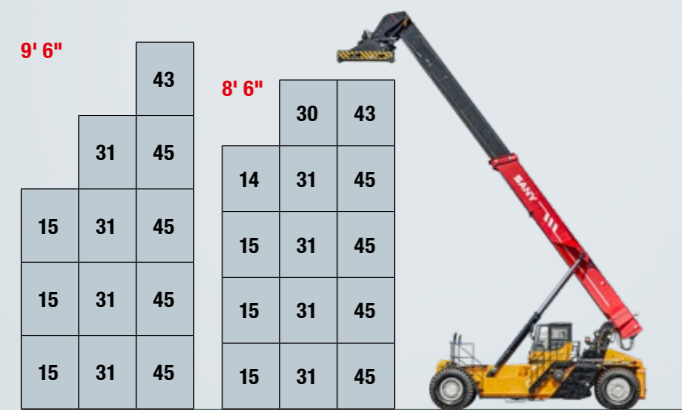
SRSC4535G5-S



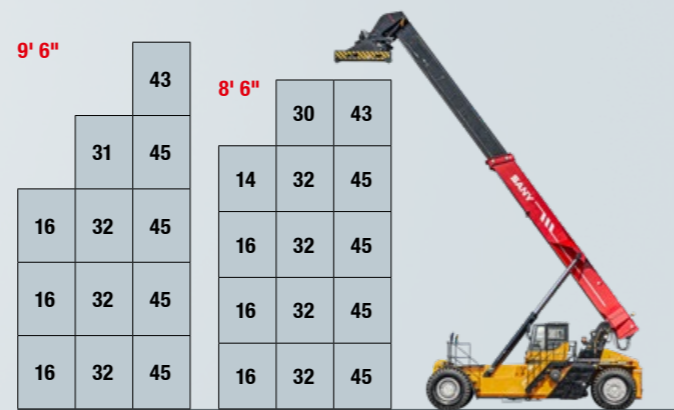
SRSC4535G5-S Counterweight extended



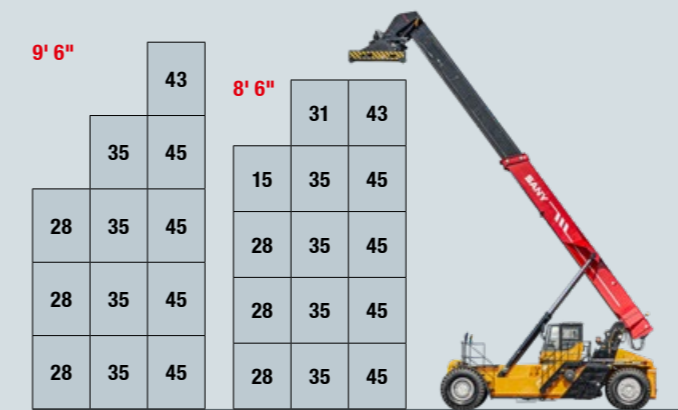
SRSC45H9G5



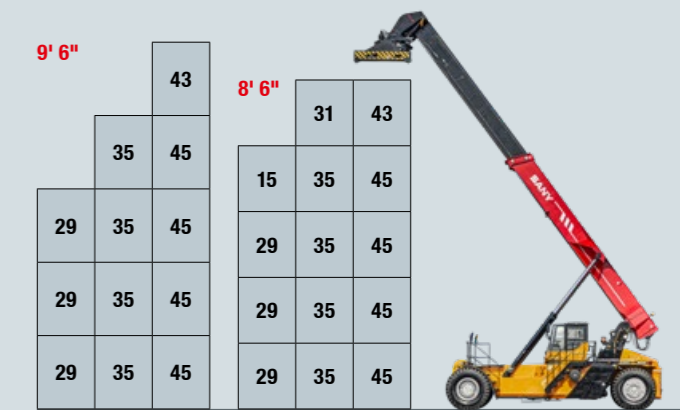
SRSC45H9G5 Counterweight extended



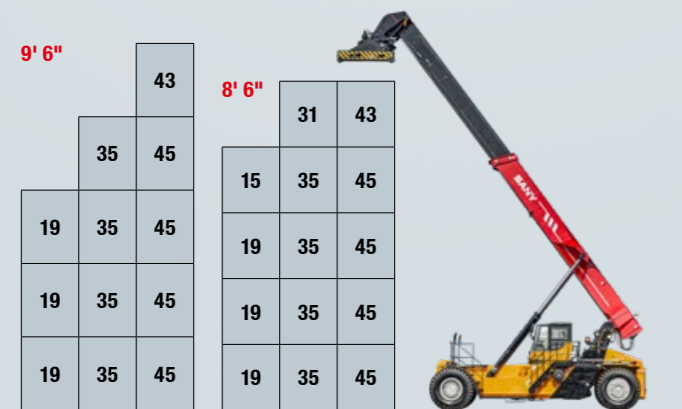
SRSC4535G5-S Lower support jack



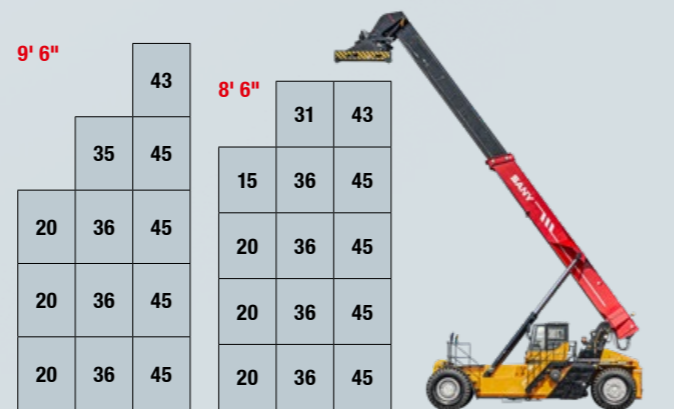
SRSC4535G5-S Support jack and counterweight extended



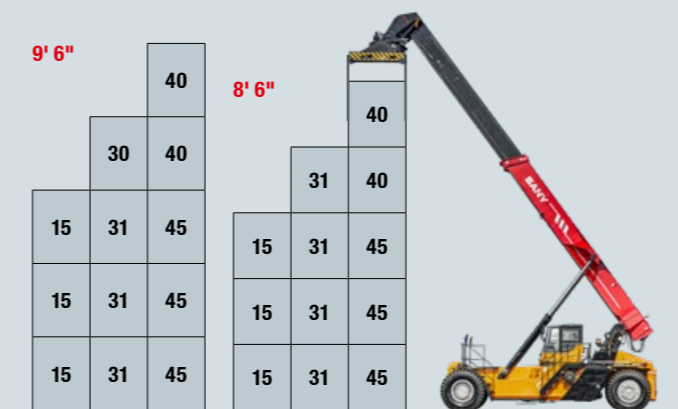
SRSC4535G5



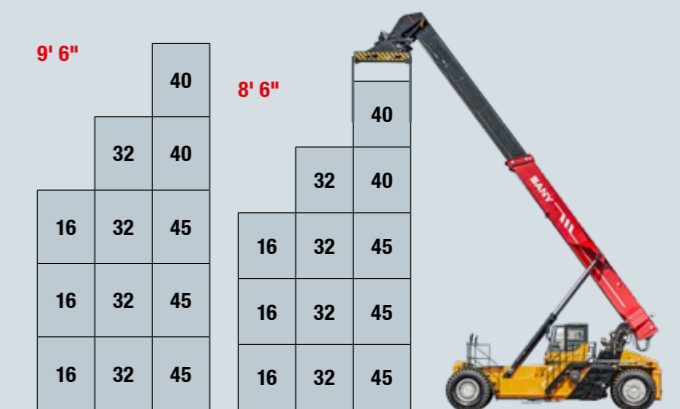
SRSC4535G5 Counterweight extended



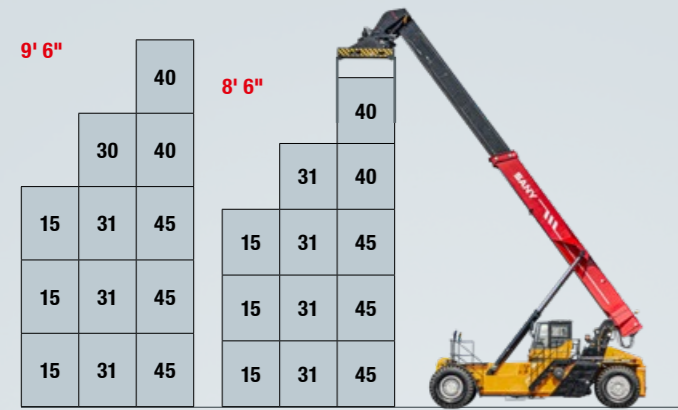
SRSC4535G5-P



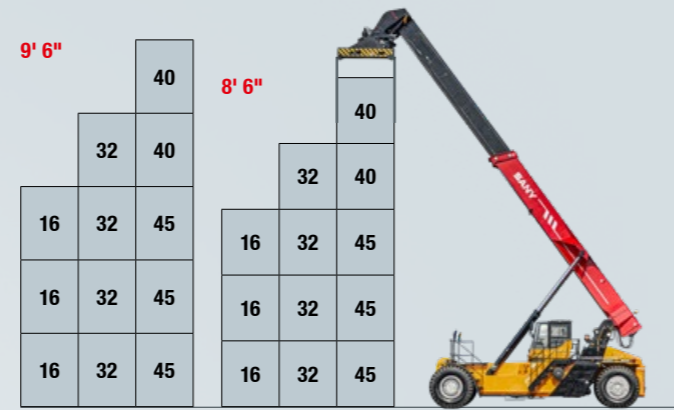
SRSC4535G5-P Counterweight extended



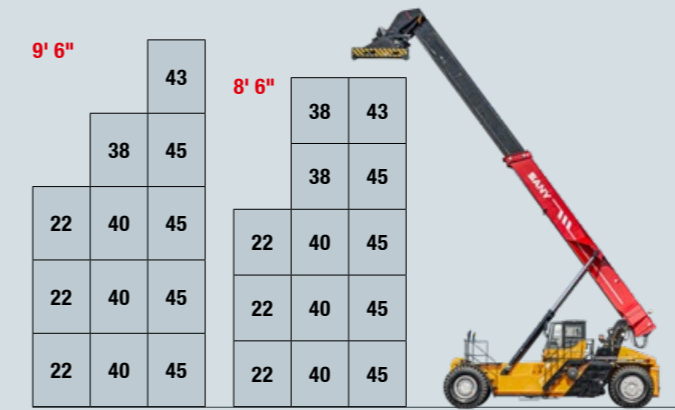
SRSC4535G5-SP



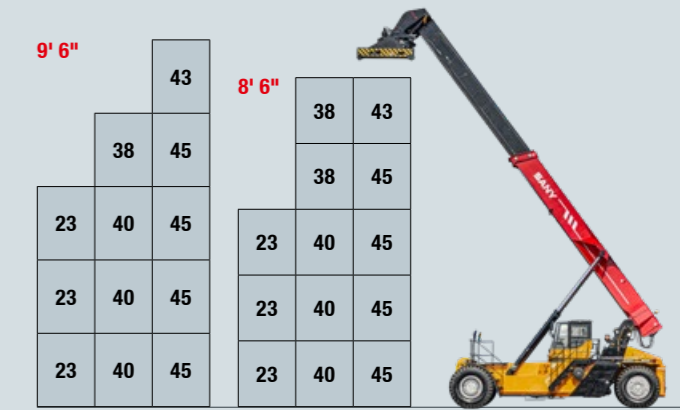
SRSC4535G5-SP Counterweight extended



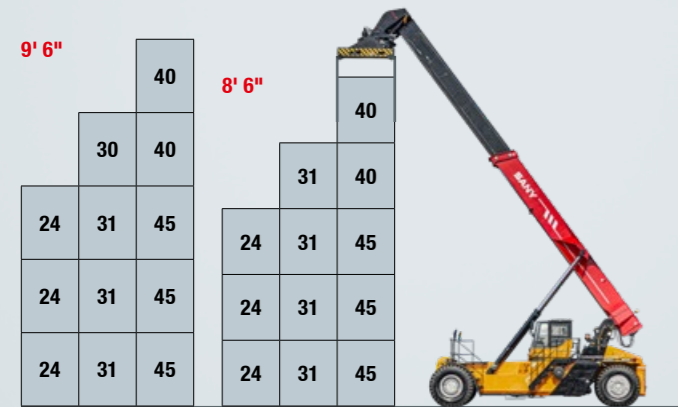
SRSC4540G5-S



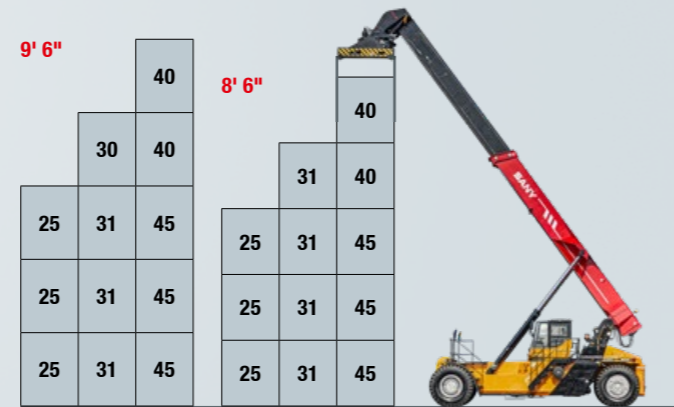
SRSC4540G5-S Counterweight extended



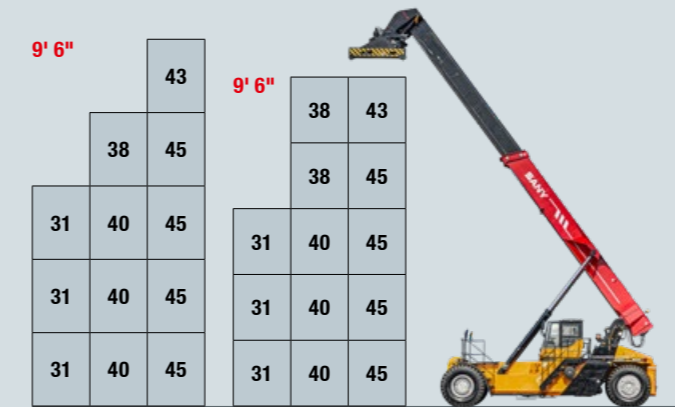
SRSC4535G5-SP Lower support jack



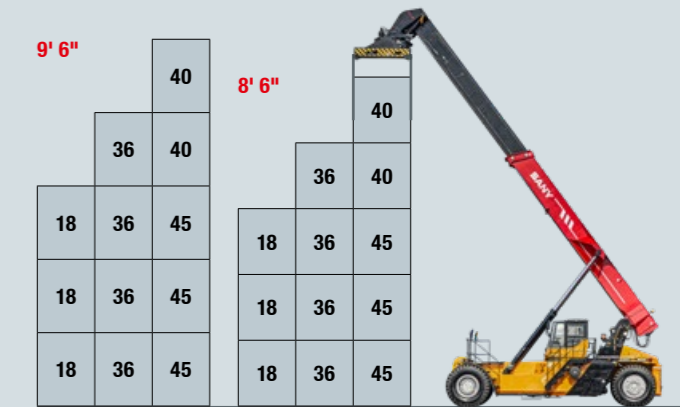
SRSC4535G5-SP Support jack and counterweight extended



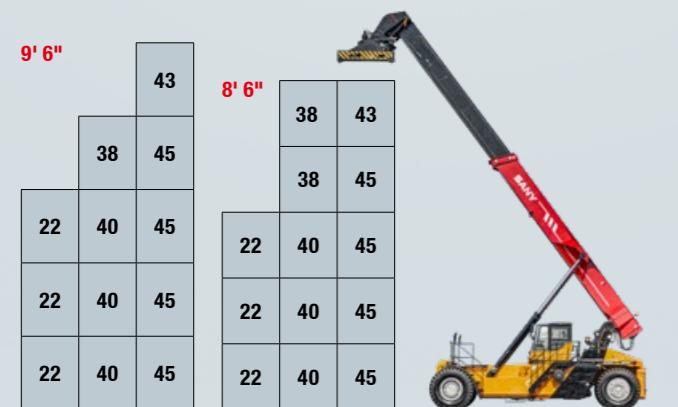
SRSC4540G5-S Lower support jack



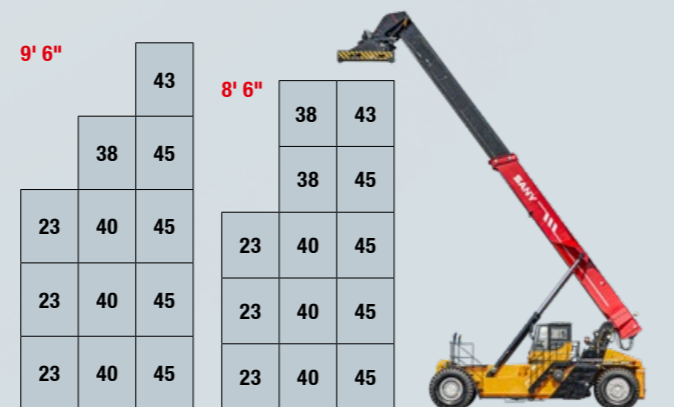
SRSC4540G5-P



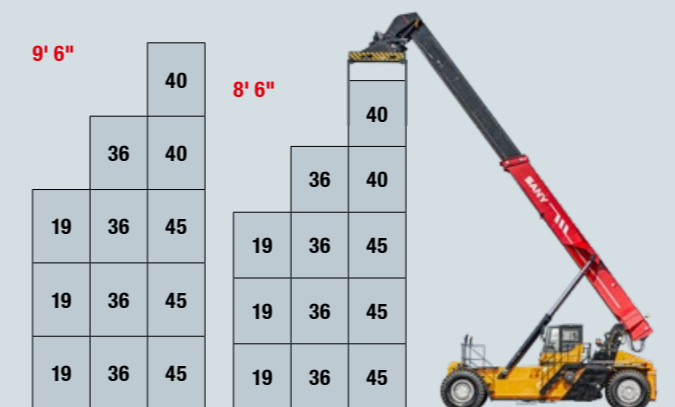
SRSC4540G5



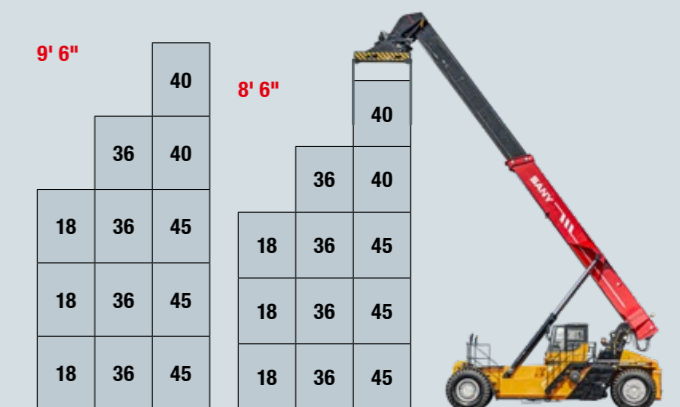
SRSC4540G5 Counterweight extended



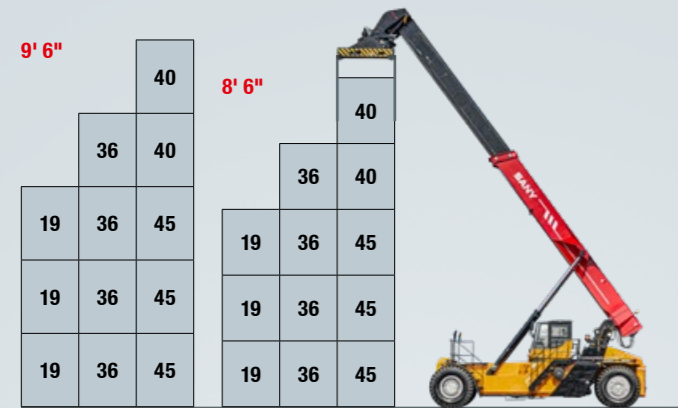
SRSC4540G5-P Counterweight extended



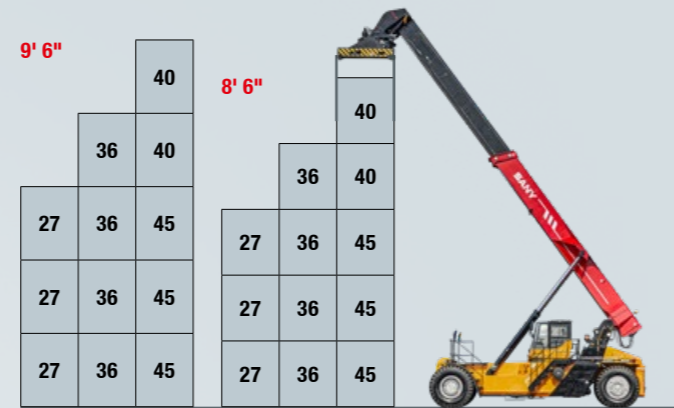
SRSC4540G5-SP



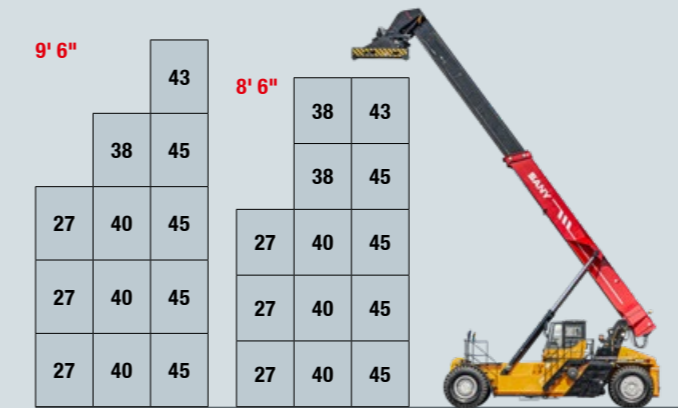
SRSC4540G5-SP Counterweight extended



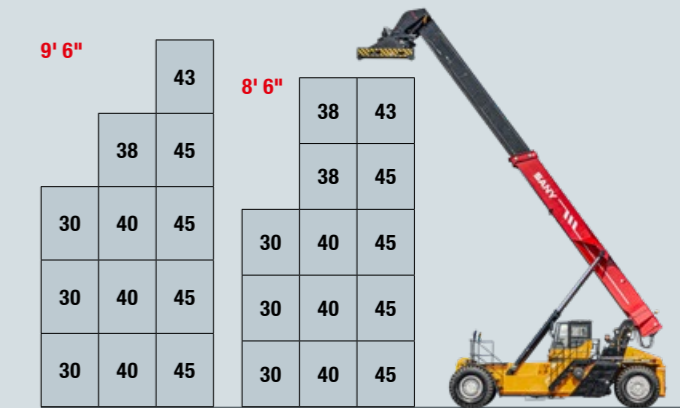
SRSC4540G5-SP Lower support jack



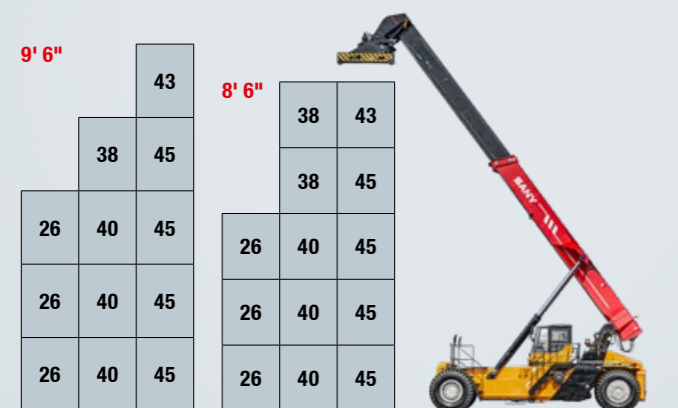
SRSC4540G5-75 Counterweight extended



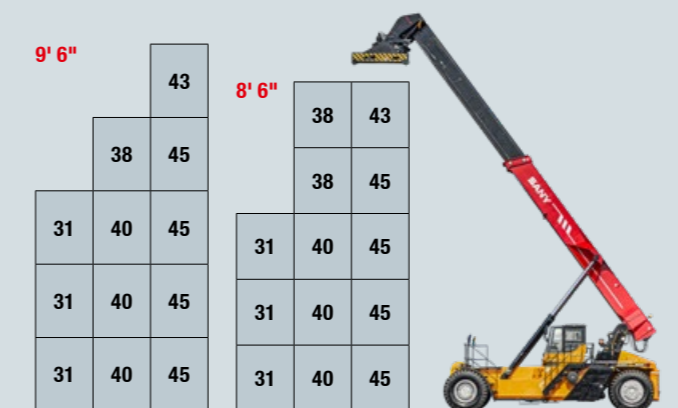
SRSC4540G5-75 Parking brake active



SRSC4540G5-75



SRSC4540G5-75 Counterweight extended / parking brake active



Model	SRSC45G5	SRSC45G5-P	SRSC45H9G5	SRSC4535G5	SRSC4535G5-S	SRSC4535G5-P	SRSC4535G5-SP	SRSC4540G5	SRSC4540G5-S	SRSC4540G5-P	SRSC4540G5-SP	SRSC4540G5-75
CABIN												
Grammer Actimo driver's seat, mechanical suspension	●	●	●	●	●	●	●	●	●	●	●	●
Grammer Actimo driver's seat, air suspension	●	●	●	●	●	●	●	●	●	●	●	●
Adjustable swivel steering column	●	●	●	●	●	●	●	●	●	●	●	●
Main display 7-inch with color display	●	●	●	●	●	●	●	●	●	●	●	●
Additional display for spreader 3.5-inch with color display	●	●	●	●	●	●	●	●	●	●	●	●
Rear view camera display 5-inch with color display	●	●	●	●	●	●	●	●	●	●	●	●
Fire extinguisher	●	●	●	●	●	●	●	●	●	●	●	●
Air conditioning	●	●	●	●	●	●	●	●	●	●	●	●
Passenger seat	●	●	●	●	●	●	●	●	●	●	●	●
SAFETY												
Rear distance sensors, visual and acoustic output	●	●	●	●	●	●	●	●	●	●	●	●
Safety package in the spreader for twistlock monitoring and control, telescoping release with open twistlocks	●	●	●	●	●	●	●	●	●	●	●	●
Joystick control with CAN-Safety	●	●	●	●	●	●	●	●	●	●	●	●
Automatic parking brake	●	●	●	●	●	●	●	●	●	●	●	●
Automatically activated speed limits	●	●	●	●	●	●	●	●	●	●	●	●
360° camera system with multifunctional display	●	●	●	●	●	●	●	●	●	●	●	●
Reversing camera	●	●	●	●	●	●	●	●	●	●	●	●
Tire pressure monitoring	●	●	●	●	●	●	●	●	●	●	●	●
OTHER												
Support legs/support jack for 9 t additional lifting capacity	●	●	●	●	●	●	●	●	●	●	●	●
Movable rear weight for 1 t additional lifting capacity	●	●	●	●	●	●	●	●	●	●	●	●
Various parking heaters	●	●	●	●	●	●	●	●	●	●	●	●
Automatic central lubrication system	●	●	●	●	●	●	●	●	●	●	●	●
SPREADER												
SANY SDJ450H9, top lift for 20- and 40-foot ISO containers, with twistlock display	●	●	●	●	●	●	●	●	●	●	●	●
ELME 817 Innovation	●	●	●	●	●	●	●	●	●	●	●	●
Automatic telescoping system	●	●	●	●	●	●	●	●	●	●	●	●
Pendulum damping cylinder	●	●	●	●	●	●	●	●	●	●	●	●
+/- 2° mechanical side slope compensation	●	●	●	●	●	●	●	●	●	●	●	●
-195°/+105° rotation angle, +/-30° rotation limitation with cab in front position	●	●	●	●	●	●	●	●	●	●	●	●
ELME 857 Innovation intermodal spreader, possible options: 30-foot fence, power pile slope, over-height legs, spreader camera, twistlock cameras, soft landing	●	●	●	●	●	●	●	●	●	●	●	●
LIGHTING												
8 LED front headlights: low beam, high beam	●	●	●	●	●	●	●	●	●	●	●	●
4 LED headlights on the boom	●	●	●	●	●	●	●	●	●	●	●	●
2 LED headlights on the spreader	●	●	●	●	●	●	●	●	●	●	●	●
4 LED headlights for ambient lighting to the side and rear	●	●	●	●	●	●	●	●	●	●	●	●
LED rotating beacon, marker lights, brake light, indicators	●	●	●	●	●	●	●	●	●	●	●	●
Further LED headlights, maintenance lamp, cab access light, reading light	●	●	●	●	●	●	●	●	●	●	●	●
ELECTRONICS												
Fully automatic powershift transmission with torque converter	●	●	●	●	●	●	●	●	●	●	●	●
Automatic stop at idling speed, automatic engine speed adjustment	●	●	●	●	●	●	●	●	●	●	●	●
Multiple CAN bus systems, onboard diagnostics	●	●	●	●	●	●	●	●	●	●	●	●
Battery disconnect switch, safety devices for correct machine operation, seat contact switch, filter clogging indicator	●	●	●	●	●	●	●	●	●	●	●	●

Standard equipment ● Special option ●

Not all products are available on all markets. As part of our continuous improvement process, we reserve the right to change specifications and designs without prior notice. The illustrations may contain additional options.. Please contact your dealer directly if you have any questions.

SANY

Quality Changes the World

SANY EUROPE GmbH

Sany Allee 1
D-50181 Bedburg, Germany
fon +49 2272 90531 100
fax +49 2272 90531 109
info@sanyeurope.com
www.sanyeurope.com

