

STH625E

**SANY**

Quality Changes the World



# MORE FEATURES, MORE POSSIBILITIES

PERFORMANCE AND EFFICIENCY  
ON THE HIGHEST LEVEL

Compact, efficient, high-powered fully electrical telehandler. The STH625E delivers less noise, less vibration and less pollution. Compact dimension, is perfect for working indoors or in other enclosed spaces urban or construction.

## FULLY ELECTRICAL COMPACT TELEHANDLER STH625E

Operating mass  
**5,000 kg**  
Battery size, Lithium-ion  
**34 kWh**  
Hydraulic power  
**32 kW**  
Working hours  
**8-Hrs**

### PROVEN TECHNOLOGY, NEW ENERGY

#### MAIN FEATURES

Lifting height	6 Meters	Battery voltage	347V / 96AH	Travelling speed	20 kph	Turning radius	3300 mm
Overall width	1850 mm	Driving power	32 kW	Height over cab	1920 mm	Capacity	2,500 kg

#### OPERATING COMFORT/CAB

- Ten-inch touchscreen display and encoder navigation
- Heater and air conditioning\*
- Radio with Bluetooth and microphone
- Adjustable seat with suspension
- 12 V power socket
- Sunblind, roof and front screen
- Heated rear screen
- Front, roof and rear wiper and washers
- Armrest with storage and USB charger
- Cup and bottle holders
- Fully adjustable steering column
- Intuitive keypad functions (all backlit)
- EVI Telematics

#### WORKING LIGHTS

- 7 x LED Working lights on cab and boom
- Full LED road lights
- Amber flashing beacon

#### WORK EQUIPMENT

- Standard Sany Fast Fit carriage with 1200 mm forks
- Manitou carriage with fork frame (optional)
- On board charger
- External 3 phase fast charge: optional
- Three steering modes: 4WS, 2WS and crab
- Fully proportional joystick
- Auxiliary hydraulic venting from cab

#### SAFETY

- CE / UKCA-certified
- ROPS ISO:3471:2008 and FOPS ISO:3449:2005
- Screen and roof guard (optional)
- Reversing alarm
- Hi-viz seatbelt
- Integrated reversing camera and distance sensor
- Seat switch and green „ready“ beacon
- Load weight monitoring
- Load moment Indicator display



### Absolute reliability – for peace of mind!

SANY's telehandler comes with 3 years, 3,000hrs warranty\* gives you the assurance that you can fully count on you equipment.

STH265e CATL battery comes with 5 years or 10,000hrs warranty period.

\* With participating partners

# CHARGE ANYWHERE WITH ANY POWER SOCKET

SANY PREMIUM PORTABLE CHARGER –  
4 SOCKET ADAPTER PLUGS – 230V / 370V AC



## Electric Technology

SANY's electric telehandler offers significant operational benefits:

- + No service or diesel filters to replace
- + Easy and quick battery charging
- + Low noise and vibration levels
- + Endless applications and use

## Energy Recovery

Regenerative braking and harnessing boom lowering forces.

SANY's E-POWER energy recovery system captures up to 15% power ensuring the STH625e is efficient and more productive for longer.



## PERFORMANCE PARAMETERS

Maximum lift capacity	kg	2500
Lift capacity at maximum height	kg	2000
Lift capacity at maximum reach	kg	800
Lift height	mm	6000
Maximum forward reach	mm	3350
Carriage crowd angle	°	12
Carriage dump angle	°	117
Frame levelling +/-	°	NA
Outside turning radius (4WS)	mm	3300
Auxiliary hydraulic flow	l/min	80
Auxiliary hydraulic pressure	Mpa	270
Noise at driving position	Lpa	68
Noise to environment	Lwa	76

## BOOM PARAMETERS

Boom (raise/lower)	sec	9.4/6.7
Boom (extend/retract)	sec	9.6/6

## TYRES

Type/size		12-16.5
-----------	--	---------

## WORKING POWER INFORMATION

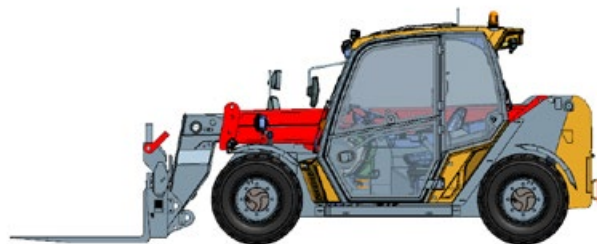
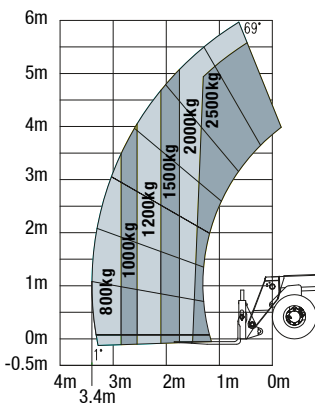
Battery nominal voltage	V	347 / 96AH
Battery technology		LITHIUM-ION
Battery energy	kWh	34
Recharge hours rapid	H	2
Recharge hours standard	H	8
Recharge voltage	V	220/370
Driving motor power	kW	32

## SERVICE REFILL CAPACITIES

Hydraulic system	ltr	70
------------------	-----	----

## CABIN

Cabin is ROPS & FOPS tested & conforms to IOS 3471/3449



## TRANSMISSION

Transmission type		Electrical
Transmission brand		Dana 301
Transmission motor		Inovance
Driving Power	kW	32
Axles		Dana 211
Number of forward gears		2
Number of Reverse gears		2
Max. travel speed	kph	20
Parking brake		SAHR
Service brake		Oil-immersed multi-discs

## HYDRAULIC SYSTEM

Hydraulic pump type		Gear pump
Hydraulic motor		Inovance
Hydraulic power	kW	32
Hydraulic Pump		Cassapa
Hydraulic Manifold		Husco
System pressure	bar	270
Hydraulic flow	l/min	80

## DIMENSIONS

Length to front of carriage	mm	4000
Overall width	mm	1850
Height over cab without beacon	mm	1920
Height over cab with beacon	mm	2010
Wheelbase	mm	2390
Overall cabin width	mm	960
Ground clearance	mm	250
Turning radius over tyres	mm	3300

## POINT LOADS

### Machine loaded with models maximum capacity

Load per front tyre	3260 kg
Load per rear tyre	490 kg

### Machine unloaded with boom in horizontal travel position

Load per front tyre	1200 kg
Load per rear tyre	1300 kg