

Contact: SANY Europe GmbH
Marketing Manager Europe
Sany Avenue 1
D-50181 Bedburg

Phone: +49 151 53103740
e-mail: Nina.Ortmann@sanyeurope.com

Press release no: 2025-1

Date: 14.02.2025

Author: Nina
Ortmann

SANY with a wide range of cranes for the DACH region at bauma 2025

Work efficiently and emission-free as required with SANY cranes

Bedburg, February 2025 - Since 2024, SANY has also been represented with its cranes product range in the DACH region, which is a very challenging market. At this year's bauma in Munich - from Monday, 7 April to Sunday, 13 April - the company will be presenting an all-terrain crane, an all-terrain crane, a fully electric crawler crane and a mobile power bank that ensures autonomy and flexibility in the use of electric machines. The impressive cranes, including battery pack, can be seen in the outdoor area FN 619.

The DACH region is considered one of the biggest challenges for the industry in the European market. One of the reasons for this is that customers are used to high quality standards, both in terms of machines and service. Lengthy approval procedures are another complicating factor. SANY Europe offers a range of cranes and solutions specially customised for this market.

As part of the SANY Group, one of the company's key objectives is to achieve CO₂ neutrality, particularly through electrification - especially in the field of crane technology. For this reason, SANY Europe will be presenting two cranes with conventional drives at bauma 2025 as well as a fully electric crane and a powerful mobile charging station that has been specially developed to supply SANY machines with energy. The biggest advantage: Even if the infrastructure is insufficient, there is enough power available for every job

The powerful and efficient SAC1200E all-terrain crane

What will be on show at bauma in April is a further development of the mobile, versatile crane with a lifting capacity of 120 tonnes, which now meets the needs of European customers even more precisely. The cab has been designed to be more comfortable and ergonomic in order to offer drivers a more pleasant working environment. The automatic ballast set-up and the sophisticated radio remote control also offer comfort and efficiency. The ballast detection system contributes to greater safety during operation. A twin-engine system noticeably reduces fuel consumption. The variable, space-saving stabiliser enables an optimum working area even in very confined installation conditions.

The powerful crane has a lifting capacity of 120 tonnes, a maximum jib length of 66 metres and a lifting height of 91 metres.

The versatile and mobile SRE450N rough terrain crane

The rough terrain crane is ideal for large-scale construction sites thanks to its manoeuvrability, speed and ability to move with a load on the hook. With its transport width of less than 2.55 metres, it is ideally suited to the transport requirements in Europe. SANY has also optimised the cab of this crane, adapting it to the needs of European drivers. A radio remote control comes as standard, ensuring efficient and safe working during a long working day.

The compact crane offers a maximum lifting capacity of 45 tonnes, a maximum jib length of 37.4 metres and 48 metres with jib extension.

100 % electric, energy-saving and quiet - the SCC2000A-EV crawler crane



This crane is a pleasure to work with - whether in city centres or other sensitive areas. It runs quietly, emission-free and can run continuously for up to 8 hours on a full charge. It can be charged both with a standard connection from 10 kW and with a quick-charging connection.

The environmentally friendly lattice boom crawler crane offers a maximum load capacity of 200 tonnes and a maximum system length of 119 metres in various versions.

Battery power pack for electric machines - the SPL210



The SPL210 battery pack is the perfect solution for reliably providing energy for large-scale operations - regardless of the infrastructure on site: With the 210 kWh CATL high-security lithium iron phosphate battery, it provides enough power and endurance for autonomous work without any other external energy sources - emission-free and therefore compliant with local emissions regulations. The SPL210 is compatible with a wide range of construction machines and can therefore be used in a variety of ways, for example for SANY cranes, excavators and many more.

SANY cranes specially designed for the requirements in the DACH region

In line with the company's claim to offer the highest quality at an attractive price-performance ratio, the aim is to fulfil the requirements of customers in Germany, Austria and Switzerland in particular. SANY emphasises its commitment to the DACH region with a close-knit sales network and first-class support. "Our aim is to impress customers not only with innovative machines, but also with partnership-based support - from consulting to maintenance," emphasises Christian Strasser, Head of Sales DACH at SANY.

The Bedburg site serves as the central interface for all operational activities. This ensures efficient handling of all business processes - and guarantees customers rapid availability of the desired cranes.

About SANY

SANY Europe is a company of SANY Heavy Industry from Changsha. This is one of the three largest manufacturers of construction machinery in the world, with a turnover - the SANY Group - of around 17.9 billion euros in 2024. Founded in 1989, the company offers a broad product portfolio with over 18 product families and more than 500 machine models. This is developed, realised and sold by almost 60,000 employees worldwide.

SANY's European site is in Bedburg, near Cologne, since 2011. The site employs staff in Sales, Service and in adapting products for the European market. SANY Europe's portfolio focuses predominantly on excavators, port-machinery, cranes and road-machinery. The SANY site, measuring approximately 14 hectares, provides space for a production hall and warehouse. Proprietary painting facilities, as well as an administration building and the SANY Hotel are also located on the premises.

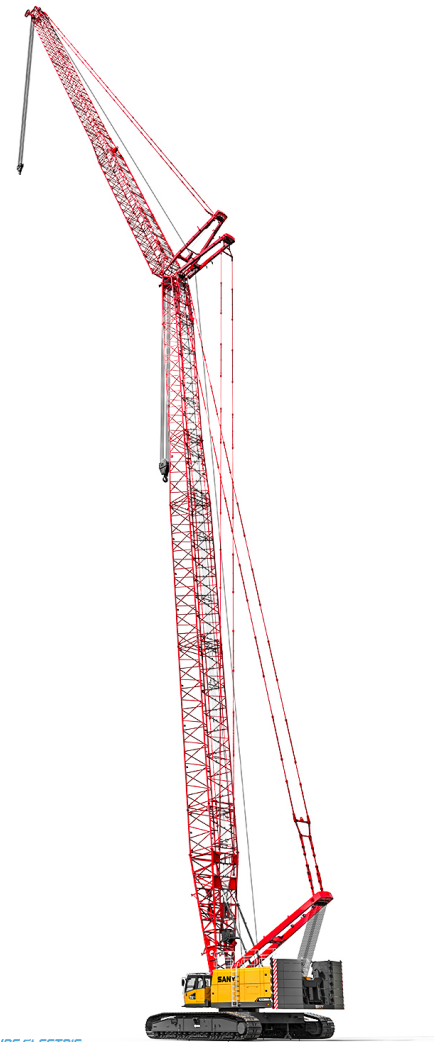
The internationally recognised brand Putzmeister, based in Aichtal near Stuttgart is also a company of SANY Heavy Industry.



The SANY **SAC1200E** all-terrain crane



The SANY **SRE450N** rough terrain crane



The SANY **SCC2000A-EV** crawler crane